

June 15, 2026

Title I Part C Education Program



MISSION - To help children and youth meet high academic challenges

In the field



It's National Zoo and Aquarium Month!

Through Museums for All, those receiving food assistance (SNAP benefits) can gain free or reduced admission to more than 1,600 museums throughout the United States by presenting their EBT card and photo ID.

Visit the website [HERE](#) to learn the details and locations of participating zoos, aquariums, and other museums. If you can't make it in person, there are dozens of virtual zoos to visit. To add to the fun, find free bilingual zoo printables and activities [HERE!](#)



Focus on Trauma

Many students face various mental health challenges. Our migratory students often face unique challenges due to cultural adjustment, language barriers, and possible exposure to traumatic events. These circumstances often translate to struggles in the classroom. Many migratory children also experience trauma, which can lead to anxiety, depression, difficulty concentrating, and behavioral challenges that affect learning. The National Child Traumatic Stress Network is an excellent resource that emphasizes trauma-informed practices. Resources are available in multiple languages and can help educators recognize and respond to these challenges.

There are also many valuable state resources available for educators supporting these students. The Texas Education Agency (TEA) recently released an updated Texas Statewide Plan for Student Mental Health. Guidance encourages schools to create safe and supportive environments and highlights the importance of supporting these students through school-based mental health services. These services may include expanding counseling services, training teachers to recognize mental health concerns, and promoting culturally responsive care. Schools are also encouraged to partner with families and communities to ensure students receive appropriate support.

By using trauma-informed strategies and increasing access to mental health resources, schools can help migratory students build resilience, improve emotional well-being, and succeed academically.



Summer presents unique opportunities to connect with students in different settings.

Consider:

Offering flexible scheduling to meet students' work demands

Providing services in community locations or worksites

Using practical, real-life lessons such as workplace English, budgeting, and daily communication skills

Even short, consistent interactions can have a lasting impact. This time of year can be demanding for both students and staff. It's important to remain mindful of mental health and well-being.



For Students:

- Check in regularly and create a safe space for conversation
- Be aware of signs of stress, fatigue, or isolation
- Encourage balance between work, rest, and learning

For Staff:

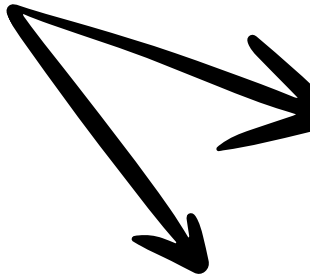
- Take short breaks when possible
- Stay connected with colleagues for support
- Set realistic expectations during busy periods

Staff Self-Care Corner

- Take a few minutes each day to reset and recharge
- Stay hydrated and prioritize rest
- Celebrate small wins—your work matters

*From the
office of
Isaura*

QUALIFYING ARRIVAL DATE VS RESIDENCY DATE



- **Remember**
- The term "residency date" refers to the specific date on which a child legally establishes residency in a particular place/school district. So- when did they move into their current school district?

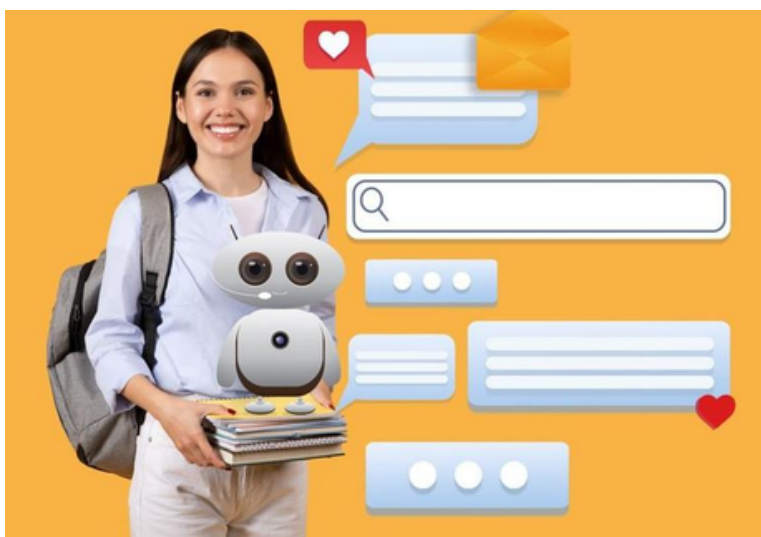


REMEMBER



- To determine the Qualifying Arrival Date, ask yourself when the child or youth last moved across school district lines due to economic necessity with or to join/precede a MAW for an agriculture or non-ag job. This movement must have occurred within 36 months of when the MAW was established.

Join the July Monthly Webinar on July 7th at 8 PST, 9 MST, 10 CST, 11 EST. During this webinar, we will be sharing examples of helpful AI tools that can be used to enhance efforts in marketing, organization, communication, and services for the families and youth enrolled in the Title 1, Part C Program. Many of these tools will be free.



July Monthly
Webinar: AI tools
for MEP Staff
Tue Jul 7th
10:00am - 11:00am

REGISTER HERE



2026 FAMILY & STUDENT CONFERENCE



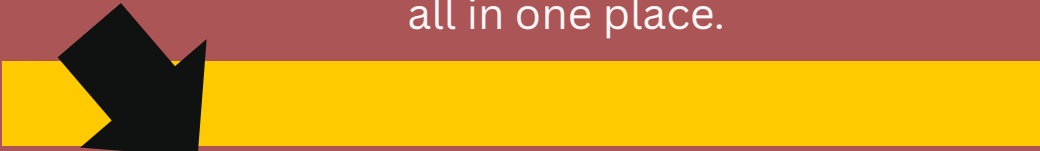
Saturday, July 11, 2026 | Lexington, Nebraska
9:00 AM – 3:30 PM

A statewide celebration for families, students, and community.



- High School Leadership Camp (Grades 9-12)
- Middle School Art & Creativity Camp (Grades 6-8)
- Elementary Adventure Camp (3 yrs to 5 grade)
- Parent Wellness & Mental Health Retreat
- Five scholarships will be awarded to students
- Community vendors

Learning, connection, celebration, and community all in one place.



Please register your family using the link below. Registration closes on June 19, so please make sure to register your families so they can participate in this great opportunity.

👉 Registration link: <https://bit.ly/4uiBYSI>



- Student camps by age group
- Parent sessions
- Meals included
- Safe, supervised activities



Lexington Middle School
1100 N Washington St, Lexington, NE 68850

