



AI Briefing Part 1

Developed by Chris Wlaschin, NDE Information Systems Officer
and the AI@NDE (Andy) team

May 5, 2026

Agenda

1. State of Nebraska Approach
2. NDE Approach
3. Survey Results
4. NDE Draft Policy
5. Closing/Questions

State of Nebraska (SoN) Approach to AI

Nebraska's AI Policy and Regulatory Landscape -

Nebraska has developed a **multi-layered approach** to artificial intelligence, combining state agency guidelines, emerging legislation, and alignment with federal frameworks.

State Agency AI Policy

- The **Nebraska Information Technology Council (NITC)** issued an **Artificial Intelligence Policy** in November 2024 that sets standards for public agency use of AI [Nebraska Information Technology Commission](#). Key points include:
- **Security and compliance:** AI must be securely developed, assessed for bias and risk, and reviewed periodically to ensure safety, integrity, and compliance with laws and best practices.

SoN Approach to AI 2

Legislative Developments - Two major AI-related bills passed in 2025:

- **LB642 – Artificial Intelligence Consumer Protection Act:**
- **Child pornography ban (LB383) and civil liability for AI-generated intimate images**
- Three major AI-related bills introduced in 2026:
- **LB 1083** focuses on the mental health of children by establishing the Transparency in Artificial Intelligence Risk Management Act.
- **LB 1185** would establish the Conversational Artificial Intelligence Safety Act.
- **LR 421** Interim study to examine the current status of artificial intelligence legislation occurring at the state and federal levels.

SoN Approach to AI 3

Federal Executive Order Impact

- In July 2025, President Trump signed an executive order urging states to stop regulating AI and favor a federal framework. In March 2026 the Administration issued policy guidance to help accomplish the EO.

Nebraska Governor's Statement on AI Executive Order

- Nebraska Governor Jim Pillen has said that the recent Trump administration AI executive order — which aims to limit state regulation of artificial intelligence and promote a federal framework — does not appear to be as sweeping or disruptive as some had feared.

SoN Approach to AI 4

Practical Implications

- Treat AI systems as **regulated operational tools** with governance, transparency, and security controls.
- Ensure **human review** of AI-generated marketing and customer content.
- Comply with **consumer protection, privacy, and employment laws** when deploying AI.
- Document AI use and approval workflows to meet compliance and liability standards.

In summary: Nebraska's AI policy blends agency-specific standards, targeted legislation, and alignment with federal trends. Businesses should integrate AI governance into existing compliance frameworks to avoid legal and reputational risks.

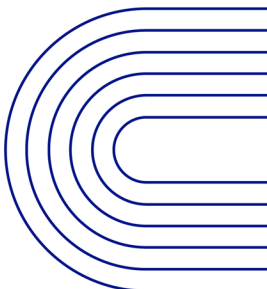
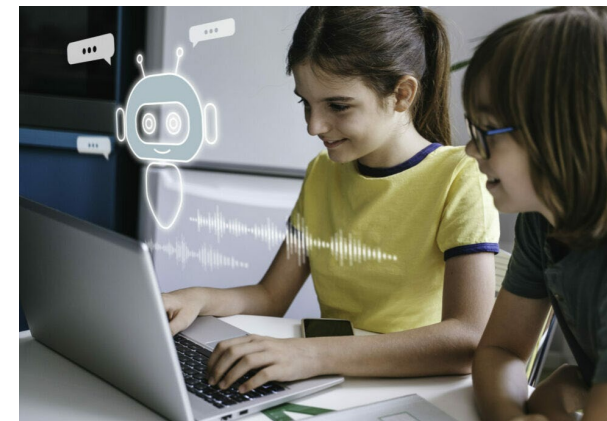
NDE Approach

The Role of AI in Streamlining Educational Administration

We are here



- **Research** what other states are doing; collect policies, best practices, risk and guardrail language
- **Separate** and define NDE approach for administration vs. ESU, districts and school approach for classrooms
- **Survey NDE** staff on AI literacy, tools already in-use and concerns
- **Define** use cases, data governance and security controls
- **Develop** policy guidance



Research - What are other states doing?

Part 2. 9-State Crosswalk of Core K-12 AI Governance Dimensions

Legend

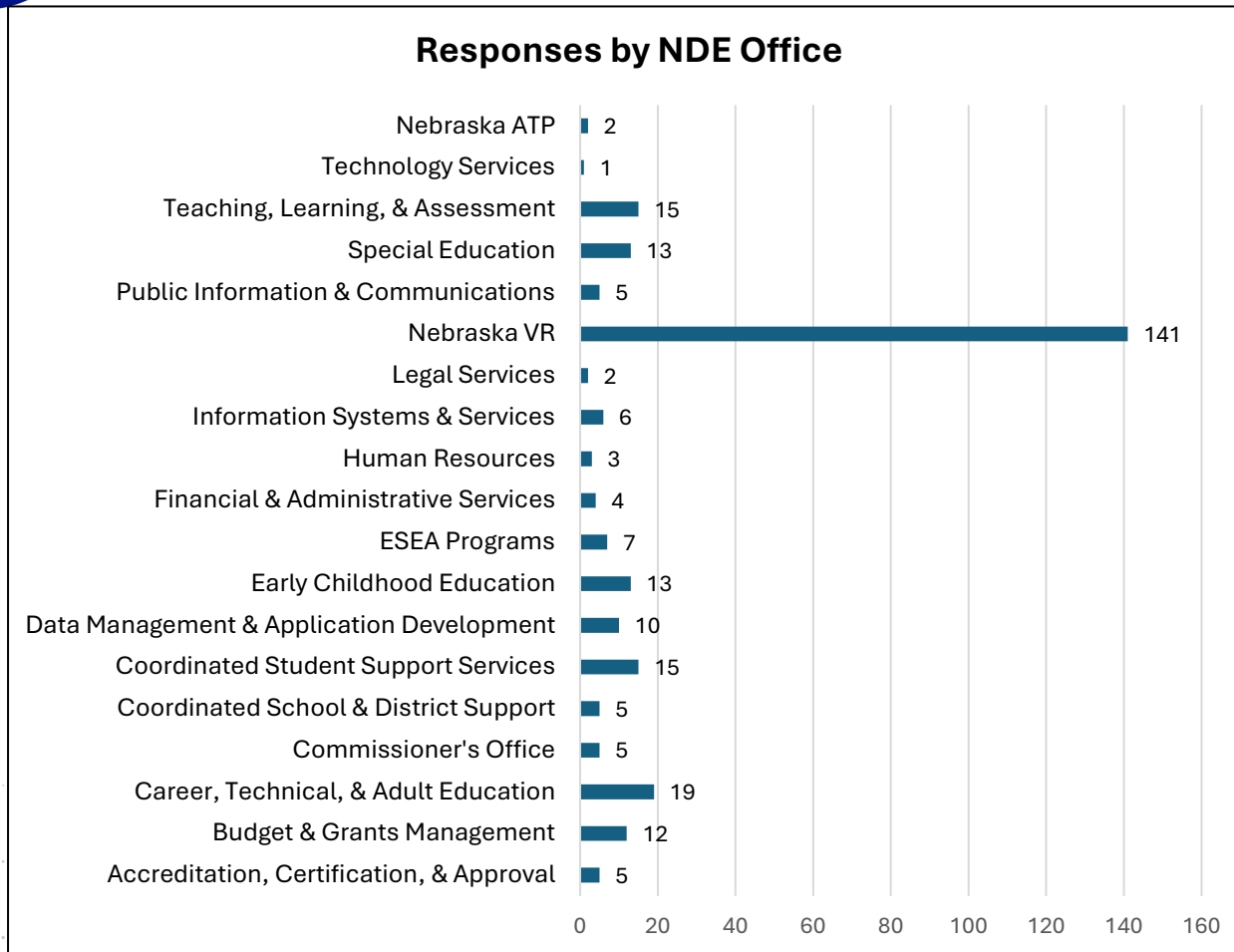
✓ = Explicitly addressed

◐ = Partially addressed / implied

— = Not addressed at state level

AI Governance Dimension	GA	MS	NJ	NE	SD	IA	KS	WY	CO
Statewide DOE AI Guidance Issued	✓	✓	✓	—	—	—	◐	✓	✓
District AI Policy Encouraged	✓	✓	✓	◐	✓	✓	✓	✓	✓
Human-in-the-Loop Requirement	✓	✓	◐	◐	—	✓	✓	✓	✓
High-Stakes AI Use Restricted	✓	✓	—	—	—	✓	◐	✓	✓
Student Data Privacy (FERPA/COPPA)	✓	✓	✓	✓	◐	✓	✓	✓	✓
Vendor Vetting / Procurement Controls	✓	✓	◐	✓	—	✓	◐	✓	◐
Academic Integrity / Cheating Guidance	✓	✓	◐	—	✓	✓	◐	✓	✓
AI Literacy (Students)	✓	◐	✓	—	—	◐	✓	✓	✓
Professional Learning (Educators)	✓	✓	✓	—	—	✓	✓	✓	✓
Equity & Accessibility Considerations	✓	✓	◐	✓	—	◐	✓	✓	✓
Continuous Review / Living Policy	✓	✓	✓	✓	◐	✓	✓	✓	✓

NDE AI Survey – Response rate



- **Total Number of Responses: 283**
- **Total Sample Size: 513**
- **Response rate (completed surveys): 55.2%**
 - **NDE employees: 47.3%** (142 responses out of 300 in the email list)
 - **Nebraska VR Employees: 66.2%** (141 responses out of 213 in the email list)

AI Survey – Use Cases

- The most common AI use cases mentioned in the open-ended responses included the following types:
 - **Communication Support:** Drafting emails, summarizing meetings, creating reports and content.
 - **Data Analysis & Reporting:** Automating spreadsheets, generating insights, supporting budget projections.
 - **Administrative Efficiency:** Scheduling, task tracking, reminders, form completion.
 - **Accessibility & Transcription:** Speech-to-text tools, WCAG compliance, assistive tech for clients.
 - **Instructional Design:** Creating training materials, lesson plans, and educational content.
 - **Student/Client Services:** Case notes, personalized outreach, appointment management.

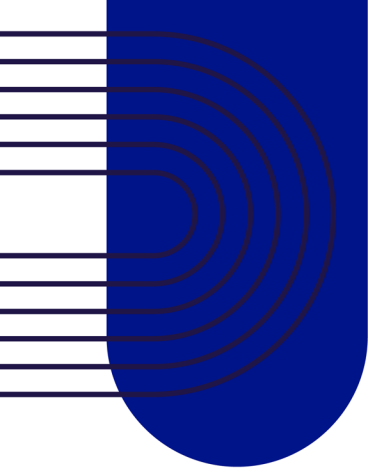
AI Tools?

- ChatGPT
- Gemini
- Claude
- CoPilot
- Grok AI
- Watson
- Apple Siri
- Google Assistant
- Amazon Alexa
- ElevenLabs
- OpenAI Sora
- Grammarly
- Sudowrite
- Adobe Photoshop
- Canva
- Runway
- Jasper
- Fireflies
- Midjourney
- Speechify
- Perplexity
- Blush
- AlphaGo
- Tesla Autopilot

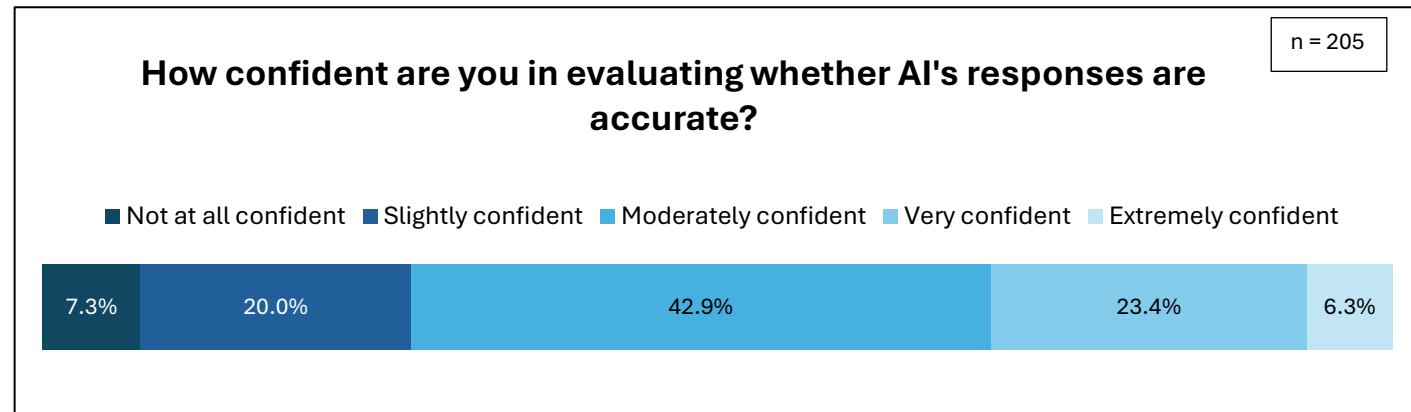
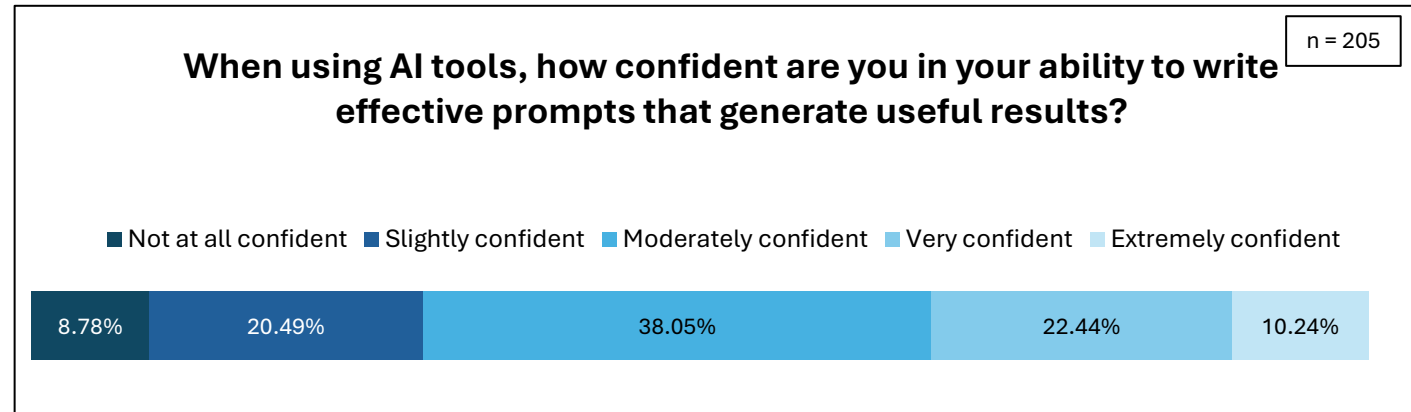
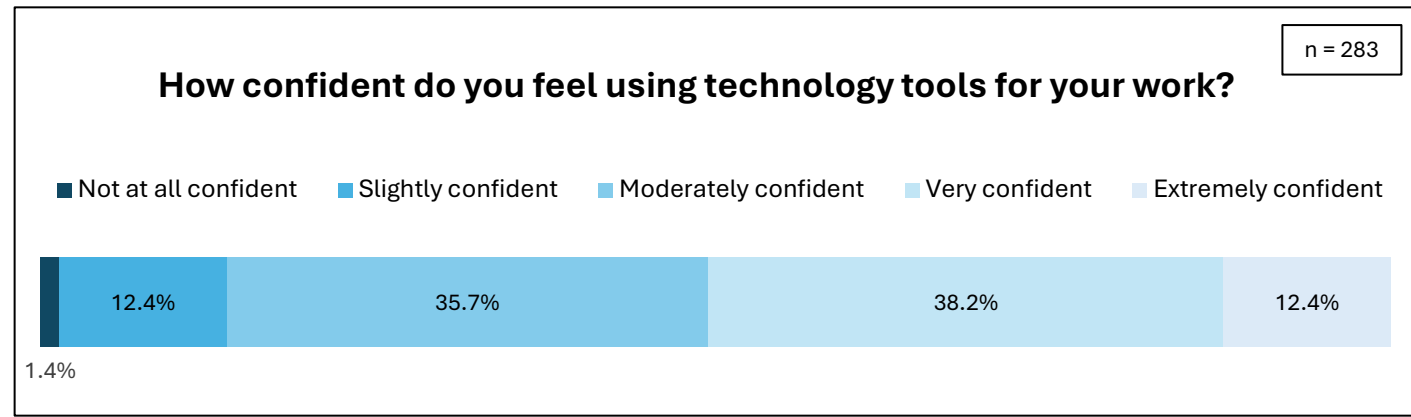
AI Survey – Additional Training

- ***Would additional training in any of these tools make your work easier? Please be specific and list any tools/tasks you would want additional training on.***

Category	Approximate Mentions	Example Tools/Topics
AI Tools & Literacy	~90	ChatGPT, Copilot, Gemini
File Storage & Management	~50	SharePoint, OneDrive, O:Drive
Project Management & Workflow	~45	Planner, Smartsheet, Jira, Power Automate
Dictation & Transcription	~30	Otter.ai, Dictate, Fireflies.ai
Data Analysis & Visualization	~25	Excel, Power BI, Tableau
Survey & Feedback Tools	~15	QuestionPro, Google/Microsoft Forms
Accessibility & ADA Compliance	~10	WCAG, document accessibility



Staff Confidence in using AI

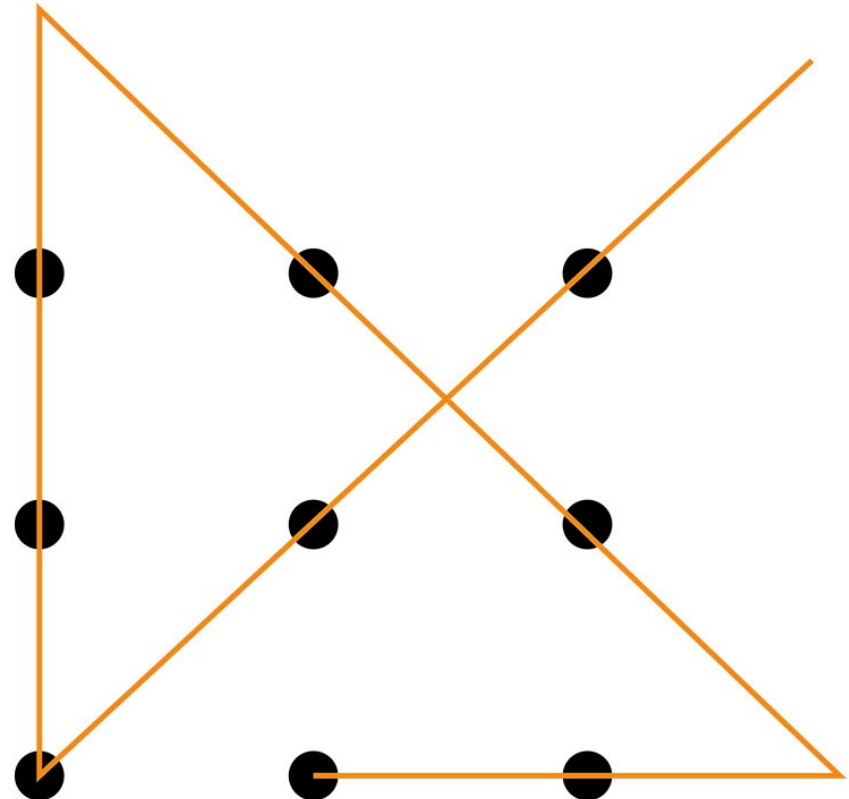




Next Steps: AI@NDE (Andy) Initiative

The AI@NDE (Andy) Initiative

- The Initiative provides:
 - Alignment NDE Strategic Plan value Excellence: evidence-based decisions
 - Forum for conversations
 - Risk management
 - Examine use parameters
- Develop use cases
- Pilot a few embedded tools and evaluate results





Andy Initiative: Conversation & Risk

- Internal
- External
 - Partners
 - Community
 - Classrooms & students
- Environmental
- Social
 - Echo chambers
- Cost \$
- Ethics
- Value
- Uncertainty



Next Steps: Policy Development Considerations

- AI literacy for staff
- Stakeholder input and engagement
- Data privacy and security
- Procurement and evaluation of tools
- Ethical uses
- Prohibited uses
- Academic integrity
- Implementation and review

Andy Initiative: Policy Development (in progress)

DRAFT

DR. BRIAN L. MAHER, COMMISSIONER



TEL 402.471.2295
FAX 402.471.0117



P.O. Box 94987
Lincoln, NE 68509-4987



education.ne.gov



AI Policy for the Nebraska Department of Education

- I. This policy is being provided to the Nebraska Department of Education staff to help with decision-making around the use of AI-powered systems and 3rd party services.
- II. Refer to the AI Glossary document for explanation of AI-related terms.
- III. Use of AI within the department must be done with regards to protection of student privacy and other sensitive information, and in accordance with FERPA, NE State Statute 87-808 - Disclosure of Computerized Data, and NDE AM 707 – Data Security



IV. PURPOSE STATEMENT

To support the Nebraska Department of Education (**Department**) in the use of artificial intelligence (AI) for operational purposes, the NDE staff has created this policy on the use of AI. The purpose of this policy is to prepare the Department for success, encourage innovation and embrace opportunities for operational efficiency, while providing for consistent expectations, standards, and approval processes for safe and responsible implementation and integration of AI. This applies to multiple use cases, applications, and integration of AI, including generative AI.

V. DEFINITIONS

- **Artificial intelligence (AI):** A machine-based system that can, for a given set of human-defined objectives, make predictions, recommendations, or decisions

NDE AI Guidance Policy

- Do's 
 - Generate ideas, proof/edit non-sensitive information
 - Supervised AI use
 - Non-sensitive information use with translation, text-to-speech or vice versa
- Don'ts 
 - NO sensitive, proprietary, personally identifiable information sharing or access with AI systems
 - No unsupervised AI
 - No connections with Google drive, OneDrive, SharePoint
 - **3rd party meeting assistants**



AI GUIDANCE FOR NDE STAFF

This guidance is being provided to the Nebraska Department of Education staff to help with decision-making around the use of AI-powered systems and 3rd party services.

Refer to the AI Glossary document for explanation of AI-related terms.

Use of AI within the department must be done with regards to protection of student privacy and other sensitive information, and in accordance with FERPA, NE State Statute 87-808 - Disclosure of Computerized Data, and NDE AM 707 – Data Security.

Many commercially available AI powered systems retain the information supplied to them (e.g., documents, prompts, or meeting conversations/recordings) for subsequent training of AI models. This exposes potentially private or sensitive information to external entities and can result in a direct violation of the statute and AM referenced above.

GENERAL GUIDELINES/REQUIREMENTS

- View all interactions with AI systems, or other 3rd party services through the "Protecting Private and Sensitive Information" lenses.
- If the information should not be on a public website, it should not be shared with an AI system.

DO'S

- It is permissible to use AI systems for generating ideas, proofing/editing non-sensitive information.
- It is permissible to use AI for supervised (i.e., human-verified) troubleshooting and software development.
- It is permissible to use AI systems for human-verified translation, text to speech, or speech to text purposes, provided no private or sensitive information is used.

DONT'S

- Do not copy/paste or otherwise upload sensitive, proprietary, or personally identifiable information into AI systems or 3rd party services.
- Do not expect that AI generated material is accurate.
- Do not use AI systems as decision-makers.
- Do not connect AI or other 3rd party services to online storage accounts such as Google Drive, One Drive, or SharePoint.
- Meeting Assistants:
 - Due to the potential of leaking sensitive information, it is not permissible for NDE staff or contractors to use 3rd party meeting assistants (e.g., OtterAI) or to disclose private or sensitive information in meetings where such 3rd party assistants are present.
 - Staff can attend meetings where such assistants are present (for example, if invited by external participants) but should not disclose any private or sensitive information, and should not sign up for such services/assistants in order to view meeting notes.

REFERENCES

- See the AI Glossary document.

For questions/clarifications/exceptions, please send an email to nde.techserviceshelp@nebraska.gov, with subject "AI Guidance".

Summary



Questions?

Thank you