



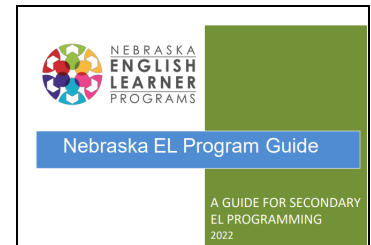
English/Multilingual Learners Newsletter October 2025

Language Instruction Educational Programs (LIEPs)

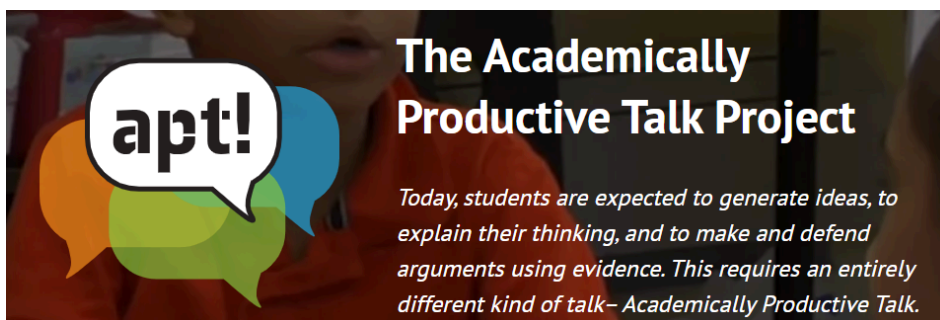
[Nebraska Rule 15](#) section 004 provides guidance for districts to provide instructional programs that assist English learners in acquisition of English and academic content. This program must be:

- A systematic approach to teaching English
- Educationally sound in theory and effective in practice as recognized by experts in the field of language acquisition
- Designed to help English learners increase English proficiency and meet academic standards
- Designed to allow for meaningful access to programs and activities that are available to all students including, if appropriate, special education

There are many models for LIEPs and districts can determine the best option/options based on the needs of their students, as well as their resources. A few [LIEP models](#) include Newcomer, ELD (English language development) or EL (English learner) designated, Sheltered English, Content with Integrated Language Support, Dual Language, or Transitional Bilingual. In addition to the types of programs, there are a number of [frameworks](#) with components essential for language acquisition. SIOP, SDAI, PLUSS Model, and Academic Language all provide educators with best practices for meeting the needs of English learners. Our [Rule 15 Implementation Guide](#) (pg 36) provides a number of quality indicators for school, curricula, and instruction. More information and resources such as EL program guides can be found on the [NDE EL Website](#) for LIEPs.



For any LIEP, the [ELP Standards](#) or [Alt ELP Standards](#) guide instruction and are measured through the [State ELPA21 Summative \(or Alt ELPA Assessment\)](#). The [Alignment of ELP Standards and Content Area Standards and Practices](#) and the [Alt ELP Standards and Extended Indicators](#) are two documents that support all teachers.



It is helpful to have quality resources and materials that support language acquisition and academic content. A new resource through [SERP](#) is [Academically Productive Talk](#). Some features in APT include students explaining what they are thinking, relating their own ideas to what they are learning, reacting to other student's ideas, reasoning together, and presenting ideas

and interacting with others. This resource can support the [ELP standards](#) in any setting. This resource can support all teachers with strategies to improve academic language use for ALL students.



Spotlight: Dan Moran, Dual Language Program in Fremont

Fremont Public Schools' Dual Language program was founded by Dan Moran in 2015. The program is growing with the first group, and currently spans from grades kindergarten through tenth grade. The dual language program is offered at Washington Elementary, Johnson Crossing Academic Center, and Fremont Middle School. In addition to bilingual learning opportunities, students in kindergarten participate in lessons and activities in K'iche' Maya. Students in third grade work each month to make the public library's information available in Spanish. At the middle school level, students have the opportunity to take two one-of-a-kind courses that allow them to maintain and acquire new language while experiencing relevance through projects like community translations, a quarter-long unit that has led to the translation of school content, city information, restaurant menus, and even the creation and translation of a first ever *Summer Park Packet* that was made available to all children by the city's department of Parks and Recreation. Dan shared a [few pictures](#) of the Dual Language program.

Connections with World Languages: NDE World Languages offers a [Guest Speaker Series](#) designed to support ALL teachers. This year's theme is "Designing Engaging Language Learning".



In addition, Nebraska offers the [Seal of Biliteracy](#) that recognizes and honors students who meet proficiency in two or more languages. Nebraska offers lots of resources including toolkits for students, teachers, and families. Check out the [2025 Award winners](#). Title III funds can be used to cover the cost of the assessment. To learn more about Competency Based Credit, check out a [sample policy](#).

Guidance: Title I Accountability Indicators - important to have quality programming for ELs

- 1111(c)(4)(B)(i) Academic Achievement
- 1111(c)(4)(B)(ii) Academic Growth, optional for high school
- 1111(c)(4)(B)(iii) Graduation Rates, doesn't apply to some schools
- 1111(C)(4)(B)(iv) ELs Progress toward English Proficiency**
- 1111(c)(4)(B)(v) School Quality or Student Success indicator

Additional Resources:

- Check out the [ELPA21 Workshops for Educators](#) in Nebraska - free for the first 10 spots! Oct. 8, 14, and 16th!
- [ACT Webinar pdf for Accommodations and English Learner Supports](#) (NDE ACT Website)
- [Pathwise](#) (formerly TransACT ParentNotices) There are documents to support all areas of education. NDE provides the subscription and anyone can [self-onboard](#). [Log in here](#).
- OPS ML Fall Conference, Saturday, November 8, 2025.
- [Storyworld](#) is a literacy resource that is complementary for all educators through October 31. Check out the most recent [blog](#).
- [Unite for Literacy](#) - free online books with multiple languages translated. Learn more about the Growing Readers Project with [Unite for Literacy](#) and [Nebraska Statewide Family Engagement Center](#) (September 9, 2025 Presentation)
- PD at ESU 3: [PLUSS Model](#) (10-30-25) and [Science of Reading for Multilingual Learners](#) (11-12-25) zoom options!
- [EL Teacher Checklist and Timeline](#) (helpful for those new to EL!)

The poster for the 2025 Fall NDE World Language Education, NLA, & CLTA SIG K12 Guest Speaker Series features a grid of speaker portraits and session details. The speakers include Dr. Debra Cigedy, Dr. Christopher Davis, Dr. Amanda Boudin, Dr. Cheryl Lee, Dr. Sarah Hines, Dr. Christopher Davis, Dr. Nick Ziegler, and Dr. Sergio Perez. The sessions are titled "Designing Engaged Language Learning" and "Unite for Literacy". The poster also includes QR codes for the 2024 Spring, 2024 Fall, 2025 Spring, and Our Channel.

Questions: Please contact us with any questions or concerns regarding your EL/ML students or program.

Julie Otero - julie.otero@nebraska.gov 402-405-5212 Anne Hubbell - anne.hubbell@nebraska.gov 402 405-7017