



# Welcome

## Federal Programs February Office Hours

Please put your name and district in the chat.

This presentation will be posted on our website.

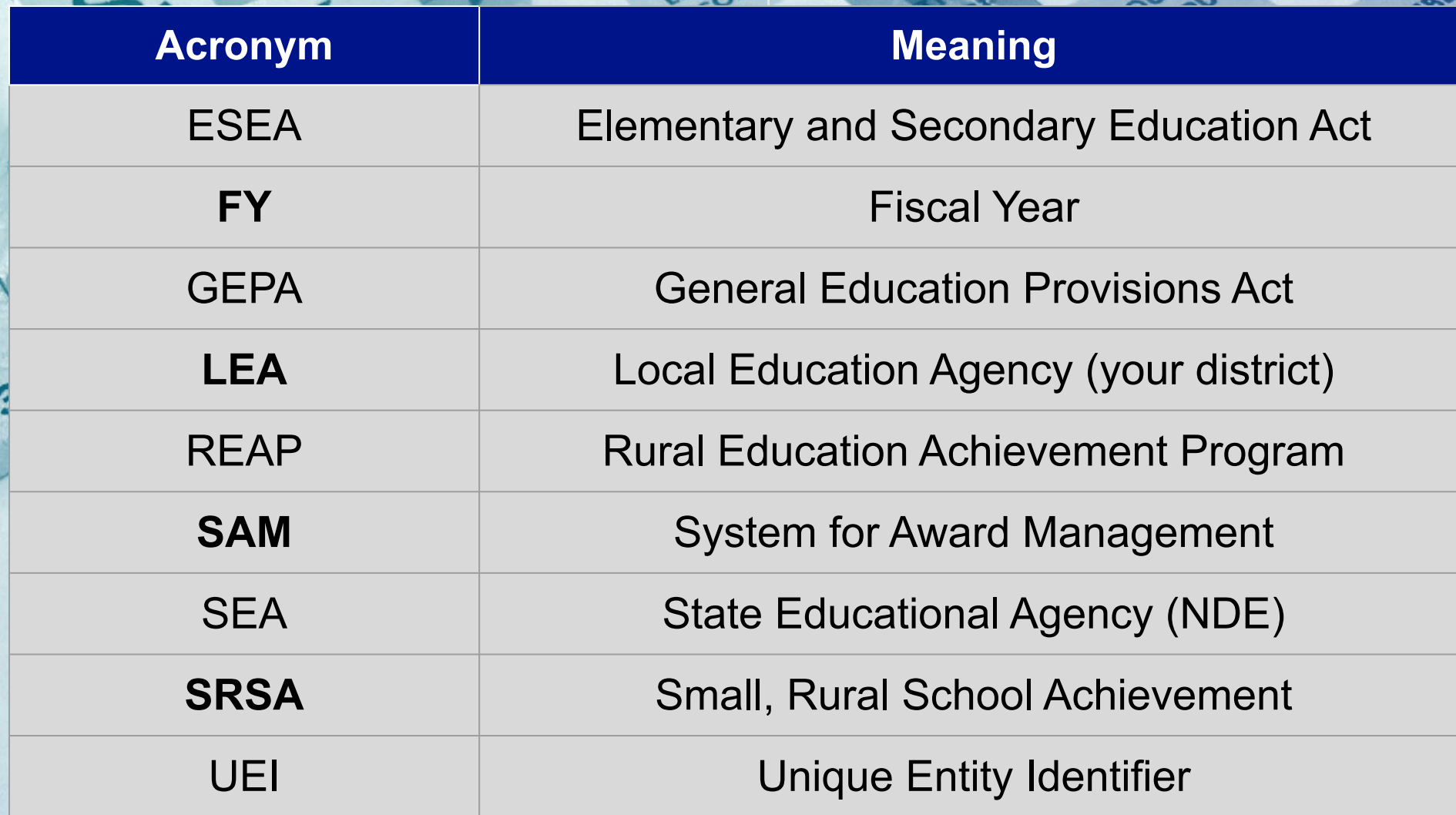
# Meet Our Team

- Beth Wooster - Office Administrator
- Dottie Heusman - Title I Director & Assistant Administrator
- Ann Carmoney - REAP/RLIS State Coordinator
- Anne Hubbell - Title III & ESU 4, ESU 6 and ESU 17
- Janice Paling - Reimbursement Expert
- Julie Otero - Title III Director - ESU 7 & ESU 13
- Michelle Rezek - School Improvement - ESU 1, ESU 5 and ESU 8
- Tate Toedman - Title IV & Non Public Expert - ESU 2, ESU 9, ESU 11 & ESU 15
- Rhonda Wredt - Office Associate
- Benjamin Zink - Migrant



# Agenda

- Go Over REAP Terms & Timelines
- Understand the difference between REAP and RLIS
- Accessing the REAP grant & allowable uses
- Accessing the REAP website & resources



<b>Acronym</b>	<b>Meaning</b>
ESEA	Elementary and Secondary Education Act
<b>FY</b>	Fiscal Year
GEPA	General Education Provisions Act
<b>LEA</b>	Local Education Agency (your district)
REAP	Rural Education Achievement Program
<b>SAM</b>	System for Award Management
SEA	State Educational Agency (NDE)
<b>SRSA</b>	Small, Rural School Achievement
UEI	Unique Entity Identifier

# Commonly Used Acronyms



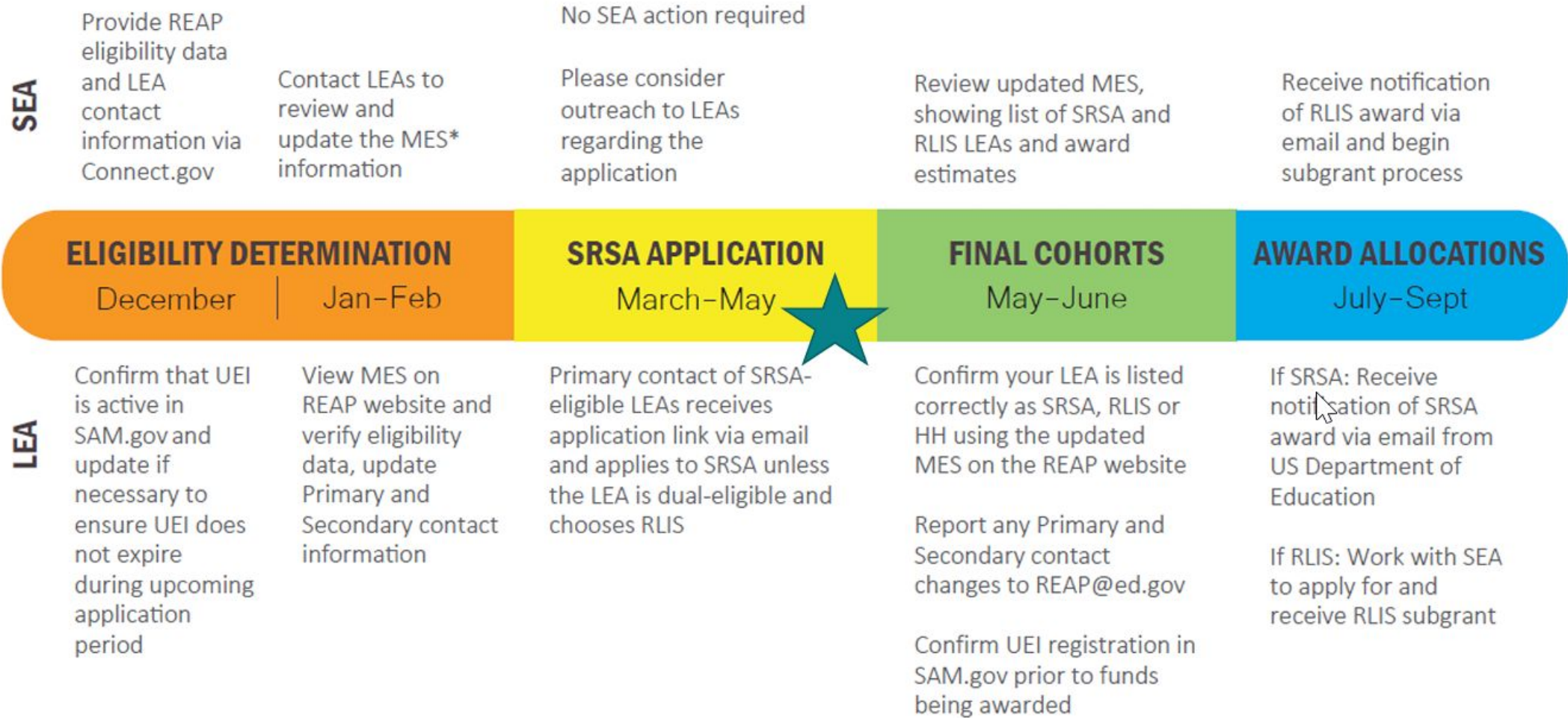
# What is REAP?

---

- The **Rural Education Achievement Program (REAP, or Title V, Part B)** is a grant program designed to address the unique needs of rural school districts that may lack the personnel and resources to compete effectively for Federal competitive grants and that often receive grant allocations in amounts that are too small to be effective in meeting their intended purposes.
- REAP consists of two formula grant programs:
  - **Small, Rural School Achievement (SRSA):** Department makes grants directly to local educational agencies (LEAs).
  - **Rural and Low-Income School (RLIS):** Department makes grants to State educational agencies (SEAs); SEAs administer subgrants to LEAs.

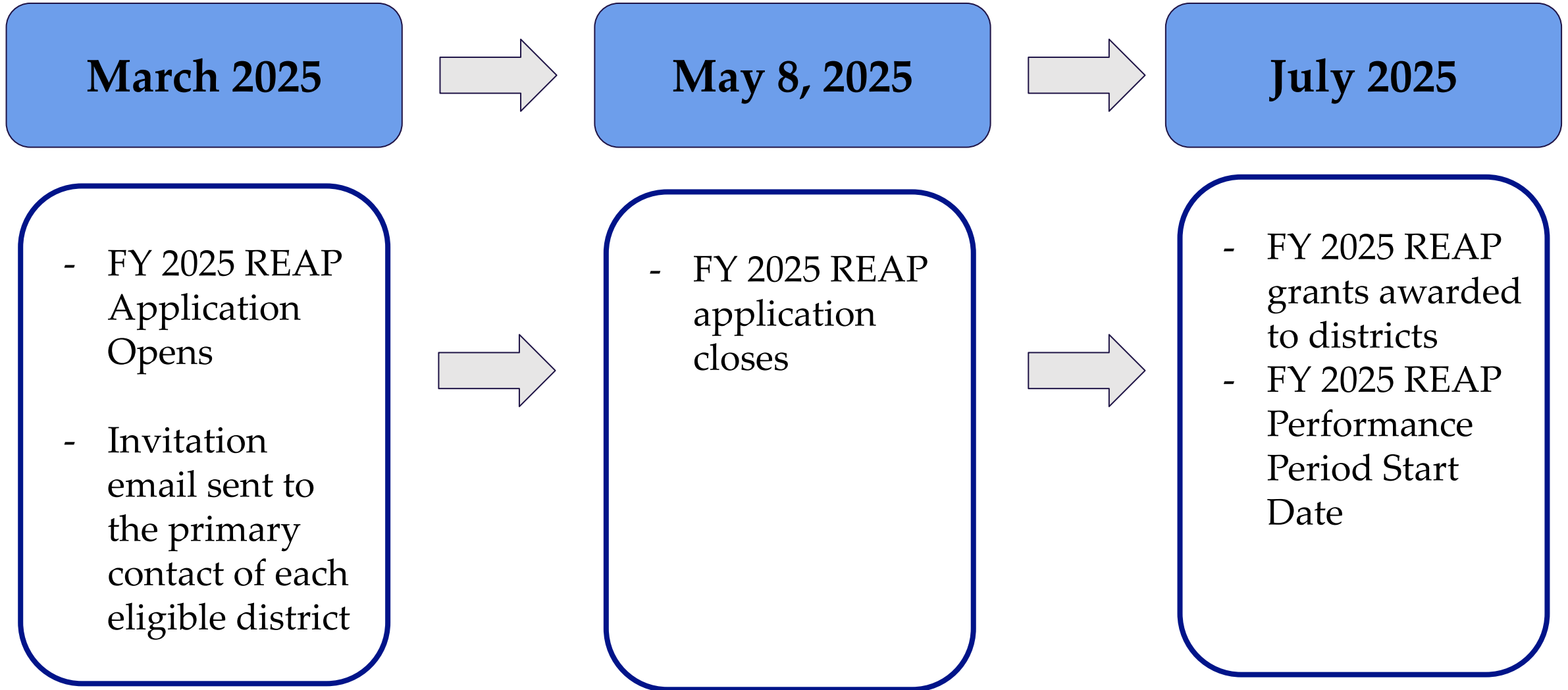


# FY 2025 Timeline



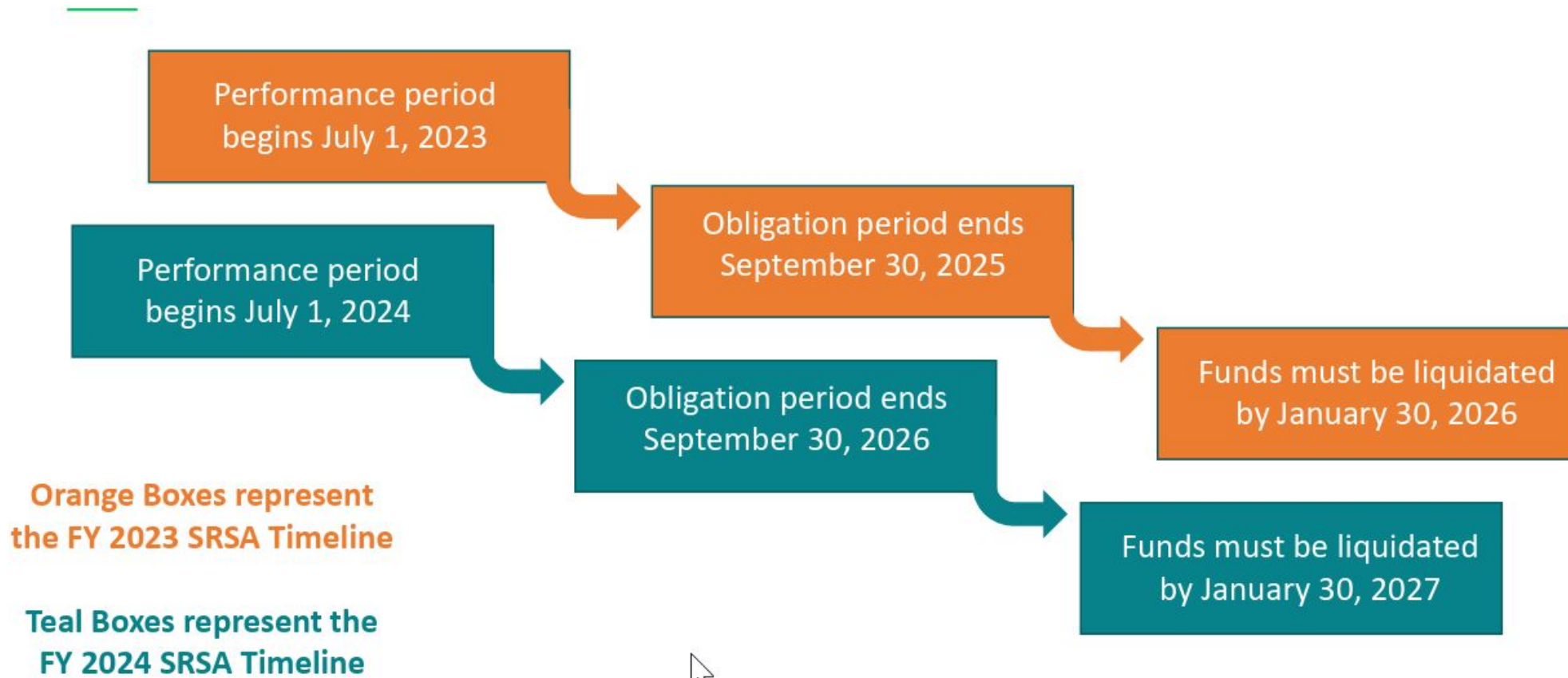
\*Master Eligibility Spreadsheet (MES)

# FY 2025 REAP Timeline



# Past Years Time Lines

## 27-Month REAP Grant Performance Periods





# SRSA Eligibility

To be eligible for an SRSA formula grant, a local educational agency (LEA) must be both **SMALL** and **RURAL** (see ESEA section 5211(b)).

## An LEA is considered **SMALL** if:

- The LEA's Average Daily Attendance (ADA) is fewer than 600 students
- OR
- The LEA is located in a county with a population density of less than 10 persons per square mile.

## An LEA is considered **RURAL** for if:

- All schools within the LEA have an NCES locale code of 41, 42, or 43.
- OR
- The LEA is designated as "rural" by a governmental agency of the State.

# RLIS Eligibility

To be eligible for an RLIS formula grant, a local educational agency (LEA) must be both **RURAL** and **LOW-INCOME** (see ESEA section 5211(b)).

## An LEA is considered RURAL for if:

- All schools within the LEA have an NCES locale code of 32, 33, 41, 42, or 43.

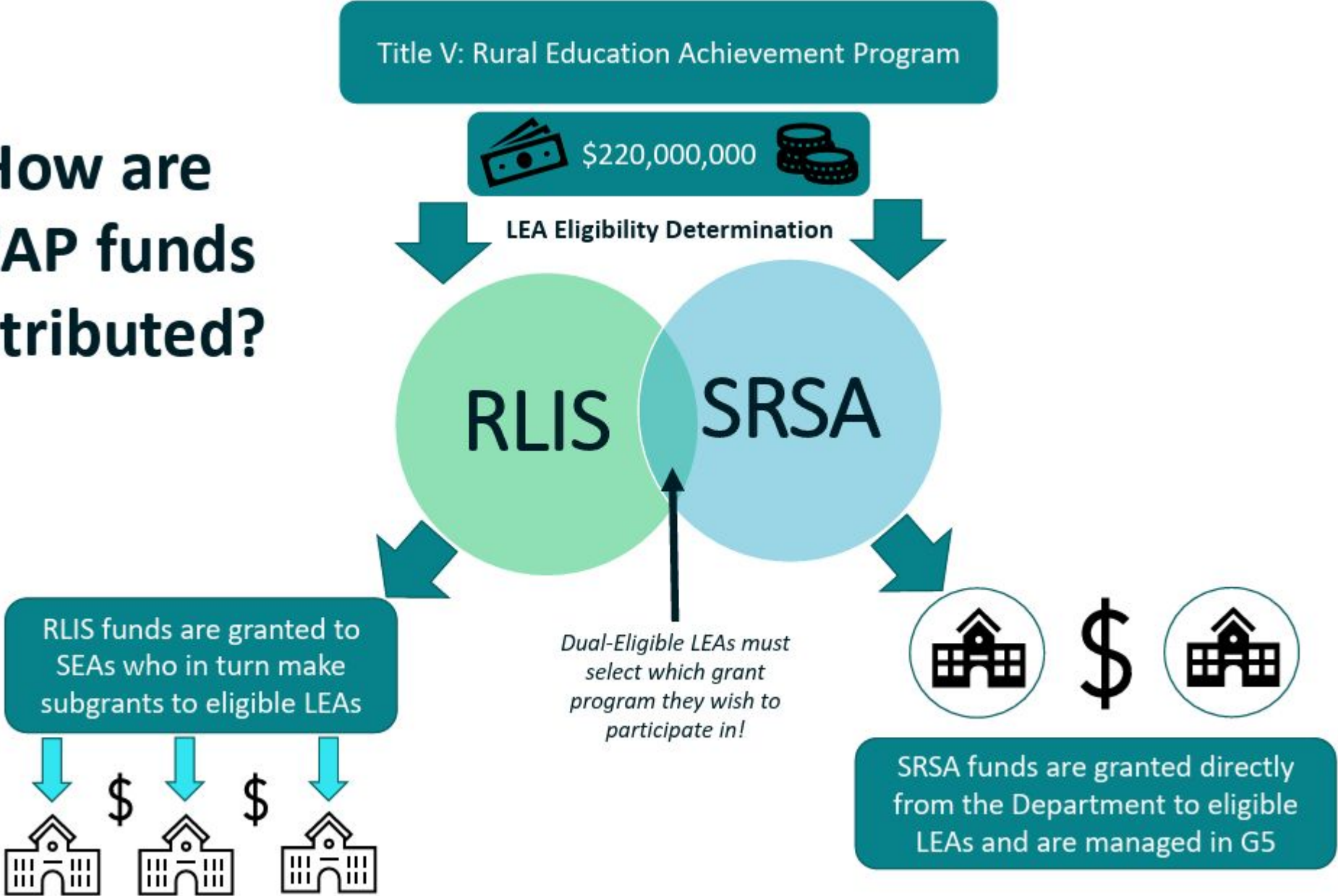
OR

- The LEA is designated as "rural" by a governmental agency of the State.

## An LEA is considered **LOW-INCOME** if:

20% or more of children aged 5-17 served by the LEA must be from families with incomes below the poverty line as determined by data from the Small Area Income Poverty Estimates of the Bureau of Census (SAIPE Data)

# How are REAP funds distributed?





# RLIS



- Many district “qualify” for RLIS, BUT get more money in REAP.
- Last year, there were 6 districts who got more funds in RLIS, than REAP.
- USED will reach out to you if you qualify and let you know which grant has a greater award.
- Any districts who take RLIS will be notified by NDE.
- The RLIS Grant goes through GMS.



# REAP Uses of Funds

REAP funds may be used to support activities authorized under any of the following ESEA programs:

## SRSA

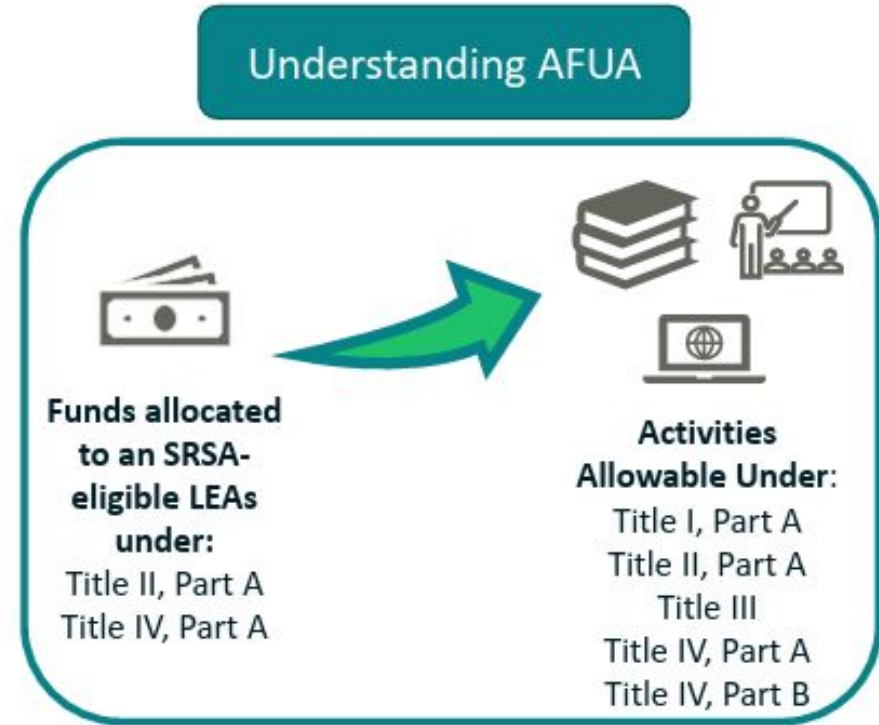
- **Title I, Part A** (Improving Basic Programs Operated by LEAs) activities
- **Title II, Part A** (Supporting Effective Instruction) activities
- **Title III** (Language Instruction for English Learners and Immigrant Students) activities
- **Title IV, Part A** (Student Support and Academic Enrichment Grants) activities
- **Title IV, Part B** (21<sup>st</sup> Century Community Learning Centers) activities

## RLIS

- **Title I, Part A** (Improving Basic Programs Operated by LEAs) activities
- **Title II, Part A** (Supporting Effective Instruction) activities
- **Title III** (Language Instruction for English Learners and Immigrant Students) activities
- **Title IV, Part A** (Student Support and Academic Enrichment Grants) activities
- **Parental Involvement** activities

# REAP Program Funding Flexibilities

- RLIS and SRSA funds can be used for activities that are allowable under multiple Title programs: Title I, Part A; Title II, Part A; Title III; Title IV, Part A; parental involvement activities (RLIS only); and Title IV, Part B (SRSA only).
- SRSA fund use can be changed any time during the performance period, as long as the activity is allowable under SRSA



# SRSA Application Overview

1



Email should come to you in April. It will come from the following email address:

[no-reply.survey@max.gov](mailto:no-reply.survey@max.gov)

2



## Complete the application

Applications take between 10-30 minutes

### Sections:

- LEA information confirmation
- GEPA statement
- Intended use of funds
- Assurances and signature
- Submission

3



## Post-award

Receive confirmation email. Review post-award information document.

Prepare for receiving funds by ensuring your UEI and G6 accounts



# New Superintendents

- If you are a new superintendent this year or have a new bookkeeper, contact Ann Carmoney to ensure you are listed as the main point of contact. [ann.carmoney@nebraska.gov](mailto:ann.carmoney@nebraska.gov)
- 
- You can stay on after the meeting and ask a team member if you are listed.



# REAP Quick Links Doc

- The REAP team recently published a new and improved “REAP Quick Links Document”
- This one-page PDF includes links to resources and webpages for commonly asked questions related to the SRSA and RLIS grant programs
- It is accessible online from the REAP Resources webpage



U.S. Department of Education

## UNDERSTANDING

# THE RURAL EDUCATION ACHIEVEMENT PROGRAM (REAP)

### GENERAL REAP INFORMATION

- REAP Informational Document [\(here\)](#)
- REAP FAQ Webpage [\(here\)](#)

### WHAT IS REAP?

The REAP formula grant program is authorized in the Elementary and Secondary Education Act (ESEA) under Title V, Part B. REAP's flexible formula grants enable rural LEAs to participate more fully and effectively in many of the ESEA programs and allow them to provide better educational services to their students.

### ALLOCATION

For FY 2023, REAP received a Congressional allocation of \$214,000,000. This allocation was divided evenly between the SRSA and RLIS programs.



### ELIGIBILITY DETERMINATION:

REAP awards grants under two programs: the **Small, Rural School Achievement (SRSA)** and **Rural and Low-Income Schools (RLIS)** programs. The REAP team works with State Coordinators to collect eligibility data. LEAs can check their eligibility throughout the year on the REAP website using the Master Eligibility Spreadsheet (MES).

### REAP ELIGIBILITY RESOURCES

- SRSA Eligibility and MES Access [\(here\)](#)
- RLIS Eligibility and MES Access [\(here\)](#)
- Considerations for Dual-Eligible LEAs [\(here\)](#)

SMALL, RURAL SCHOOL ACHIEVEMENT (SRSA)

RURAL AND LOW-INCOME SCHOOLS (RLIS)

### RLIS GRANT FUNDS:

RLIS funds are awarded to State Educational Agencies (SEAs), who then make subgrants to eligible LEAs.

\*Note: LEAs who are dual-eligible must choose which program to participate in.

### SRSA GRANT FUNDS:

SRSA funds are awarded directly from the Department to the LEAs.

### MANAGING SRSA FUNDS

- GS Access Information [\(here\)](#)
- Unique Entity Identification (UEI) and SAM.gov Support [\(here\)](#)

### HOW CAN REAP FUNDS BE USED?

Both SRSA and RLIS awards have a 27-month performance period during which the grantee may obligate the funds, followed by an additional 120 days to liquidate (or draw down) the funds. Allowable uses of REAP funds are informed by other Title programs.

### REAP FUNDS RESOURCES

- Guide to Using REAP Funds [\(here\)](#)
- Title V, part B of the ESEA [\(here\)](#)



Find out more!

Scan the QR (or [click here](#)) to access our REAP Resources page, which includes recordings of our REAP webinars, our informational document, and more.

# Rural Education Achievement Program

## GRANT TYPE

Formula grant

## OFFICE

[Office of Elementary and Secondary Education \(OESE\)](#)

## ALN

84.358A/B/C

## CONTACT

[reap@ed.gov](mailto:reap@ed.gov)  
202-401-0039

## APPLICATION STATUS

Not Applicable

## READY TO APPLY?

[View more resources for Rural Areas](#)

## ELIGIBILITY

- Local Educational Agencies (LEAs)
- State Educational Agencies (SEAs)

[HOME](#)

[LEGISLATION AND REGULATIONS](#)

[GUIDE TO USING RURAL EDUCATION ACHIEVEMENT PROGRAM \(REAP\) FUNDS](#)

[CONSIDERATIONS FOR DUAL-ELIGIBLE LEAS](#)

[ACCESSING FUNDS IN G6](#)

[UEI AND SAM SUPPORT](#)

[REAP CONTACTS](#)

Part B of Title V of the reauthorized Elementary and Secondary Education Act (ESEA) authorizes the Rural Education Achievement Program (REAP). REAP is designed to help rural districts that may lack the personnel and resources to compete effectively for Federal competitive grants and that often receive grant allocations in amounts that are too small to be effective in meeting their intended purposes.



# Small, Rural School Achievement Program

## GRANT TYPE

Formula grant

## OFFICE

[Office of Elementary and Secondary Education \(OESE\)](#)

## ALN

84.358A

## CONTACT

Leslie Poynter  
[reap@ed.gov](mailto:reap@ed.gov)  
202-401-0039

## APPLICATION DEADLINE

05/10/2024 - 11:59 PM EDT

## APPLICATION STATUS

Not Applicable

## READY TO APPLY?

[Learn more about REAP programs](#)

## ELIGIBILITY

- Local Educational Agencies (LEAs)





## Quick Links

- The REAP Quick Links document is a one-page resource that includes hyperlinks to resources and webpages for commonly asked questions related to the SRSA and RLIS grant programs.

[Click here to view the REAP Quick Links document](#)

## REAP Informational Document

- The REAP Informational Document is a comprehensive resource for recipients of the SRSA and REAP, providing essential information on relevant REAP processes, such as grant eligibility criteria, application process, and reporting requirements.
  - [REAP Informational Document](#) (January 19, 2021)

## REAP FAQ

- [REAP FAQ.pdf](#)

## REAP Use of Funds

- [REAP Uses of Funds Guide](#)
- [REAP Uses of Funds Data Visuals](#)
- [REAP Grant Performance Periods](#)

These are great links  
to find out more  
information & to  
answer and  
questions you might  
have





Questions?



# Thank you!

This presentation and additional handouts will be posted on our Federal Teams website soon.