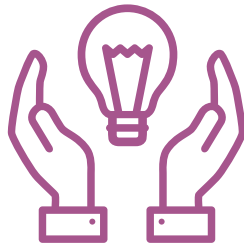




Welcome to the Rule 11 System of Support!

The NDE Office of Early Childhood developed the Rule 11 District PreK system of support to:

- ➔ Improve supports provided to Rule 11 PreK programs
- ➔ Align supports to district's K-12 continuous improvement goals
- ➔ Determine additional support needs
- ➔ Align with the school-age system of supports
- ➔ Provide supports & assistance equitably across the state



Advanced Support Plan 2024-25 Guide

This guide provides helpful links + additional information to districts on the advanced support plan.



Online Publications & Resources

- + [A Guide to Rule 11](#)
- + [Nebraska Teacher & Principal Performance Standards](#)
- + [NDE Learning Network online courses](#)
- + [Results Matter Nebraska website](#)
- + [Preschool Post newsletter](#)



NDE Sponsored Professional Development

- + [GOLD](#)
- + [Free GOLD online courses](#)
- + [ERS](#)
- + [CLASS](#)



Technical Assistance + Professional Development

- + At least 1 quarterly technical assistance visit from Education Specialist:
 - 1st quarter visit: Review data & develop action plan
 - 2nd quarter visit: Fall observation feedback and action plan updates
 - 3rd quarter visit: Supports/PD based on action plan updates
 - 4th quarter visit: Spring observation feedback/end of year action plan review
- + Targeted professional development recommendations
 - Utilize action plan to determine professional development needs
 - Funding assistance from the NDE (as available)
- + Invitation to join Nebraska's Early Childhood Educator Network Book Club for an opportunity to engage with and gain knowledge from fellow early educators throughout the state



Community Partnerships

- + [Communities for Kids](#) (Nebraska Children & Families Foundation)
- + [Early Childhood MTSS Educator Resources](#)
- + Connection to the [NAESP Administrator Network](#) to support Administrator's needs
- + [Step Up to Quality](#)
 - Encouraged participation
 - Access to coaching



Classroom Observations

- + Fall ERS observation: 30% of classrooms (10 at most)
- + Spring ERS observation (or CLASS observation if fall ERS overall score was ≥ 5)



Learn more about Rule 11 district support plans at bit.ly/Rule11Supports



Find & Connect with your Early Childhood Education Specialist