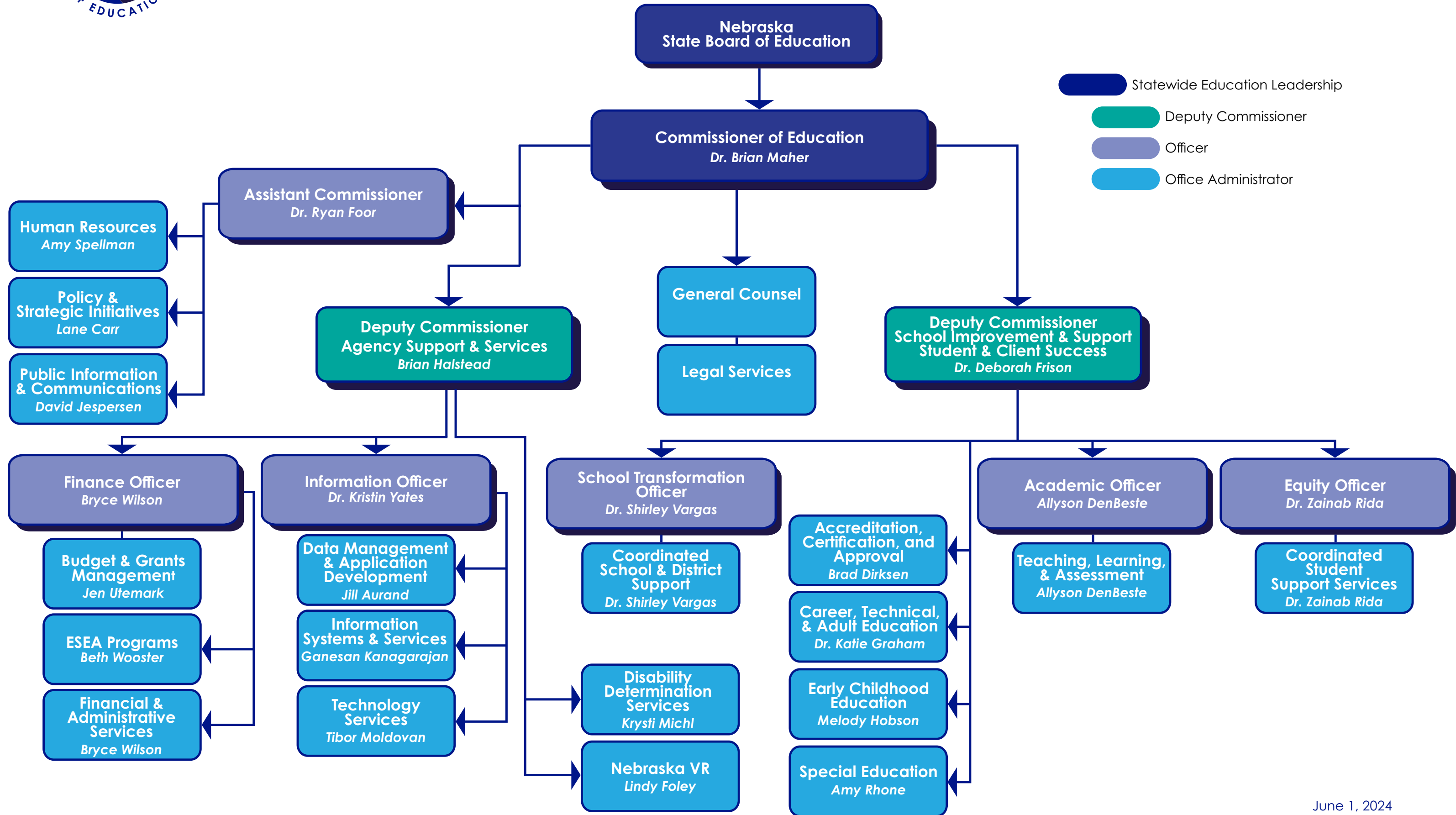




# 2024 NDE Organizational Structure



# Organizational Structure Contact List

## Commissioner of Education

Dr. Brian Maher  
[brian.maher@nebraska.gov](mailto:brian.maher@nebraska.gov)  
402.471.5021

## Deputy Commissioner, School Improvement & Support, Student & Client Success

Dr. Deborah Frison  
[deborah.frison@nebraska.gov](mailto:deborah.frison@nebraska.gov)  
402.405.2129

## Deputy Commissioner, Agency Support & Services

Brian Halstead  
[brian.halstead@nebraska.gov](mailto:brian.halstead@nebraska.gov)  
402.471.0732

## Assistant Commissioner

Dr. Ryan Foor  
[ryan.foor@nebraska.gov](mailto:ryan.foor@nebraska.gov)  
402.471.5030

## Finance Officer

Bryce Wilson  
[bryce.wilson@nebraska.gov](mailto:bryce.wilson@nebraska.gov)  
402.471.4320

## Information Officer

Dr. Kristin Yates  
[kristin.yates@nebraska.gov](mailto:kristin.yates@nebraska.gov)  
402.309.0203

## School Transformation Officer

Dr. Shirley Vargas  
[shirley.vargas@nebraska.gov](mailto:shirley.vargas@nebraska.gov)  
402.326.5371

## Academic Officer

Allyson DenBeste  
[allyson.denbeste@nebraska.gov](mailto:allyson.denbeste@nebraska.gov)  
402.310.2897

## Equity Officer

Dr. Zainab Rida  
[zainab.rida@nebraska.gov](mailto:zainab.rida@nebraska.gov)  
402.471.4620

## Human Resources

Amy Spellman  
[amy.spellman@nebraska.gov](mailto:amy.spellman@nebraska.gov)  
402.471.5027

## Policy & Strategic Initiatives

Lane Carr  
[lane.carr@nebraska.gov](mailto:lane.carr@nebraska.gov)  
402.419.3012

## Public Information & Communications

David Jespersen  
[david.jespersen@nebraska.gov](mailto:david.jespersen@nebraska.gov)  
402.471.4537

## Budget & Grants Management

Jen Utemark  
[jen.utemark@nebraska.gov](mailto:jen.utemark@nebraska.gov)  
402.471.4313

## ESEA Programs

Beth Wooster  
[beth.wooster@nebraska.gov](mailto:beth.wooster@nebraska.gov)  
402.310.1390

## Financial & Administrative Services

Bryce Wilson  
[bryce.wilson@nebraska.gov](mailto:bryce.wilson@nebraska.gov)  
402.471.4320

## Data Management & Application Development

Jill Aurand  
[jill.aurand@nebraska.gov](mailto:jill.aurand@nebraska.gov)  
402.937.2610

## Information Systems & Services

Ganesan Kanagarajan  
[ganesan.kanagarajan@nebraska.gov](mailto:ganesan.kanagarajan@nebraska.gov)  
402.580.5465

## Technology Services

Tibor Moldovan  
[tibor.moldovan@nebraska.gov](mailto:tibor.moldovan@nebraska.gov)  
402.471.1200

## Coordinated School & District Support

Dr. Shirley Vargas  
[shirley.vargas@nebraska.gov](mailto:shirley.vargas@nebraska.gov)  
402.326.5371

## Disability Determination Services

Krysti Michl  
[krysti.michl@ssa.gov](mailto:krysti.michl@ssa.gov)  
402.471.3364

## Nebraska VR

Lindy Foley  
[lindy.foley@nebraska.gov](mailto:lindy.foley@nebraska.gov)  
402.430.1689

## Accreditation, Certification, & Approval

Brad Dirksen  
[brad.dirksen@nebraska.gov](mailto:brad.dirksen@nebraska.gov)  
402.430.0267

## Career, Technical, & Adult Education

Dr. Katie Graham  
[katie.graham@nebraska.gov](mailto:katie.graham@nebraska.gov)  
402.937.2809

## Early Childhood Education

Melody Hobson  
[melody.hobson@nebraska.gov](mailto:melody.hobson@nebraska.gov)  
402.860.4055

## Special Education

Amy Rhone  
[amy.rhone@nebraska.gov](mailto:amy.rhone@nebraska.gov)  
402.207.9978

## Teaching, Learning, & Assessment

Allyson DenBeste  
[allyson.denbeste@nebraska.gov](mailto:allyson.denbeste@nebraska.gov)  
402.471.5021

## Coordinated Student Support Services

Dr. Zainab Rida  
[zainab.rida@nebraska.gov](mailto:zainab.rida@nebraska.gov)  
402.471.4620