

Farm to School
NEBRASKA



Nebraska Local Food For Schools (LFS) Program Round 2

April 16, 2024

We are recording today's session for those who cannot attend.



Agenda

- Overview of Local Food for Schools (LFS) program
- Allowable/ Unallowable Costs
- Oversight/ Monitoring
- LFS + Farm to School
- Procuring Local Products



Chat Box Introductions

- ✓ Name
- ✓ District or Organization
- ✓ Location (town)
- ✓ Favorite Spring Produce



Overview of LFS

- The NDE was awarded nearly \$1.5 million in funding to sub-award to eligible School Food Authorities (SFAs)
 - First Allocation: \$880,461.51 to 121 eligible SFAs.
 - Second Allocation: \$1,164,916.97
- SFAs can be reimbursed with LFS funds for purchases of unprocessed or minimally processed domestic, locally grown food from local producers, small businesses, and socially disadvantaged farmers/ producers
- LFS funds will reimburse the non-profit school food service account for qualifying food purchases used in National School Lunch Program



LFS Program Overarching Goals

- **Increase** local school food purchases
- **Strengthen** local and regional food systems
- **Support** local, small, and socially disadvantaged farmers/ producers
- **Establish, strengthen, and broaden** partnerships between farmers/ producers and schools





Eligible Applicants

- Sub-awards will be distributed to schools that participates in the National School Lunch Program (NSLP) or School Breakfast Program (SBP) and are in good standing.
- State-wide allocation

Eligible Beneficiaries of LFS Funds

- Farmers, producers, processors, or distributors of local domestic product that meet the definition of a local or regional producer
- SFAs must purchase from small businesses and **target** socially disadvantaged farmers/ producers to the extent practicable



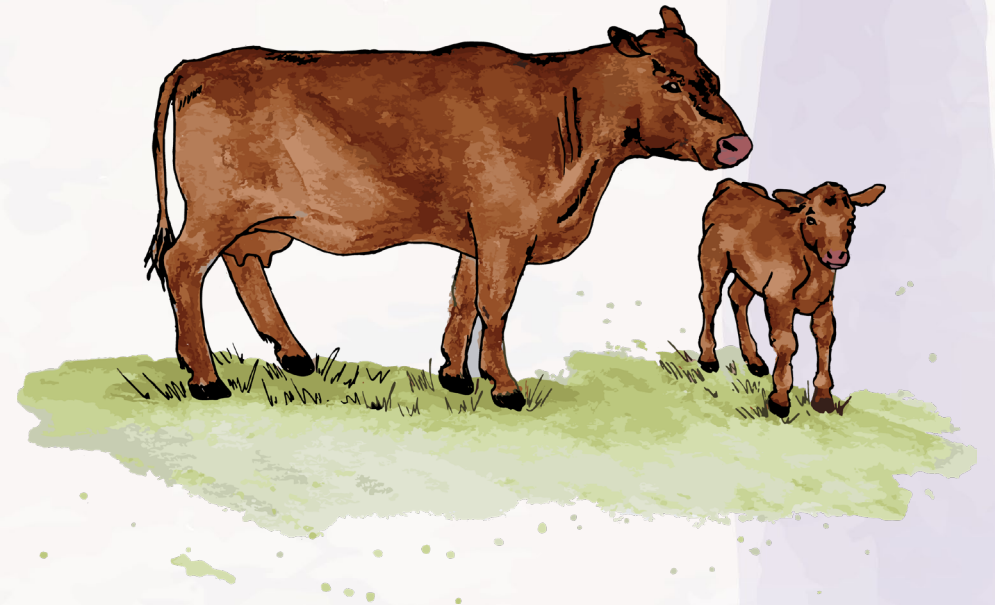
Local/ Regional Definitions

Local/ Regional Food

- LFS food must be raised, produced, aggregated (collected from multiple farmers), stored, processed and distributed in Nebraska or within 400 miles from delivery location.

Local/ Regional Producers

- Farmers, producers, ranchers, processors, distributors in Nebraska or 400 miles of the delivery destination



Definitions Continued

Socially Disadvantaged

- LFS must target producers, farmers, or ranchers that is a member of a Socially Disadvantaged Group: members have been subject to discrimination based on age, color, race, national origin, sex, disability, religion, sexual orientation, political beliefs, reprisal, income derived from public assistance

Small Business

- A small business is generally defined by the U.S. Small Business Administration (SBA) as a business that is: a for profit-businesses of any legal structure; independently owned and operated, not nationally dominant in its field, and physically located and operated in the U.S. or its territories, and fewer than 500 employees.

What can be purchased with my LFS allocation?

Allowable Unprocessed or Minimally Processed Foods

Minimal processing states and/ or forms:

- Whole, cut, pureed, etc.
- Fresh, frozen, canned, dried, etc.

Examples of Allowable foods:

- Fluid milk (unflavored and flavored)
- Other dairy products such as cheese (shredded, sliced, block) and yogurt
- Fruits and vegetables (including fresh, frozen, canned, dry, pre-cut, and 100% juices)
- Whole Grain Rich products such as pastas and rice
- Meats (whole, pieces, ground) and eggs
- Meat alternates (beans, legumes)

Unallowable Foods Considered Processed

Significantly processed or prepared:

- Pre-made/ Ready to eat foods

Examples of Unallowable foods:

- Pre-made pizza
- Breads, muffins, crackers
- Pre-packaged sandwiches
- Chicken nuggets and breaded meat items
- Cereal
- Produce seeds
- Live animals

Opt-In Survey – Deadline May 21, 2024

SFA Agreement Number

This is a six digit number (XXXXXX) listed in CNP at the top left above SFA.

Your First and Last Name

School Nutrition Programs

NEBRASKA DEPARTMENT OF EDUCATION

Applications | Claims | Compliance | Reports | Security | Search

Programs | Year | Help | Log Out

Applications > Application Packet >

School Year: 2023 - 2024

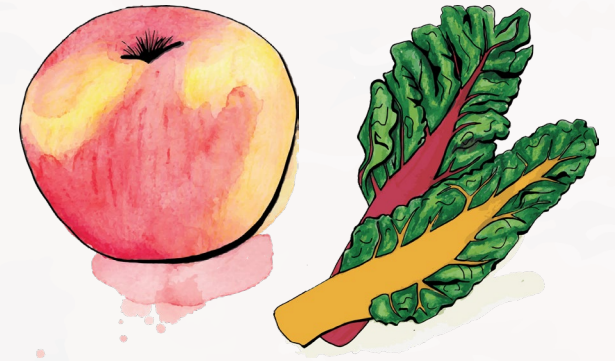
2023 - 2024 Application Packet

| | | |
|--------|----------------|---|
| 280001 | Status: Active | Packet Submitted Date: 04/08/2024 |
| | | Packet Approved Date: 04/08/2024 |
| | | Packet Original Approval Date: 10/05/2023 |
| | | Packet Status: Approved |

Omaha, NE 68131-2024

1. Our institution chooses to opt into the Local Food for Schools Grant and accept the full allocated amount

- Yes
- No, the maximum amount our SFA wishes to receive is:
- No, we wish to decline allocations from the Local Food for Schools Grant.



Award Timeline

- Opt-in Survey:
 - Opens April 23, 2024
 - Closes May 21, 2024
- Grant Award Notification (GAN) received by the SFA as early as July 1, 2024
- Second Round Funding Period: as early as July 1, 2024, and through June 2025

Reimbursement Requests

- Participating SFAs will submit a quarterly reimbursement request to NDE Nutrition Services via Google Forms
- Deadline to submit reimbursement and the payment processing date is noted below and, in the FAQ



| Deadline to Submit Request & Documentation | Payment Processing Date |
|---|--------------------------------|
| September 10, 2024 | October 10, 2024 |
| December 10, 2024 | January 10, 2024 |
| March 10, 2025 | April 10, 2024 |
| June 10, 2024 | July 10, 2024 |

Required Reimbursement Request Information

- SFAs will be required to report the following information on the quarterly reimbursement form:
 - Invoice Date
 - Vendor
 - Original Source (if farm or producer is not the vendor)
 - Confirm sourcing is from a small business
 - Indicate if the producer providing product is socially disadvantaged
 - Delivery miles if outside of Nebraska
 - First time purchasing from this producer?
 - Will you purchase again from this producer?
 - Item, Item Quantity, Unit (case, each, lbs., etc.), Total price on invoice for item, Estimated pounds

Reimbursement Request Example

Nebraska Local Foods for Schools Claim Submission Form

Quarterly Reimbursement Form for Nebraska Local Food for Schools Program - For food grown, raised, and processed minimally in Nebraska or within 400 miles of the delivery destination.

Please submit a separate form for each unique invoice. To receive timely reimbursement, please complete this form by the 10th of the month following the quarterly claim period.

Visit the FAQ: <https://www.education.ne.gov/wp-content/uploads/2023/06/Updated-FAQ-6.16.pdf> or reach out to nde.lfs@nebraska.gov for details on definitions, allowable costs, and other questions.

taylor.schorsch@nebraska.gov [Switch account](#)



The name, email, and photo associated with your Google account will be recorded when you upload files and submit this form

* Indicates required question

School Food Authority/Organization Name *

Your answer

Contact Name *

Your answer

Contact Email *

Your answer

Invoice Date *

Date

mm/dd/yyyy



Original Source (this must be entered if the farm or producer is **not** the vendor - for example, if you purchased from a local market, the original farm/production source must be listed). *

List "N/A" if the vendor is the farmer/producer.

Your answer _____

Delivery miles (response required only if original source or vendor is located **outside** of Nebraska; must not exceed 400 miles)

Your answer _____

Please confirm you are sourcing from a small business (visit the FAQ for definition). *

Yes

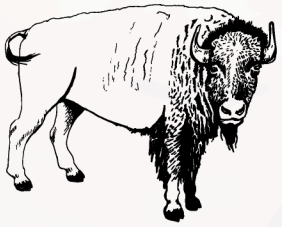
Item #1 Description *

- Apples
- Asparagus
- Beans, Dry (Great Northern, Pinto, Kidney, Navy, Black, Pink, Garbanzo)
- Beef
- Berries
- Bison
- Butter
- Cabbage
- Cantaloupe/Muskmelon
- Carrots
- Cheese
- Chicken

Benefits of Local Food in School Meals

- Supports local farmers, businesses and local economies
- Increases school meal quality and overall program participation
- Reduces food waste in schools
- Increases kids' willingness to try new fruits and vegetables
- Supports school wellness policies and broader school board priorities
- Align with community priorities and advocacy efforts to strengthen local food system





“

EDUCATION



SCHOOL GARDENS

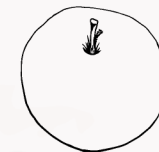
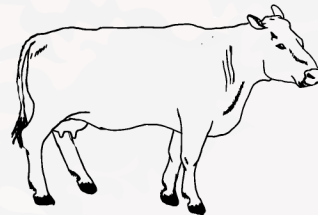


PROCUREMENT



”

Farm to school enriches the connection communities have with fresh, healthy food and local food producers by changing food purchasing and education practices at schools and early care & education environments.



Harvest of the Month

NEBRASKA

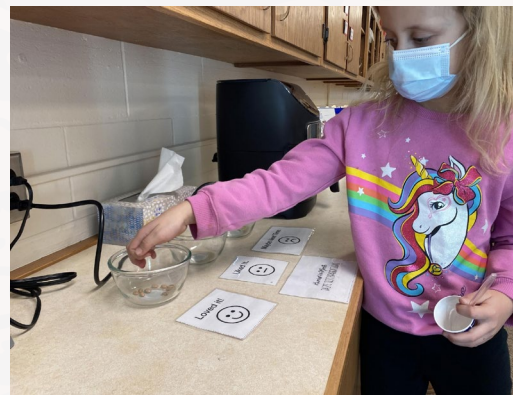


Harvest of the Month CALENDAR

AUGUST - MELONS
SEPTEMBER - ARONIA BERRIES
SEPTEMBER - CABBAGE
OCTOBER - CARROTS
OCTOBER - APPLES
NOVEMBER - TURKEYS
DECEMBER - WINTER SQUASH
JANUARY - POTATOES
JANUARY - BISON
JANUARY - SWEET POTATOES
JANUARY - BEEF
MARCH - DRY BEANS
APRIL - LEAFY GREENS
MAY - ASPRAGUS

Months for each crop are only suggested. Many of the crops may be available in multiple months and can be featured in the month you are able to source them.

Farm to School NEBRASKA



ARONIA BERRIES TRIVIA

Which berries are in the most popular healthy oil?

A. Blueberries
 B. Raspberries
 C. Apples
 D. Tomatoes

Due to their antioxidant properties, aronia berries are especially beneficial when combined with polyphenols found in dark chocolate.

A. Sweetness
 B. Sourness
 C. Astringency
 D. Taste

HUMMUS WITH NORTHERN BEANS

TASTE TEST

| Ingredients | 50 Sample Servings | 100 Sample Servings |
|---|--|--|
| Local great northern beans (or 1/2 dried beans, soaked) | 1 1/2 c or (1 1/2 dried beans, soaked) | 2 1/2 c or (1 1/2 dried beans, soaked) |
| Lemon juice | 1/4 cup | 1/2 cup |
| Vegetable oil | 1 TBS + 1 tsp | 2 TBS + 2 tsp |
| Thin onion (optional) | 1/2 lb | 1 lb |
| Black pepper | 1/4 tsp | 1 tsp |
| Salt | 1 tsp | 2 tsp |

Directions:
 1. Place ingredients in a large blender or a food processor, working in 1/2 or 1/3 batches at a time if needed to accommodate blender size. Blend to desired consistency, more time for a smoother dip, less for a chunky dip.
 2. If hummus seems too thick, add 2-4 tablespoons of water to the food processor and blend again as needed.
 3. Serve with 840 scoop in 2 oz portion cups.
 General Control Panels HOLD for COSE service at 41°F or below.

Photo Credit: Nebraska Dry Bean Commission

WINTER SQUASH

LAKOTA
Wamnú (wah ma new) waniyetu (wa knee yay to)

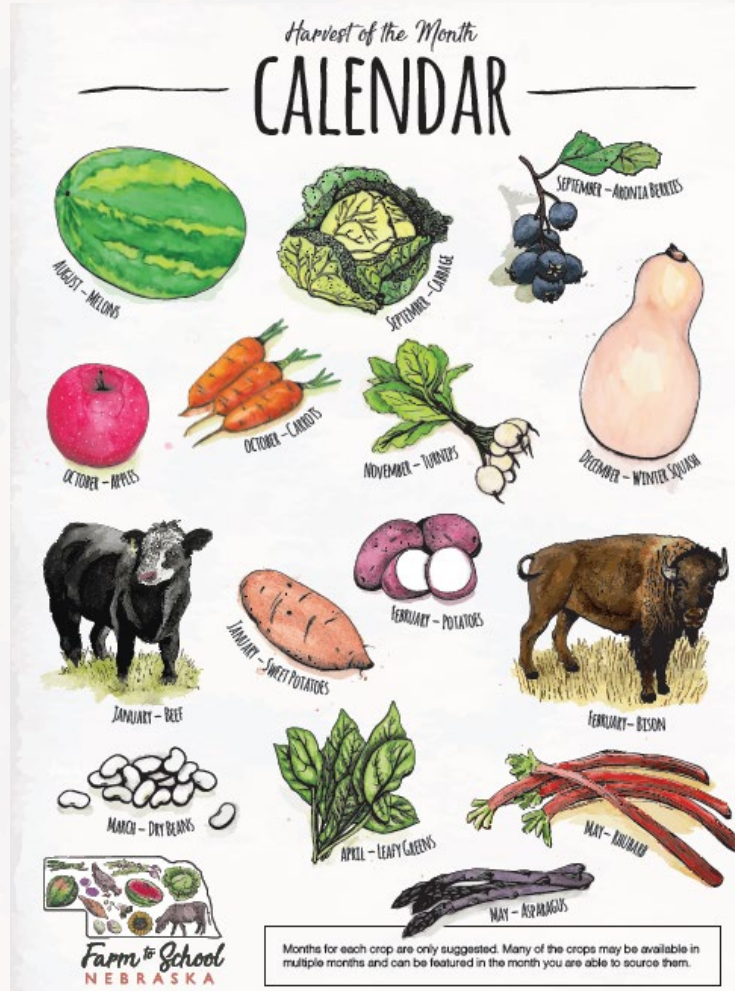
DAKOTA
Wamnu (wah ma new) waniyetu (wa knee yay to)

UMONHO'
Wato' (squash), Wato' mixa sabe (black squash)

PONCA
Wato' (squash), Wato' mixa sabe (black squash)

HOCHUNK
Wicąwą cozu (squash), Wicąwą cozu mañani (winter squash)

Harvest of the Month Items



INDIGENOUS FOODS

- Three-Sisters
 - Heirloom Corn
 - Summer and Winter Squash
 - Heirloom Dry Beans
- Native Herbs



SUMMER

- Tomatoes
- Berries
- Radishes
- Cucumbers
- Additional leafy greens

2024

- Dairy
- Honey
- Eggs



Nebraska Thursdays

LOCAL FOODS FOR NEBRASKA SCHOOLS



EAT LOCAL



March 8

- Beef Fajitas**
Green Field Farm peppers and onions; Harpers Ranch beef
- Pinto beans**
Nebraska Beans
- Local Lettuce Salad**
With cherry tomatoes
From our school greenhouse
- Homemade Pumpkin Bars**
From our school greenhouse





These institutions are equal opportunity providers.




NEBRASKA Crunch Off Champs!

2019 2020 2021 2022 AND **2023!!**



MOUNTAIN PLAINS CRUNCH OFF
NEBRASKA DEPARTMENT OF EDUCATION

OCTOBER 2023
NEBRASKA CRUNCH OFF

DATE OF YOUR CHOICE DURING THE MONTH OF OCTOBER

October is Farm to School Month. Join thousands of Nebraskans as we compete against other states in our region to Crunch Off! Take a bite into local, CRUNCHY fruits or vegetables.
Register your team today so your Crunch is counted!

www.education.ne.gov/ns/farm-to-school/mountain-plains-crunch



Walthill Public School



Super Kids Club, Broken Bow



O'Neill Public Schools

Sourcing Local

- Direct from producers
- Local retailers
- Processors
- Food hubs and aggregators
- Gardens
- Farmers' Markets



MARKET MAKER™

- Network of food, farm business, and buyer directories
- Producers and schools can register their organizations to promote product offerings
- Free for all users
- Contact: Ben Jewell for more information or for help setting up your profile



Register —

Creating a *MarketMaker* profile gives your business immediate exposure to buyers and sellers, locally and nationwide

Type Of Buyer

- Aggregator/Broker/Distributor
- Chef/Restaurant Buyer/Caterer
- Education ⌵
 - Farm to School
 - Fishery to School

- Faith-Based
- Food Retail

- Food Service Management
- Institutional ⌵
 - Correctional
 - Governmental
 - Healthcare

Risk Management Requirements

Liability Insurance

Select

- <\$500K
- \$1M
- \$1M-\$3M
- >\$3M

- Seller responsible for shipping/delivery

Buying/sourcing Region

- Local ⌵
- National
- Mid-Atlantic (USA)
- Mid-West (USA)
- Mountain Plains (USA)

- Northeast (USA)
- Southeast (USA)
- Southwest (USA)
- Western (USA)

- Canadian Import
- Mexican Import
- International Import

Other

Minimum Volume Of Product

Volume

Other Requirements

Current Needs

Learn More ...

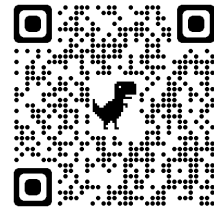


Nebraska Farm to School

education.ne.gov/ns/farm-to-school/resources/

USDA Farm to School

fns.usda.gov/f2s/farm-to-school



National Farm to School Network

farmtoschool.org



Questions?





THANK YOU

Taylor Schorsch Program Specialist

402-405-2629, taylor.schorsch@nebraska.gov

Sarah Meyer Farm to School Specialist

402-853-1655, sarah.m.meyer@nebraska.gov

Kayte Partch Director of Child Nutrition Program,

402-471-2945 kayte.partch@education.gov

In accordance with federal civil rights law and U.S. Department of Agriculture (USDA) civil rights regulations and policies, this institution is prohibited from discriminating on the basis of race, color, national origin, sex (including gender identity and sexual orientation), disability, age, or reprisal or retaliation for prior civil rights activity.

Program information may be made available in languages other than English. Persons with disabilities who require alternative means of communication to obtain program information (e.g., Braille, large print, audiotope, American Sign Language), should contact the responsible state or local agency that administers the program or USDA's TARGET Center at (202) 720-2600 (voice and TTY) or contact USDA through the Federal Relay Service at (800) 877-8339.

To file a program discrimination complaint, a Complainant should complete a Form AD-3027, USDA Program Discrimination Complaint Form which can be obtained online

at: <https://www.usda.gov/sites/default/files/documents/ad-3027.pdf>, from any USDA office, by calling (866) 632-9992, or by writing a letter addressed to USDA. The letter must contain the complainant's name, address, telephone number, and a written description of the alleged discriminatory action in sufficient detail to inform the Assistant Secretary for Civil Rights (ASCR) about the nature and date of an alleged civil rights violation. The completed AD-3027 form or letter must be submitted to USDA by:

1.mail:

U.S. Department of Agriculture
Office of the Assistant Secretary for Civil Rights
1400 Independence Avenue, SW
Washington, D.C. 20250-9410; or

2.fax:

(833) 256-1665 or (202) 690-7442; or

3.email:

Program.Intake@usda.gov

This institution is an equal opportunity provider.