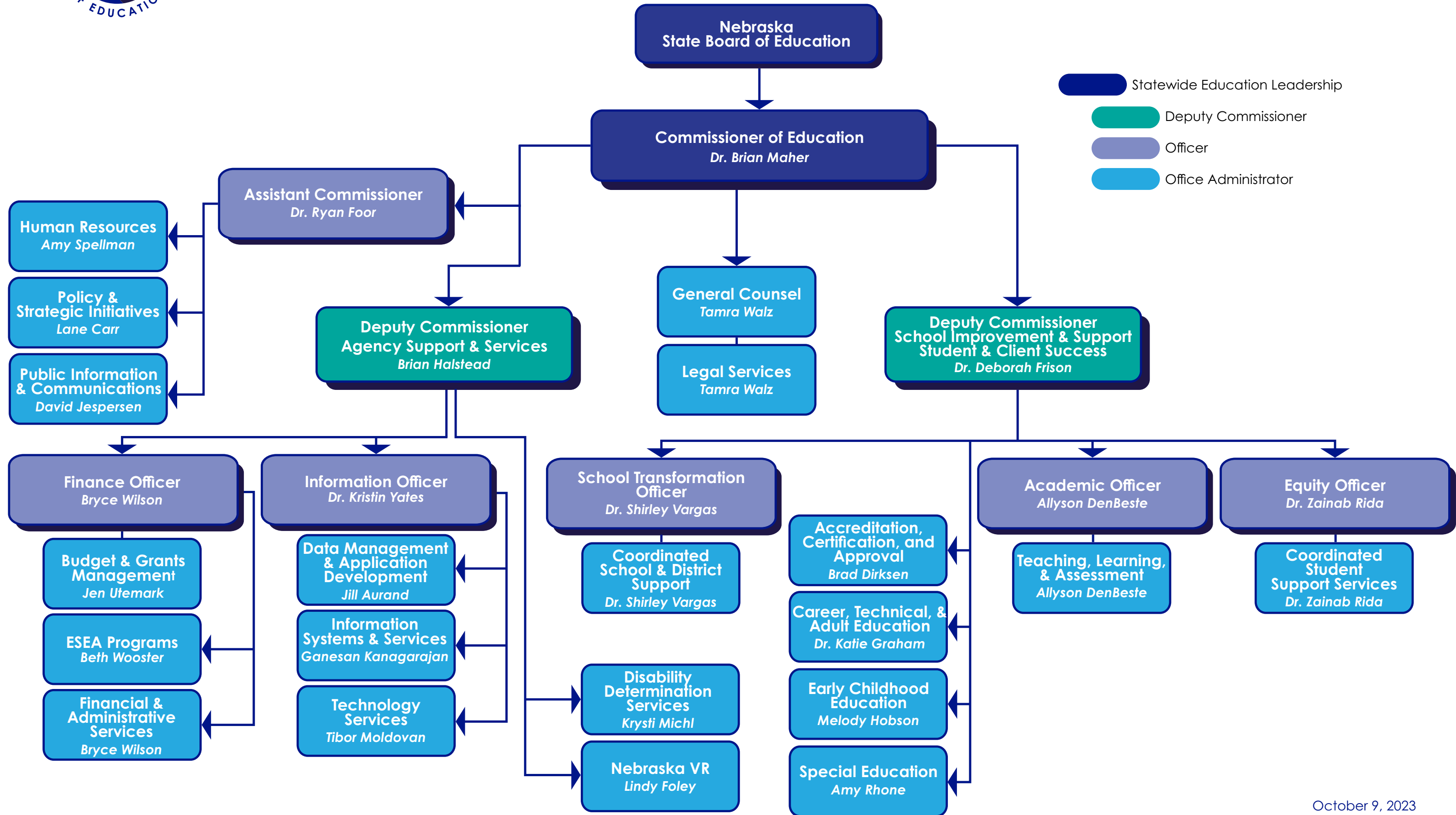




2023 NDE Organizational Structure



- Statewide Education Leadership
- Deputy Commissioner
- Officer
- Office Administrator

Organizational Structure Contact List

Commissioner of Education

Dr. Brian Maher
brian.maher@nebraska.gov
402.471.5021

Deputy Commissioner, School Improvement & Support, Student & Client Success

Dr. Deborah Frison
deborah.frison@nebraska.gov
402.405.2129

Deputy Commissioner, Agency Support & Services

Brian Halstead
brian.halstead@nebraska.gov
402.471.0732

Assistant Commissioner

Dr. Ryan Foor
ryan.foor@nebraska.gov
402.471.5030

Finance Officer

Bryce Wilson
bryce.wilson@nebraska.gov
402.471.4320

Information Officer

Dr. Kristin Yates
kristin.yates@nebraska.gov
402.309.0203

School Transformation Officer

Dr. Shirley Vargas
shirley.vargas@nebraska.gov
402.326.5371

Academic Officer

Allyson DenBeste
allyson.denbeste@nebraska.gov
531.310.2897

Equity Officer

Dr. Zainab Rida
zainab.rida@nebraska.gov
402.471.4620

Human Resources

Amy Spellman
amy.spellman@nebraska.gov
402.471.5027

Policy & Strategic Initiatives

Lane Carr
lane.carr@nebraska.gov
402.419.3012

Public Information & Communications

David Jespersen
david.jespersen@nebraska.gov
402.471.4537

Budget & Grants Management

Jen Utemark
jen.utemark@nebraska.gov
402.471.4313

ESEA Programs

Beth Wooster
beth.wooster@nebraska.gov
402.310.1390

Financial & Administrative Services

Bryce Wilson
bryce.wilson@nebraska.gov
402.471.4320

Data Management & Application Development

Jill Aurand
jill.aurand@nebraska.gov
402.937.2610

Information Systems & Services

Ganesan Kanagarajan
ganesan.kanagarajan@nebraska.gov
402.580.5465

Technology Services

Tibor Moldovan
tibor.moldovan@nebraska.gov
402.471.1200

Coordinated School & District Support

Dr. Shirley Vargas
shirley.vargas@nebraska.gov
402.326.5371

Disability Determination Services

Krysti Michl
krysti.michl@ssa.gov
402.471.3364

Nebraska VR

Lindy Foley
lindy.foley@nebraska.gov
402.430.1689

Accreditation, Certification, & Approval

Brad Dirksen
brad.dirksen@nebraska.gov
402.430.0267

Career, Technical, & Adult Education

Dr. Katie Graham
katie.graham@nebraska.gov
402.937.2809

Early Childhood Education

Melody Hobson
melody.hobson@nebraska.gov
402.860.4055

Special Education

Amy Rhone
amy.rhone@nebraska.gov
402.207.9978

Teaching, Learning, & Assessment

Allyson DenBeste
allyson.denbeste@nebraska.gov
531.310.2897

Coordinated Student Support Services

Dr. Zainab Rida
zainab.rida@nebraska.gov
402.471.4620