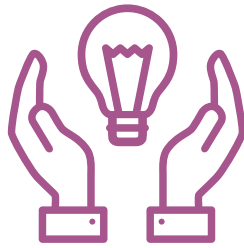




# Welcome to the Rule 11 System of Support!

The NDE Office of Early Childhood developed the Rule 11 District PreK system of support to:

- ➔ Improve supports provided to Rule 11 PreK programs
- ➔ Determine additional support needs
- ➔ Align with the school-age system of supports
- ➔ Provide supports & assistance equitably across the state



## Advanced Support Plan 2023-24 Guide

This guide provides helpful links + additional information to districts on the advanced support plan.



### Online Publications & Resources

- + [A Guide to Rule 11](#)
- + [Nebraska Teacher & Principal Performance Standards](#)
- + [NDE Learning Network online courses](#)
- + [Results Matter Nebraska website](#)
- + [Preschool Post newsletter](#)



### NDE Sponsored Professional Development

- + [GOLD](#)
- + [ERS](#) (Intro training is free through May 2024)
- + Free Environment Rating Scales Institute webinars for [ECERS-3](#) and [ITERS-3](#) items
- + [CLASS](#) (Intro training is free through May 2024)
- + [Free early childhood training opportunities](#)



### Technical Assistance + Professional Development

- + At least 1 quarterly technical assistance visit from Education Specialist:
  - **1<sup>st</sup> quarter visit:** Review data & develop action plan
  - **2<sup>nd</sup> quarter visit:** Observation feedback
  - **3<sup>rd</sup> quarter visit:** Supports/PD based on action plan updates
  - **4<sup>th</sup> quarter visit:** Observation feedback/end of year action plan review
- + Targeted professional development recommendations
  - Utilize action plan to determine professional development needs
  - Funding assistance from the NDE (as available)
- + Invitation to join Nebraska's Early Childhood Educator Network for an opportunity to engage with and gain knowledge from fellow early educators throughout the state



### Community Partnerships

- + [Communities for Kids](#) (Nebraska Children & Families Foundation)
- + [Early Childhood MTSS Educator Resources](#)
- + Connection to the [NAESP Administrator Network](#) to support Administrator's needs
- + [Step Up to Quality](#)
  - Encouraged participation
  - Access to coaching



### Classroom Observations

- + Fall ERS observation: 30% of classrooms (10 at most)
- + Spring ERS observation (or CLASS observation if fall ERS overall score was  $\geq 5$ )



Learn more about Rule 11 district support plans at [bit.ly/Rule11Supports](https://bit.ly/Rule11Supports)



Find & Connect with your Early Childhood Education Specialist