

Welcome ~*Land Acknowledgement*

"We would like to begin by acknowledging that the University of Nebraska is a land-grant institution with campuses and programs on the past, present, and future homelands of the Pawnee, Ponca, Oto-Missouria, Omaha, Dakota, Lakota, Arapaho, Cheyenne, and Kaw Peoples, as well as the relocated Ho-Chunk, Iowa, and Sac and Fox Peoples. Please take a moment to consider the legacies of more than 150 years of displacement, violence, settlement, and survival that bring us together here today. At the University of Nebraska, we respect and seek out inclusion of differences, realizing we can learn from each other, and we look forward to building long-lasting relationships with the Indigenous People of Nebraska."

<https://diversity.unl.edu/recognizing-land>

<https://nativegov.org/news/a-guide-to-indigenous-land-acknowledgment/>



Welcome ~Who We Are

- Jack Hilgert

- Conservation Education Coordinator
- PLT and WET State Coordinator

- Nebraska Forest Service

- UNL Affiliate through IANR
- *To enrich the lives of all Nebraskans by protecting, restoring and utilizing Nebraska's tree and forest resources.*



What are Project Learning Tree and Project WET?

History, Goals, and Materials



What is Project Learning Tree?

- A comprehensive Environmental Education Program, started in the 1970's. The oldest "Project" curriculum program.
- Since 1976, PLT has reached 138 million students and trained 765,000 educators to help students learn how to think, not what to think about complex environmental issues.
- PLT Works- most trained educators report that they use it at least monthly.
- In Nebraska, PLT is sponsored by: The Nebraska Forest Service. Nationally, PLT is sponsored by the Sustainable Forestry Initiative.



PROJECT
LEARNING
TREE
NEBRASKA



PLT uses the forest as a “window to the world” to:

- Increase understanding of our complex environment
- Stimulate critical and creative thinking
- Develop the ability to make informed decisions on environmental issues
- Instill the confidence and commitment to take responsible action

HOW to Think

Not WHAT to Think



What is Project WET?

- A comprehensive Environmental Education Program, started in the 1990's.
- Private Nonprofit Foundation
- Multiple Guides ranging from preK-12th grade as well as materials for youth.
- Advancing water education to understand global challenges and inspire local solutions
- In Nebraska, WET is sponsored by: The Nebraska Forest Service.



NEBRASKA

project **WET**

WATER EDUCATION TODAY



Benefits of Learning Outdoors

Physical Health

Exposure to nature significantly reduces:

- Blood pressure
- Cortisol levels (stress)
- Heart rate
- Incidence of diabetes

- The association between greenspace exposure and positive health outcomes was stronger for people with low socioeconomic status.

Mental Health

Access to nature promotes

- Memory
- Competence
- Supportive social groups
- Self-discipline

Access to nature also

- Moderates stress
- Improves behaviors and symptoms of ADHD



Where can I find out more?

Attend a Nebraska Workshop!

Workshops are offered each month in-person around the state as well as virtually!

Register for our monthly Conservation Education eNewsletter to learn about upcoming trainings.

Want professional develop just for your school? Contact us to set up a private training!



PLT and Bloom Box Fall 2023

Deadline to register July 31st

August Training:

- One 2-hour live zoom opening session
- One 2-hour self-paced online module
- One 2-hour live zoom closing session

Total of 6 hours of childcare licensing approved PD available to staff.



Educational Resources from NFS

Here are a few ways NFS can help you continue Environmental Education with your students.



1. Virtual and IN PERSON Classroom Visits
2. Forestry Field Trips in Plattsmouth and Lincoln
3. Digital Professional Development and Workshops
4. PLT Tree Trunks located throughout the State: Ponca, Trenton, Gering, Hastings, Columbus, Omaha, and Lincoln.
5. Other EE Support

Sign up for our monthly eNewsletter!

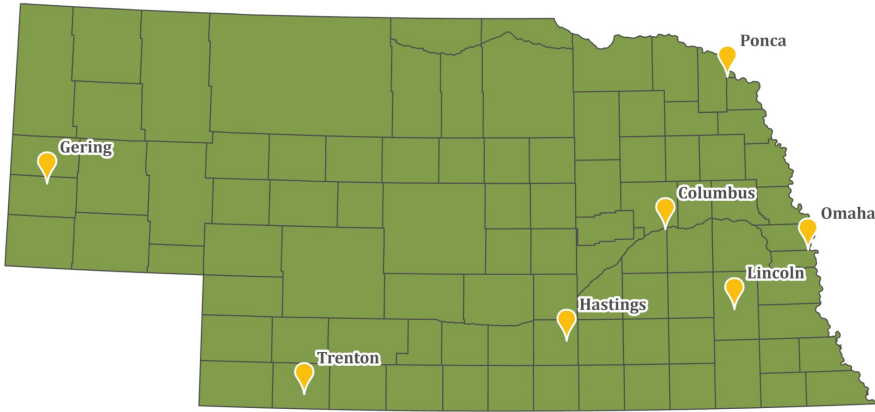
nfs.unl.edu/education

Tree Trunks

Copies of Project Learning Tree Curriculum and resources to assist in activity facilitation.

Contact your local AEC today!

<https://go.unl.edu/aecnearme>



Data Source:
Nebraska Forest Service
and US Census Bureau

0 30 60 120 Miles



eNewsletter



Upcoming Workshops





NEBRASKA FOREST SERVICE



“Far and away the best prize that life has to offer is the chance to work hard at work worth doing”

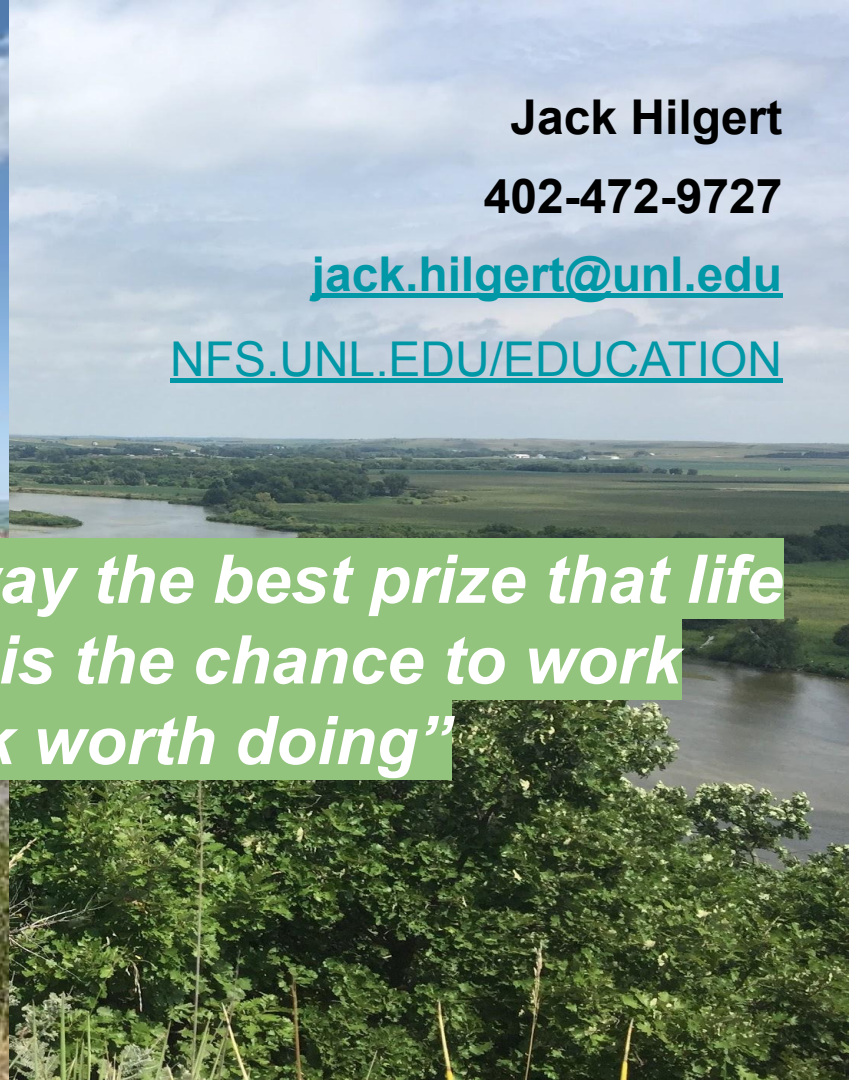
~Theodore Roosevelt

Jack Hilgert

402-472-9727

jack.hilgert@unl.edu

NFS.UNL.EDU/EDUCATION



Why is Conservation Education Important?

Why do we do Environmental Education? Why do kids need Environmental Education?



Who are these characters?



What are the common names of these?



© 2008 Arbor Day Foundation



A connection to nature makes people want to do something.



NEBRASKA ENDANGERED AND THREATENED SPECIES

	Common Name	Scientific Name	State Status	Federal Status
BIRDS	Eskimo Curlew *	<i>Numenius borealis</i>	Endangered	Endangered
	Whooping Crane	<i>Grus americana</i>	Endangered	Endangered
	Interior Least Tern	<i>Sterna antillarum athalassos</i>	Endangered	Endangered
	Piping Plover	<i>Charadrius melodus</i>	Threatened	Threatened
	Rufa Red Knot ^	<i>Calidris canutus rufa</i>	Threatened	Threatened
	Mountain Plover	<i>Charadrius montanus</i>	Threatened	
MAMMALS	Black-footed Ferret *	<i>Mustela nigripes</i>	Endangered	Endangered
	Gray Wolf ^	<i>Canis lupus</i>	Endangered	Endangered
	Swift Fox	<i>Vulpes velox</i>	Endangered	
	River Otter	<i>Lontra canadensis</i>	Threatened	
	Southern Flying Squirrel	<i>Glaucomys volans</i>	Threatened	
	Northern Long-eared Bat	<i>Myotis septentrionalis</i>	Threatened	Threatened 4(d) rule
FISH	Pallid Sturgeon	<i>Scaphirhynchus albus</i>	Endangered	Endangered
	Topeka Shiner	<i>Notropis topeka</i>	Endangered	Endangered
	Sturgeon Chub	<i>Macrhybopsis gelida</i>	Endangered	
	Blacknose Shiner	<i>Notropis heterolepis</i>	Endangered	
	Lake Sturgeon	<i>Acipenser fulvescens</i>	Threatened	
	Northern Redbelly Dace	<i>Chrosomus eos</i>	Threatened	
	Finescale Dace	<i>Chrosomus neogaeus</i>	Threatened	
INSECTS	American Burying Beetle	<i>Nicrophorus americanus</i>	Endangered	Endangered
	Salt Creek Tiger Beetle	<i>Cicindela nevadica lincolniiana</i>	Endangered	Endangered
REPTILES	Western Massasauga	<i>Sistrurus tergeminus</i>	Threatened	
MUSSELS	Scaleshell Mussel	<i>Leptodea leptodon</i>	Endangered	Endangered
PLANTS	Blowout Penstemon	<i>Penstemon haydenii</i>	Endangered	Endangered
	Colorado Butterfly Plant	<i>Gaura neomexicana</i> ssp. <i>coloradensis</i>	Endangered	Threatened
	Saltwort	<i>Salicornia rubra</i>	Endangered	
	Western Prairie Fringed Orchid	<i>Platanthera praeclara</i>	Threatened	Threatened
	Ute Ladies'-tresses	<i>Spiranthes diluvialis</i>	Threatened	Threatened
	American Ginseng	<i>Panax quinquefolius</i>	Threatened	
	Small White Lady's Slipper	<i>Cypripedium candidum</i>	Threatened	

Conservation Career Connections

Green Jobs have grown by **250%** in
the last decade.

In 2017 there were 9.8 million green
jobs, by 2030 there will be an
estimated **additional 15-60 million**
green jobs.



Homework:

1. Complete Asynchronous (online self-paced) Course from PLT.
 - a. Send Jack your certificate of completion.
2. Read [“Every Tree for Itself”](#) and [“Web of Life”](#) and watch correlated videos.
3. Teach “Every Tree for Itself” and “Web of Life” to a group of students.

Next session is March 8th at 7 PM CT via Zoom.





Evaluations

Please complete this evaluation
before leaving!

Certificates will be sent via email
on Monday.



Benefits of Learning Outdoors

Physical Health

Exposure to nature significantly reduces:

- Blood pressure
- Cortisol levels (stress)
- Heart rate
- Incidence of diabetes

- The association between greenspace exposure and positive health outcomes was stronger for people with low socioeconomic status.

Mental Health

Access to nature promotes

- Memory
- Competence
- Supportive social groups
- Self-discipline

Access to nature also

- Moderates stress
- Improves behaviors and symptoms of ADHD

