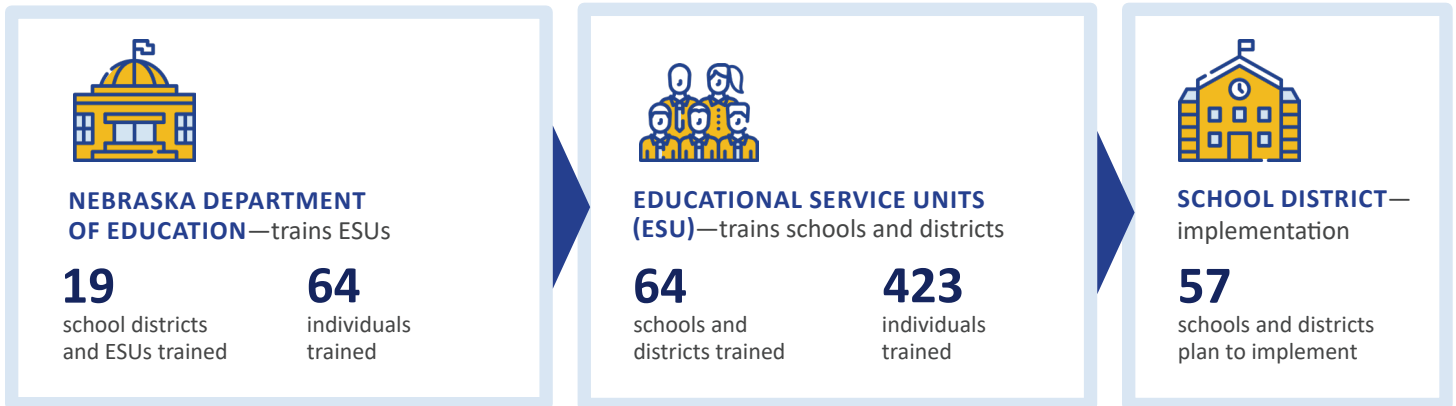




# School Mental Health Project

Responding to post-COVID student mental health needs by supporting the development of Comprehensive School Mental Health Systems (CSMHS) across Nebraska.

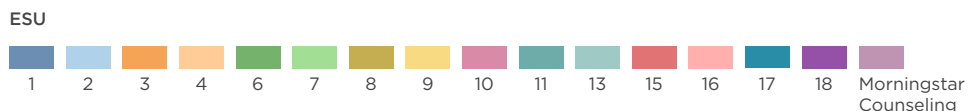
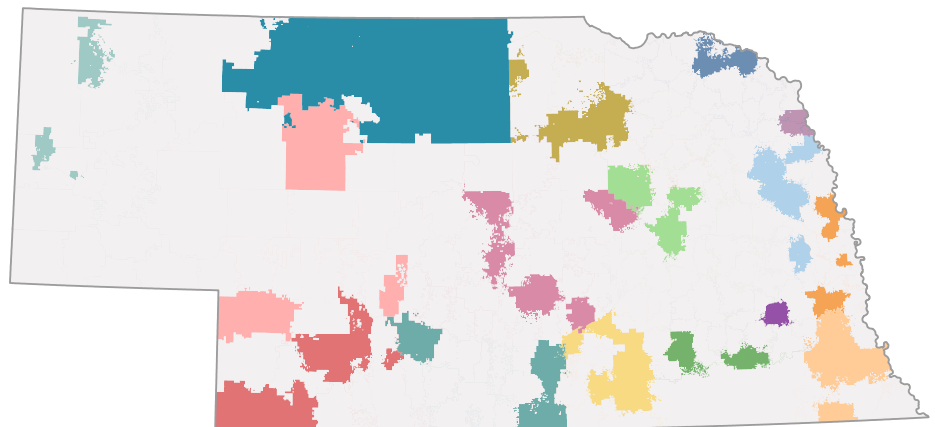
## THE PROCESS



## PARTICIPATION



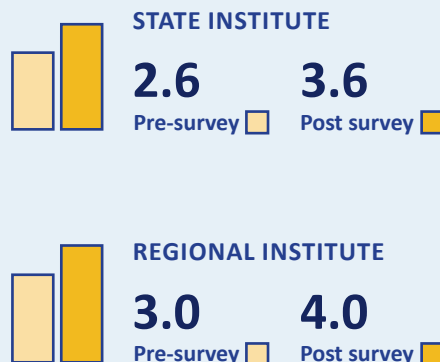
Across Nebraska, CSMHS has the potential to reach nearly **37,000 students**



## RESULTS

Participant surveys before and after the institute show an **INCREASE IN KNOWLEDGE** that was statistically significant.

Rank scale ranges from 1 (Not at all knowledgeable) to 5 (Extremely knowledgeable).



“My experience with several of the districts that participated that day, they were pretty energized and excited about some of their next steps... They saw [the CSMHS model] really connected to current works.”

- an Institute participant