



Nebraska Department of Education Mental Health

Purpose



The Nebraska Department of Education (NDE) is working to address the mental health concerns of students and school staff across the state by assisting schools in developing and maintaining Comprehensive School-Based Mental Health Systems (CSMHS).

Training and Support



The NDE partnered with the Mid-America Mental Health Technology Transfer Center.

Development



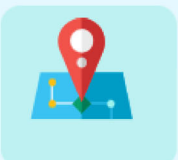
In the fall of 2021, The NDE hosted a School Mental Health Institute.

Partnerships



The NDE partnered with Morning Star Counseling to support school districts.

15 ESUs



During the Mental Health institute, 15 ESU's received guidance from MHTTC.

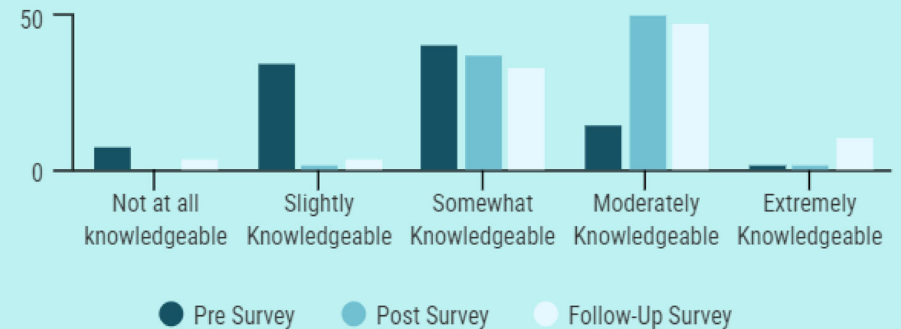


All Educational Service Units (ESUs) across Nebraska were invited to participate in the School Mental Health Project.

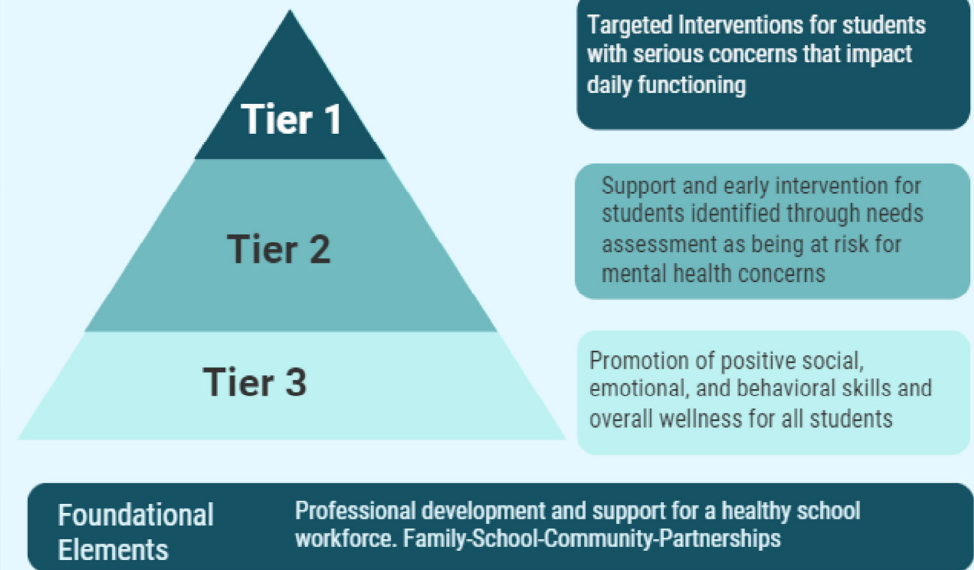


Impact

Participant Self-Reported Knowledge of CSMHS



School Mental Health Framework



Nebraska Department of Education

1 State Institute Training of Trainers

64 individuals trained from
14 ESUs and 5 School Districts



Educational Service Units

13 Regional Institutes provided by ESUs

423 participants representing
70 schools and districts trained



School District Implementation