



ESSER Impact Story: School Mental Health

**Leveraging ESSER III Funds to Support Student & Staff Mental Health
Progress Report: September 2021-August 2022**

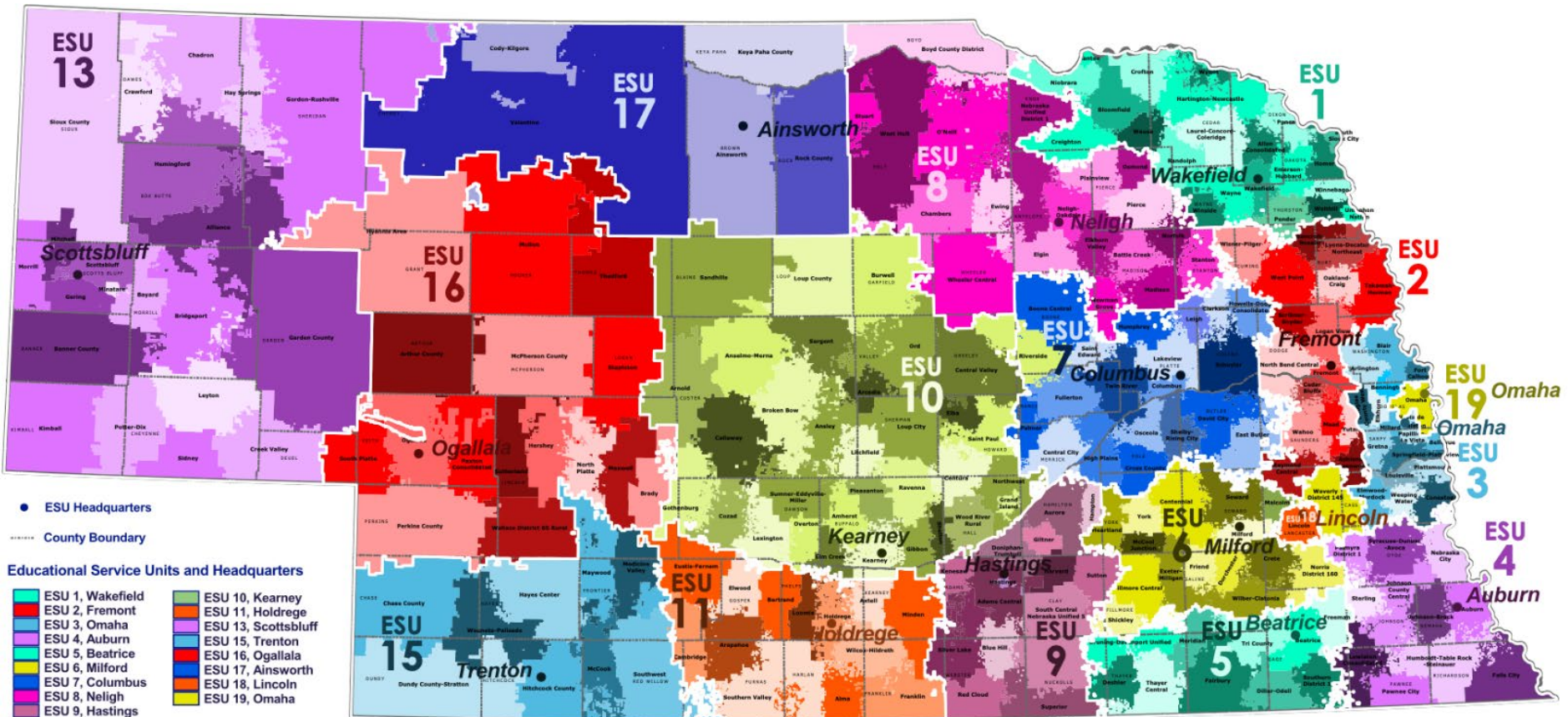
How COVID-19 affected student mental health?

- ❑ 25% of youth experiencing depressive symptoms
- ❑ 20% of youth experiencing anxiety symptoms
- ❑ In early 2021, emergency room visits for suicide attempts were 51% higher for youth compared to the same in 2019

The NDE's Top Priorities

- ❑ **Provide access to mental health services for students, staff, and communities.**
- ❑ Reimagine family and community engagement.
- ❑ Develop high-quality professional learning opportunities and bolster the teacher pipeline.
- ❑ Ensure all students have equitable access to grade-level instruction to address unfinished learning and support learning acceleration.
- ❑ Comprehensively modernize information, data, technology, and process systems

Nebraska Educational Services Units



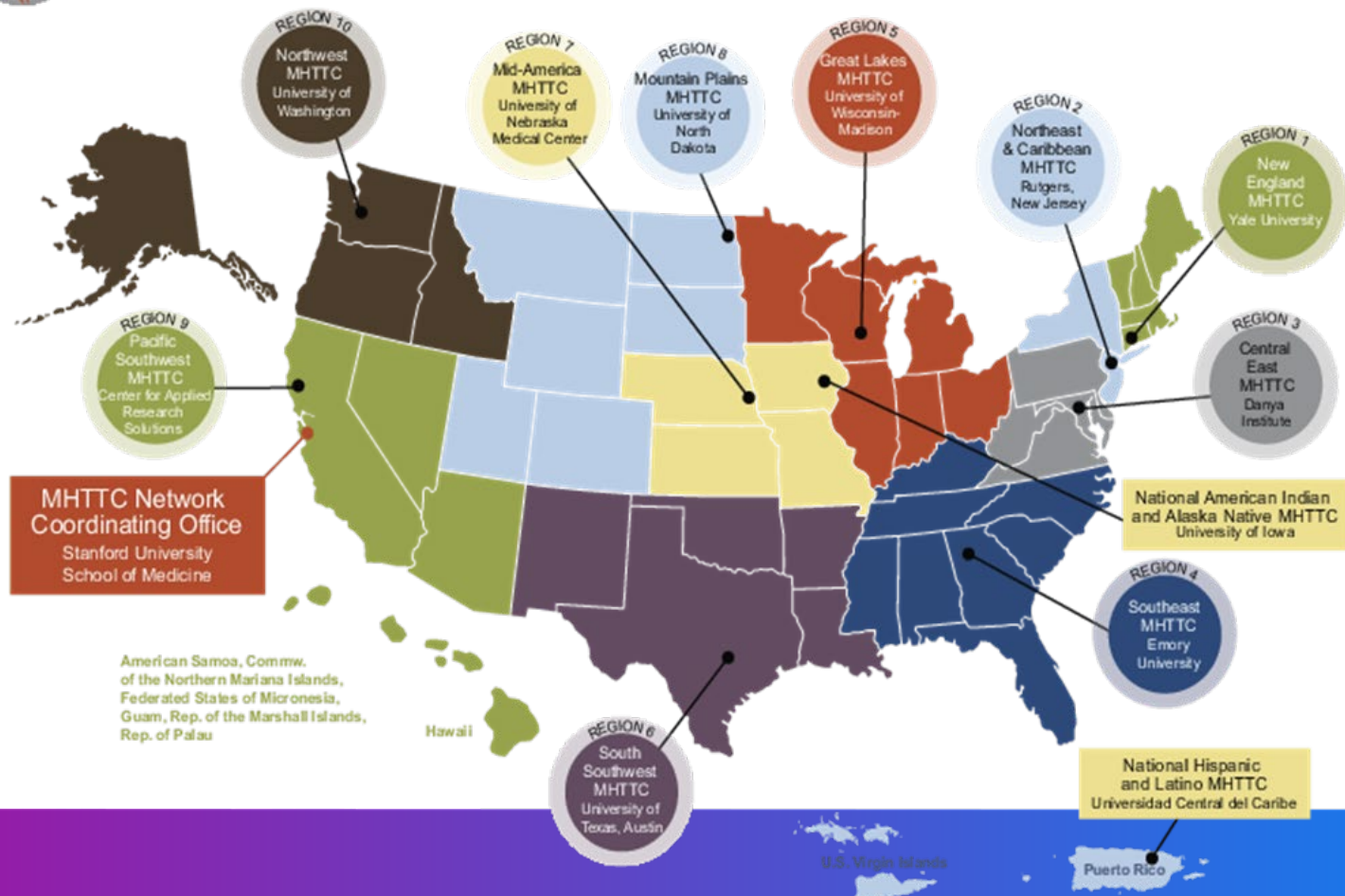


MHTTC

Mental Health Technology Transfer Center Network

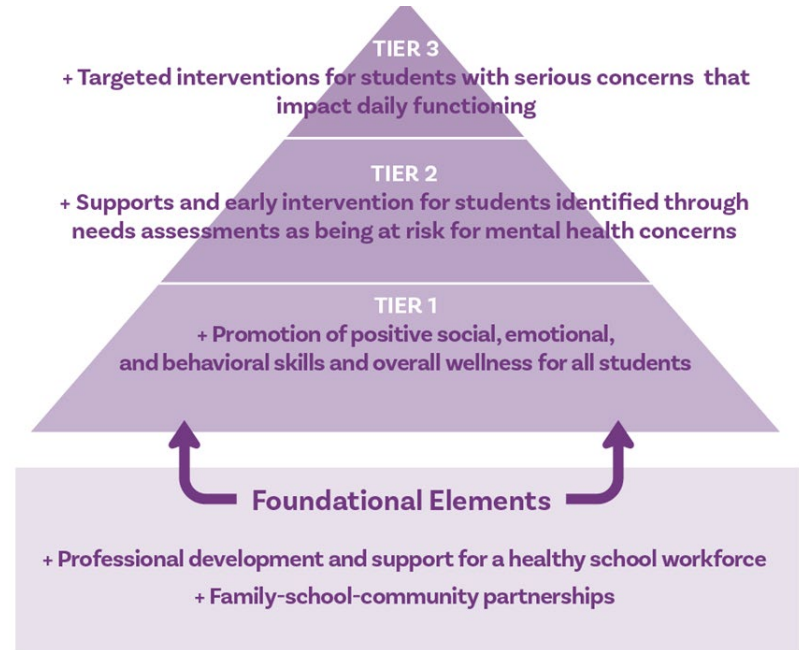
Funded by Substance Abuse and Mental Health Services Administration

MHTTC Network



School-Based Mental Health Systems

- ❑ Teaming
- ❑ Needs Assessment & Resource Mapping
- ❑ Screening
- ❑ Mental Health Promotion Services & Supports (Tier 1)
- ❑ Early Intervention and Treatment Services & Supports (Tier 2 & 3)
- ❑ Funding and Sustainability
- ❑ Impact



UNL-Public Policy Center

- ❑ **Project: School Mental Health System Implementation (SMHS; 2021-2023)**
 1. Statewide SMHS Institute for ESUs,
 2. SMHS Training and Technical Assistance provided by ESUs to school districts,
and
 3. SMHS Institute and Implementation for selected school districts.

Logic Model

Input	Output	Outcome Short-term	Outcome Medium-term	Outcome Long-term
<p>ESSER Funds NDE team Partners: <i>ESUs</i> <i>NeMTSS</i> <i>PPC</i> <i>MHTTC</i></p>	<p>NDE: -Conduct School Mental Health Institutes (SMHI) -Contract with MHTTC to conduct SMHI -Provide funding for LEAs to participant in SMHI -Contract with ESU to work as liaison between NDE and LEAs</p> <p>ESU: -Engage in work to fulfill goals of NDE contract -Provide TA to LEAs who participate in SMHI -Host School Mental Health Institutes for LEAs in service area -Establish a Statewide Community of Practice of ESUs, schools and mental health partners to support continued exploration and adoption of evidenced-based practices in school mental health and social emotional learning -Meet regularly (time frame to be determined) with the Statewide Community of Practice</p>	<p>-ESUs will receive training and Technical Assistance on how to support LEAs in developing Comprehensive School-Based Mental Health Programs -LEAs will receive guidance from their ESU and NDE around Mental Health -LEAs will receive Professional Development and/or Technical Assistance from ESU and/or NDE around Mental Health and other identified topics -LEAs will build the capacity to support the Mental Health of students and school staff -LEAs will offer mental health resources to students and school staff as needed -LEAs will offer learning opportunities for students around mental health</p>	<p>-Teachers will be better equipped to identify and respond to the mental health needs of themselves, colleagues and students -Teachers will receive training around mental health and other identified topics</p>	<p>-Students will have their mental health supported and offered resources if needed -Students will receive education around mental health and ways to support their own, and others, mental health</p>

Speakers

- ❑ Dr. John Skretta: Administrator, ESU 6
- ❑ Dr. Michele Rayburn: Director of Student Services, ESU 6
- ❑ Mr. Ray Collins, Superintendent, Wilber Clatonia
- ❑ Mr. Josh Cumpston, Superintendent, Fillmore Central
- ❑ Ms. Amber Hartsock, State Coordinator for School Mental Health Efforts, NDE

School Mental Health Plan

NDE

- Provide financial support to ESUs and LEAs
- Conduct School Mental Health Institute
- Provide TA to ESUs and LEAs

ESU

- Attend School Mental Health Institute (SMHI)
- Plan for hosting SMHI
- Host SMHI
- Provide TA for schools that attended Institute
- Gather and report data

LEA

- Develop a school mental health team consisting of 3-7 members (administrators, counsel, teacher, school nurse, parent, student, etc.)
- Attend SMHI
- Conduct a Needs Assessment (SHAPE Assessment)
- Develop Action Plan
- Implement Plan
- Participate in TA meetings
- Participate in data collection
- Report on the work progress
- Share data and success stories.

OPPORTUNITY
OF A LIFETIME



Thank You!