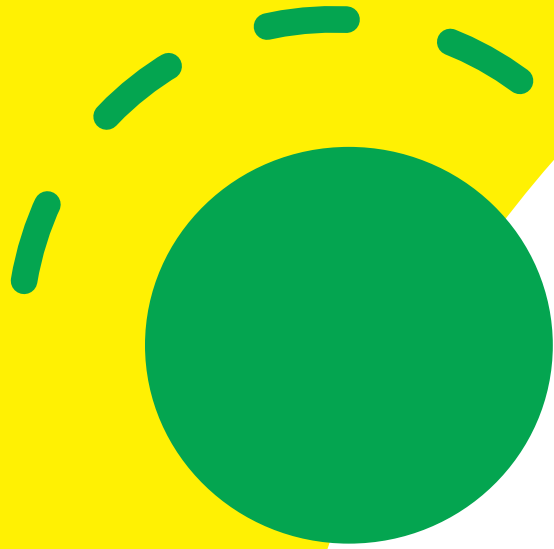


# RE • STORING NORMAL

## Empowering ALL Teachers to Enhance Academic Language through Project ASSETS

Dr. Jobi Lawrence, Consuelo Kickbusch,  
Allyson DenBeste, Anne Hubbell  
July 27, 2022





# Show of Hands

**Raise your hand if you...**

- Have ever been a teacher in a classroom with English Learners.
- Are fluent in a language other than English.
- Have traveled outside of the U.S. to a place requiring a passport.
- Are looking forward to a great year!

# Session Objectives:

- ❖ Provide an overview of Project ASSETS
  - Educator Training Opportunity
  - Family Training Opportunity
- ❖ Make Connections to Your District's Needs and Goals
  - Continuous Improvement Plan
  - NeMTSS
- ❖ Support Your District's Planning
  - Cohorts to run for the next four years
  - Opportunities for individual, small group, and whole staff participation

# Project ASSETS

- ❖ UCLA CREST Researchers, ELPA21 Program, and NDE Partnership
- ❖ US Dept of Ed Grant \$2.91 Million, 5 years (2021-2026)
- ❖ Professional Learning for 320 Educators of ELs in Nebraska
- ❖ Family Leadership Institute Partnership for 400 Families/Caregivers to Enhance Home/School Connections for English Learners and their Families

# Project ASSETS: Educators



# Project ASSETS: Educators Cohort 1

6/13/22 & 6/14/22 3:30 - 6:30 pm CT	WKSHP	Standards, Assessments, & Score Reporting
6/21/22 7:30 - 8:30 pm CT	COP	
7/19/22 7:30 - 8:30 pm CT	COP	
8/16/22 7:30 - 8:30 pm CT	COP	
9/12/22 & 9/13/22 3:30 - 6:30 pm CT	WKSHP	Differentiated Instruction for ELs
9/20/22 7:30 - 8:30 pm CT	COP	
10/18/22 7:30 - 8:30 pm CT	COP	
11/15/22 7:30 - 8:30 pm CT	COP	
12/12/22 & 12/13/22 3:30 - 6:30 pm CT	WKSHP	Differentiated Instruction for ELs (Level 2)
12/20/22 7:30 - 8:30 pm CT	COP	
1/17/23 7:30 - 8:30 pm CT	COP	
2/21/23 7:30 - 8:30 pm CT	COP	

3/13/23 & 3/14/23 3:30 - 6:30 pm CT	WKSHP	Formative Assessment for ELs (Level 1)
3/21/23 7:30 - 8:30 pm CT	COP	
4/18/23 7:30 - 8:30 pm CT	COP	
5/16/23 7:30 - 8:30 pm CT	COP	
6/12/23 & 6/13/23 3:30 - 6:30 pm CT	WKSHP	Formative Assessment for ELs (Level 2)
6/20/23 7:30 - 8:30 pm CT	COP	
7/18/23 7:30 - 8:30 pm CT	COP	
8/15/23 7:30 - 8:30 pm CT	COP	
9/11/23 & 9/12/23 3:30 - 6:30 pm CT	WKSHP	EL Family Literacy Engagement
9/19/23 7:30 - 8:30 pm CT	COP	
10/17/23 7:30 - 8:30 pm CT	COP	
11/21/23 7:30 - 8:30 pm CT	COP	

# ASSETS Overview

## Cohort Structure

4 Cohorts of 80 participants participating in an 18-month micro-credential digital badge program

18-month cycle broken into 6 topical content blocks (3 months each)

- First month of each quarter we deliver the 6-hour workshop training (can be a full day or 2 after school sessions of 3 hours each)

- 1 hour monthly synchronous Community of Practice sessions focused on applying the information learned in the topical workshop training

First cohort starts in June of 2022. Three additional cohorts, start date TBD



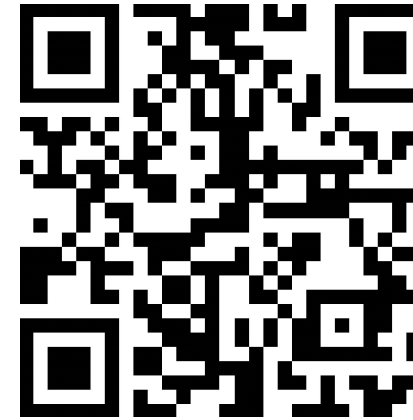


## Apply Now for Cohort 1.5!



•Scan the QR code or visit  
<https://tinyurl.com/ASSETS-Apply>

## Learn More!



•Scan the QR code or visit  
<https://tinyurl.com/ASSETSLearnMore>



# Project ASSETS: Families/Caregivers

## ❖ FLI - Family Leadership Institute

➤ 10 Modules

❖ Virtual or

❖ In-Person

- Home: Where Leadership Begins
- Past, Present, and Future
- Living in Two Worlds: Cultural/Generational Perspective
- Storytelling & Journaling: Valuing Literacy Through Family History
- Education: The Key to a Better Future
- College Field Trip: What Does Success Look Like
- Improving Family/School Relationships
- Facing Challenges at Home: Coping Strategies for Success
- Creating a Family Action Plan: Roadmaps to Success
- Celebrating Family Academic Excellence: Success as a Way of Life

WHAT IS THE FLI IN ONE WORD?



# Connections to Continuous School Improvement Plan



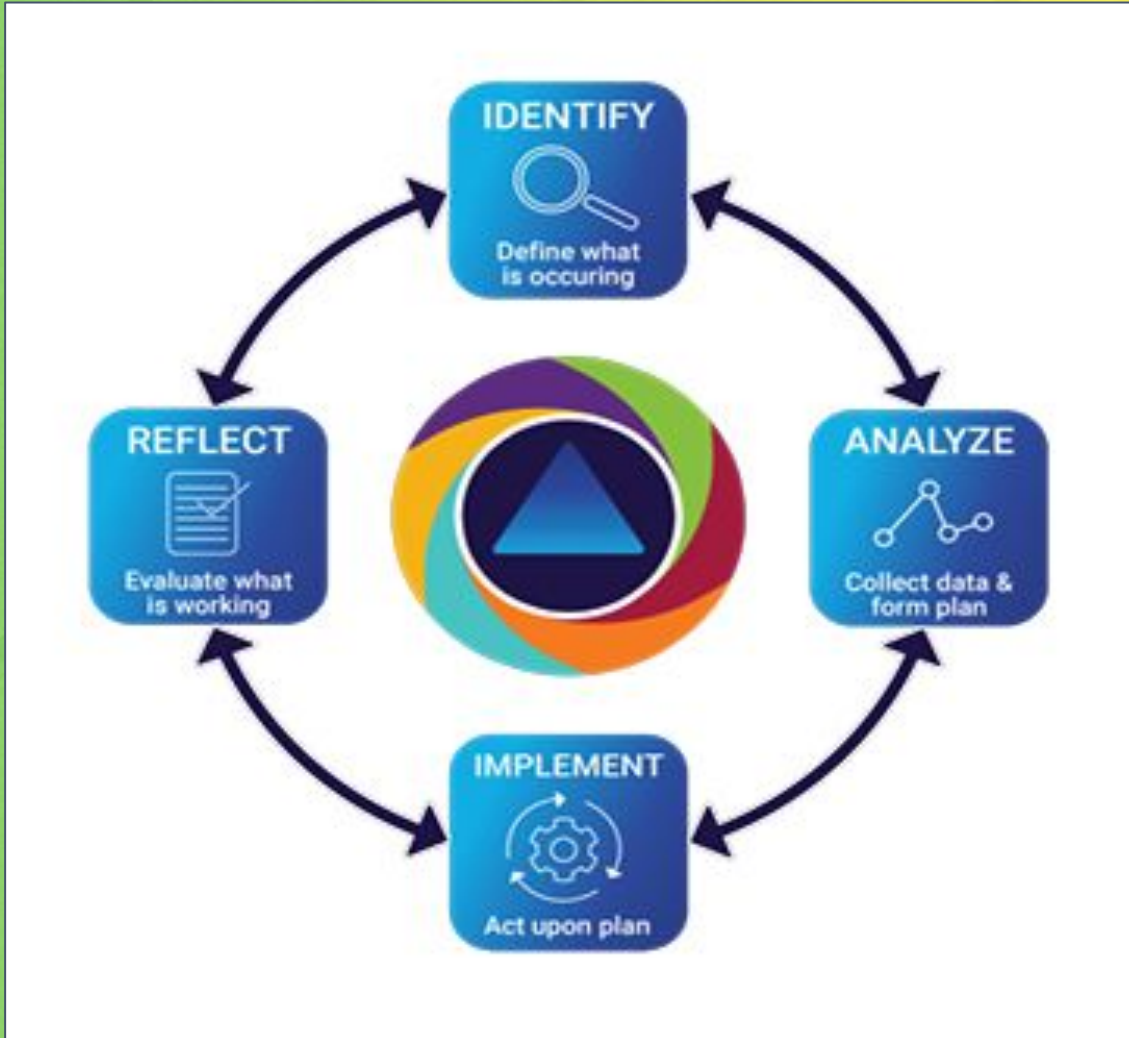
[NDE Accreditation Website](#)

# Connections to NeMTSS



[NDE NeMTSS Website](#)

[NeMTSS Framework](#)



# Future Planning....

1. What are some components of Project ASSETS that you think will benefit your district?
2. How do you think you could incorporate Projects ASSETS into your CIP?
3. What can we do to support your planning?
4. Are there barriers that we need to work together to overcome?

# Top 5 ESSA Points to Remember

1. Schoolwide Title I Building-All paras MUST meet the requirements to work with students **PRIOR to working with students!** In Targeted Title I Building-Any para funded with Title I funds MUST also meet these requirements.
2. Coding of Staff in Federal Funded Positions-All of these MUST match: NSSRS, GMS, Bookkeeping Records, and Time and Efforts. All should have the same percentage.
3. Waivers for carryover: NDE is pursuing this request with the USED. When we hear the answer, we will let you know.
4. We are updating the Monitoring Guide Checklist based on the requirements the USED gave us during our monitoring in March of 2022.
5. Unified Grant Profile must be updated before doing anything in the GMS each year. Current contact information is vital so we can reach out to the right district personnel.

# Top 5 ESSER Points to Remember

1. ESSER I allocations must be obligated by 9-30-2022.
2. Plan for Safe Return MUST be reviewed at minimum once every 6 months until 9-30-2023. Document this information. Make sure the plans are on the website and date stamp them. If changes occur with the Use of Funds, be sure to get input from stakeholders.
3. Programmatic and Fiscal Monitoring have to be done and were started during the 2021-2022 school year. Will continue this year and into the future.
4. Grant coding is important: 6996-ESSER I, 6997-ESSER II, 6998-ESSER III
5. Davis Bacon Rules DO Matter. Take a handout for specific information.



# RE • STORING NORMAL

## Contact Us!

• [Info.assets@crest.org](mailto:Info.assets@crest.org)

**Allyson DenBeste-** [allyson.denbeste@nebraska.gov](mailto:allyson.denbeste@nebraska.gov)

**Anne Hubbell-** [anne.hubbell@nebraska.gov](mailto:anne.hubbell@nebraska.gov)

