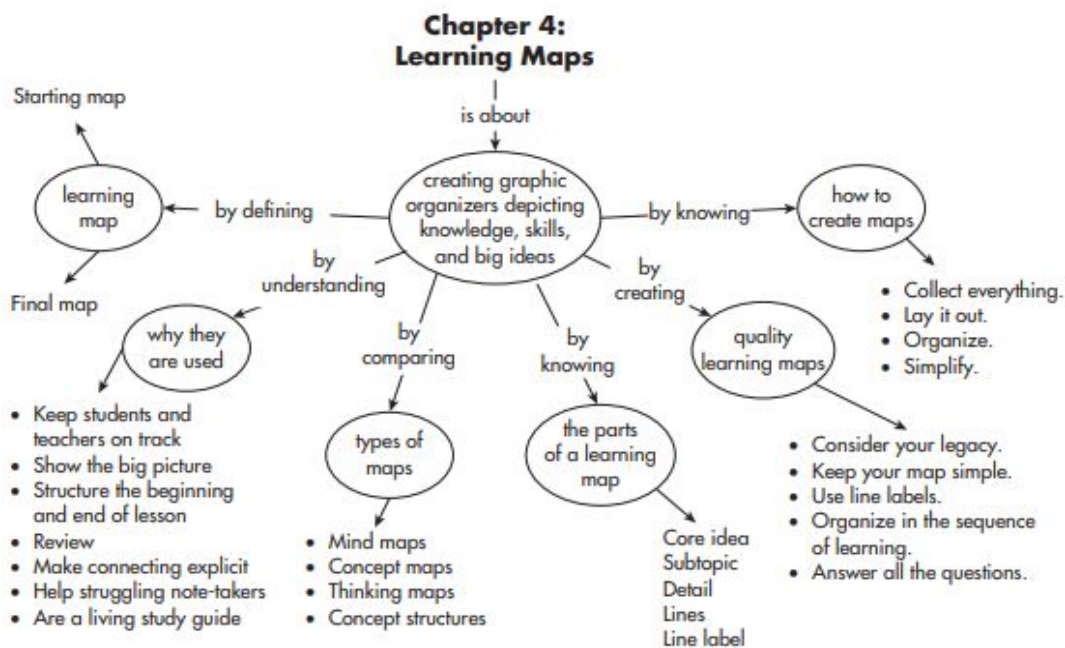




English Learners Newsletter

February 2021

Learning Maps



Jim Knight is a well-known researcher at the University of Kansas with the Center for Research on Learning. He states a number of reasons to support the use of learning maps in the classroom. Learning maps benefit English learners, as well as all students, because they show the big picture, keep students and teachers on track, and structure the beginning and ending of lessons. They are a tool for repeated review and they are a living study guide. They help students make connections through visualization and they support students who might struggle with note-taking. Learning maps make a huge difference when students use them routinely. Learning maps need to answer the guiding questions, be organized in the sequence of the learning unit, show connections through the linking words, and fit on one page. Teachers can increase the quality of their learning maps by using clear and meaningful linking words to connect ideas. Some examples include through, including, by analyzing, defined by, grounded in, caused by and organized by.

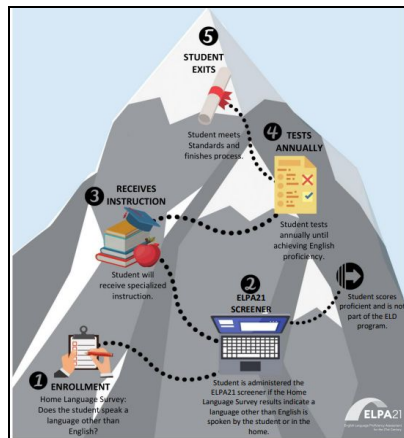
Mapping Mastery by Mike Field. Retrieved from https://sites.google.com/a/loy.org/la-online-pd/home/plc_2014-15/iteam-topics/learning-maps
Planning Learning Maps by Jim Knight. Retrieved from https://www.instructionalcoaching.com/downloads/pdfs/HII_MM_LearningMaps.pdf

Additional EL Resources

[ESL-BITS](#) - check it out! Lots of short stories/novels to listen and read.

UNL [ICMEE](#) International Coalition for Multilingual Education and Equity

- Summer Professional Learning Offerings
- [eWorkshops](#)
- [Learning Packets](#)



ELPA21 Summative Assessment - 2021 Testing Window

February 8 - April 2 (Note: Window extended 2 weeks)

[NE Portal](#) for All Announcements and Resources, [Updated ELPA21 Summative](#)

Test Administrators - [General Information](#)

Test Administrators - [Training Modules](#)

[Technology Coordinators](#)

NDE's EL Zoom office hours (central time) for anyone who has questions or would like support. Feel free to pop in as your schedule permits. Zoom link.:

<https://educationne.zoom.us/j/4024714694>

- Wednesday, February 3rd 10-11
- Wednesday, February 3rd 3-4

Task Name	Start Date	End Date
ELPA21 Summative Test Window (2 week extension)	2/8/21	4/2/21
Additional materials ordering	1/19/21	3/26/21
Non-participation codes window	2/22/21	4/16/21
Final day for returning paper/braille materials	4/2/21	4/2/21
Student data file to state	5/7/21	5/7/21
Reporting Data UAT – ELPA21 Summative	5/12/21	5/13/21
Reporting Go Live – ELPA21 Summative	5/14/21	5/14/21

Questions

Please contact us with any questions or concerns regarding your EL students.



Allyson Olson - Title III Director, ELPA 21 Coordinator

allyson.olson@nebraska.gov 402 471-4694

Anne Hubbell - English Learner Specialist

anne.hubbell@nebraska.gov 402 471-2451