



Important Update Regarding COVID-19

Date: November 10th, 2020

Time: 11:00 am CST

Agenda

- ❖ Welcome from Steve Milliken, Deputy Commissioner
- ❖ Governor's Update
- ❖ DHHS Update
- ❖ NDE Update
- ❖ Wrap- UP

Governor's Update

- NEW DHM
- Effective on Wednesday at 12:01 a.m.

COVID-19 is spreading in Nebraska

Here's what you can do to stay safe and stop the spread:

Avoid the Three Cs

1. Crowded Places



Avoid gathering in groups where you can't maintain 6-feet distance from others.

2. Close Contact



Wear a mask or maintain 6-feet distance when you're with people you don't live with.

3. Confined Spaces



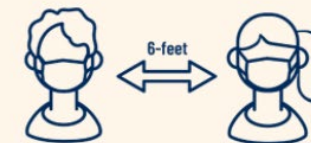
Avoid enclosed spaces with poor ventilation.

AT WORK, AT SCHOOL, AT SMALL AND LARGE GATHERINGS, AND EVERYWHERE YOU GO

WHEN YOU SPEND MORE THAN 15 MINUTES WITH OTHER PEOPLE ...



Avoid crowded places and limit time in enclosed spaces.



Wear a mask over your nose and mouth or maintain 6-feet distance from people you don't live with.

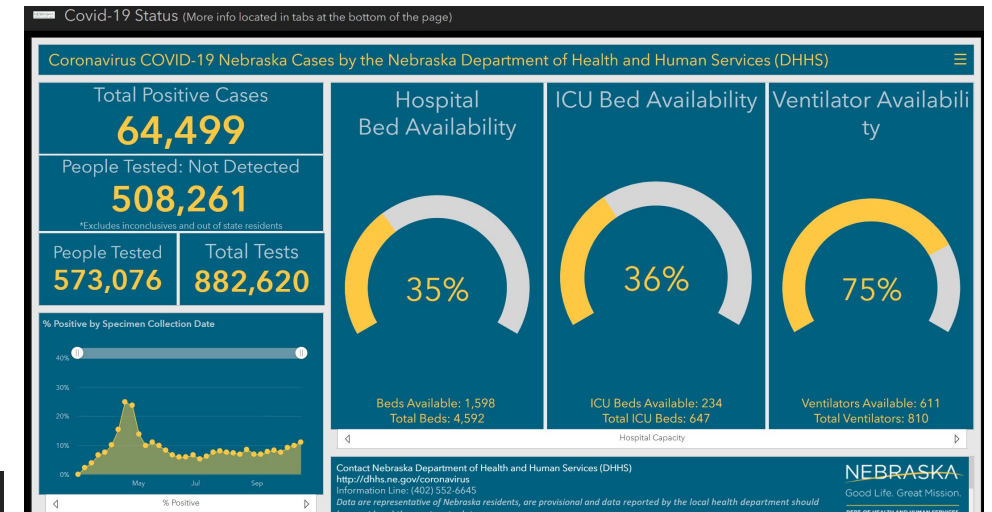
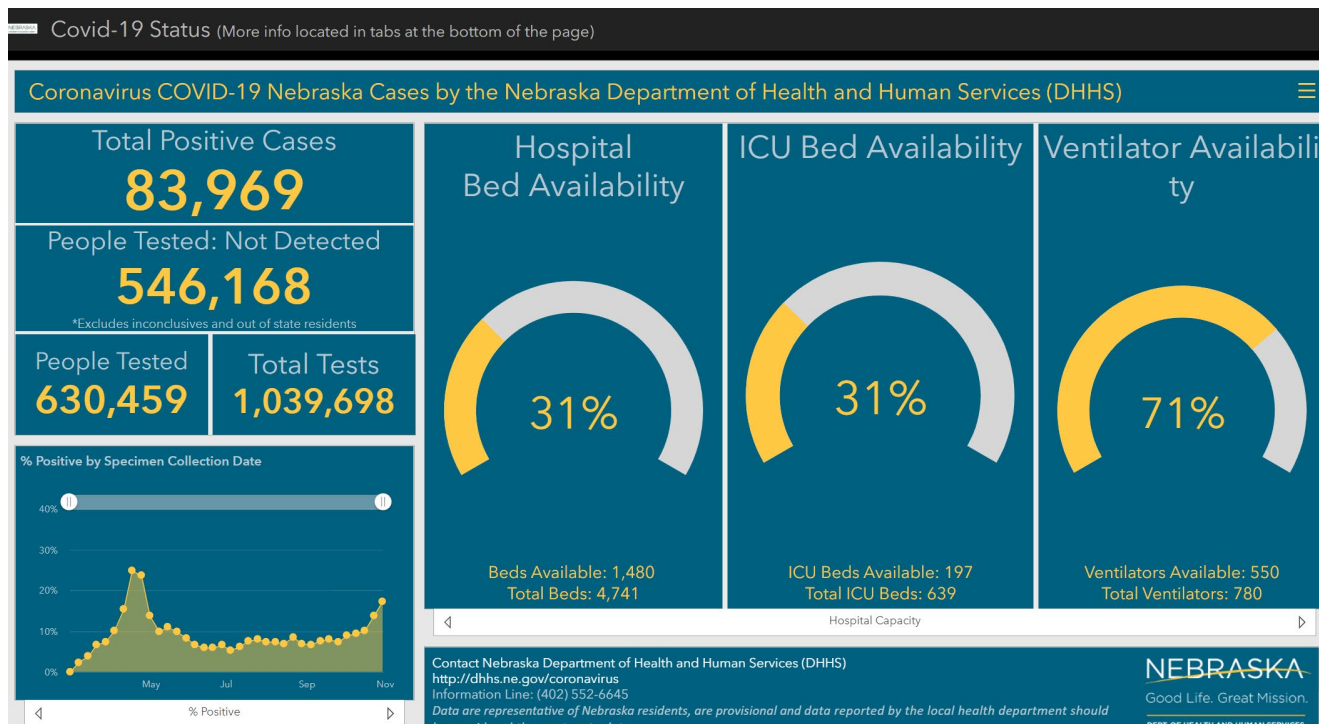


Wash your hands often.

DHHS Update

October 26, 2020

November 9, 2020



- ❖ TestNE remains available for routine testing. Turnaround time is now < 2 days
- ❖ Schools with outbreaks can request extra testing help through the LHD
- ❖ DHHS will work with the LHD to make it happen
- ❖ Healthcare facilities are now receiving BinaxNOW, and have been asked to provide priority for K12 students

NDE Update

- ❖ Commissioner's Guidance Local Substitute Permits
- ❖ Reporting District Learning Status
- ❖ The Statewide Public Information Campaign Efforts

Commissioner's Guidance –

Local Substitute Permits

www.launchne.com

- Local Substitute Teaching Permit – pending applications
 - Application, Fee, Letter from School System
 - Public lookup – application will show as “pending”
 - Public lookup - <https://online.nedoe.org/#/verifylicense>
- Local Substitute Teaching Permit – additional days
 - Form was emailed to Superintendents October 27, 2020
 - Option to extend all local substitute permits with one form
 - No maximum number of days for 2020/21 school year

Reporting District Learning Status



LAUNCH NEBRASKA



Select Language ▼

[HOME](#) [COMMISSIONER'S GUIDANCE](#) [LEADERSHIP & PLANNING ▼](#) [CONDITIONS FOR LEARNING ▼](#) [CONTINUITY OF LEARNING ▼](#) [LAUNCH TOOLKIT](#)

[PROFESSIONAL LEARNING & RESOURCES](#) [PARTNER PERSPECTIVES](#) [CONTACT](#)

DISTRICT STATUS



Toggle Contrast

if your status has changed multiple times, please submit this form once per each status change, setting the effective date to the date when that change took effect.

District Name or ID

SEARCH

Use this field to search for your district by name or agency id.

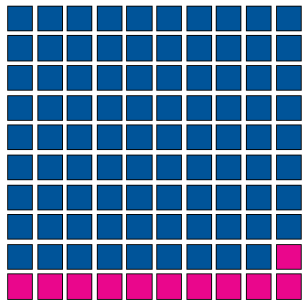
Reporting District Learning Status

As of 11-9-2020

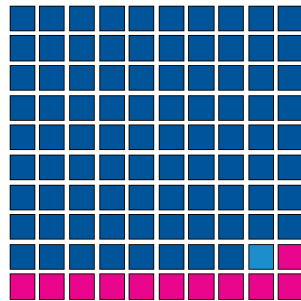
Use the slider above to view historical data

CLASSROOM LEARNING MODE

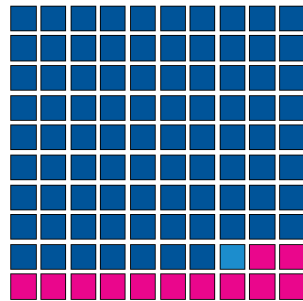
■ In School ■ Remote ■ Split



Elementary Schools

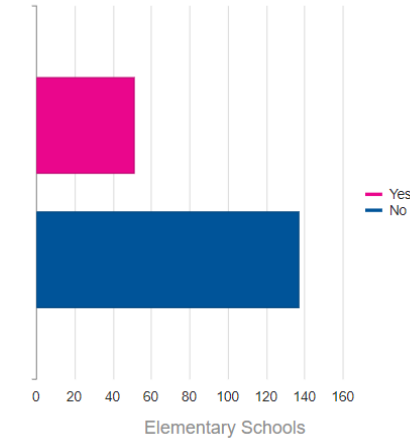


Middle Schools

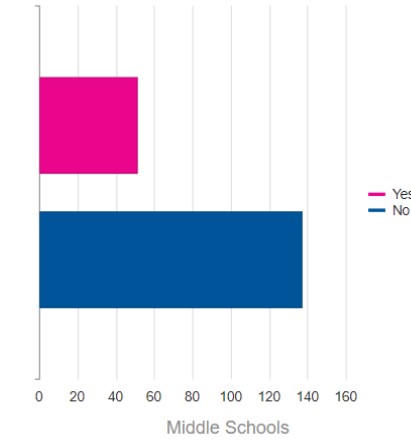


High Schools

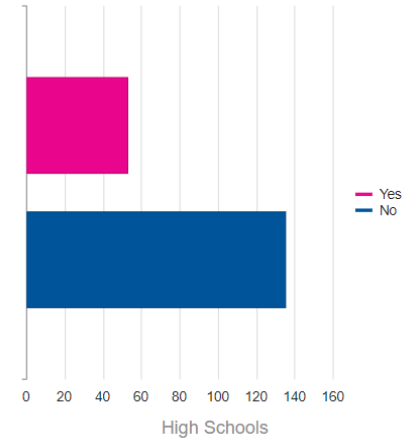
WERE FAMILIES/CAREGIVERS ABLE TO SELECT A FULLY REMOTE OPTION?



10691 Elementary school students using the remote learning option



6550 Middle school students using the remote learning option



10190 High school students using the remote learning option

Public Information Campaign

- ❖ Statewide health and safety messaging
- ❖ Focus on health behavior change
- ❖ Address masking, the 3 C's, and awareness to comply with LHD protocols
- ❖ In collaborations with the state and local leaders
- ❖ Launch in the next two weeks all over the state

Wrap- UP

- ❖ As always, visit the www.education.ne.gov/publichealth page for additional information.
- ❖ Staff at the NDE are working to address key FAQs and other topics as we know them.
- ❖ Please use below link and submit your questions and suggestions for next zoom call by Friday, December 4th, 2020
<https://forms.gle/64oTH8XQLFsGNwJ96>
- ❖ Next call- December 8th, 2020



Thank you!