



## **Important Update Regarding COVID-19**

**Date: July 20, 2020**

**Time: 4:00 pm CST**

# Agenda

---

- ❖ **Welcome from the Commissioner**
  - ❖ **Theme today around Return to School 2020-2021**
- ❖ Initial Comments from the Governor
- ❖ Launch Nebraska – Updates
  - ❖ Health Guidance- Lane Carr
- ❖ Comments and Thoughts from the Field
  - ❖ Grand Island Public Schools- Dr. Grover
  - ❖ Nelson Mandela School- Dr. Toohey
  - ❖ ORD Public Schools- Dr. Nebesniak
  - ❖ Riverside Public Schools- Ms. Kaczor
- ❖ ESU Updates
- ❖ NDE Highlights



# Return to School 2020-2021

---



- Workgroup establishment: Governor's office, DHHS, UNMC, LHD's and other partners.
- 244 districts with 244 different contexts. **One size does not fit all.**
- Protocols in place will be dependent on each district's individual risk assessment completed in partnership with local public health.
- Flexibility and preparation are going to be key.

# Agenda

---

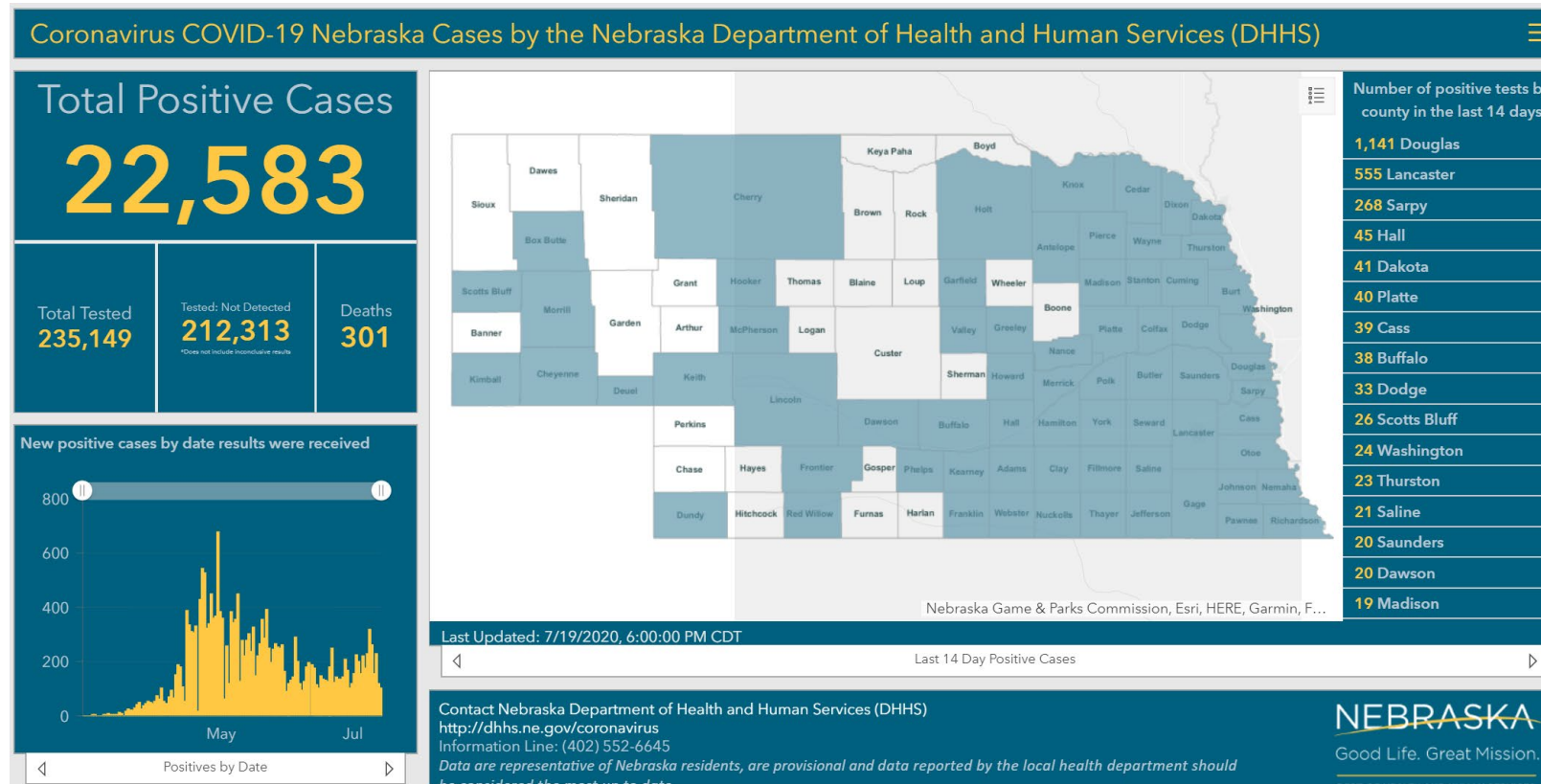
- ❖ Welcome from the Commissioner
  - ❖ Theme today around Return to School 2020-2021
- ❖ **Initial Comments from the Governor**
- ❖ Launch Nebraska – Updates
  - ❖ Health Guidance- Lane Carr
- ❖ Comments and Thoughts from the Field
  - ❖ Grand Island Public Schools- Dr. Grover
  - ❖ Nelson Mandela School- Dr. Toohey
  - ❖ ORD Public Schools- Dr. Nebesniak
  - ❖ Riverside Public Schools- Ms. Kaczor
- ❖ ESU Updates
- ❖ NDE Highlights



# Agenda

❖ Welcome from the Commissioner

❖ Initial Comments from the Governor



# Agenda

---

- ❖ Welcome from the Commissioner
  - ❖ Theme today around Return to School 2020-2021
- ❖ Initial Comments from the Governor
- ❖ **Launch Nebraska – Updates**
  - ❖ **Health Guidance- Lane Carr**
- ❖ Comments and Thoughts from the Field
  - ❖ Grand Island Public Schools- Dr. Grover
  - ❖ Nelson Mandela School- Dr. Toohey
  - ❖ ORD Public Schools- Dr. Nebesniak
  - ❖ Riverside Public Schools- Ms. Kaczor
- ❖ ESU Updates
- ❖ NDE Highlights



# Return to School Plan-Guiding Principles

---

- **Transparent.** We will share what we know and what we don't know. We will be clear about what we can control and what is outside of our control.
- **Equitable.** We will center decisions on what is best for all students, families, and educators, especially those most impacted by educational inequities and COVID-19.
- **Listen.** We will bring together diverse stakeholders and experts to a) understand the realities on the ground and b) surface creative solutions.
- **Safety first.** We will leverage science, data, and public health leadership to inform the choices we make.
- **Decisive.** Given the size and scope of the challenge, we must move deliberately and make tough choices. We will make mistakes, and we will adapt quickly as variables on the ground change.



# Conditions for Learning



The **Supporting Considerations** below are designed to assist in the preparation and implementation of strategies to ensure students, teachers, and staff stay safe as they return to school.

FACILITIES Supporting Considerations

HEALTH Supporting Considerations

MENTAL HEALTH & SEL Supporting Considerations

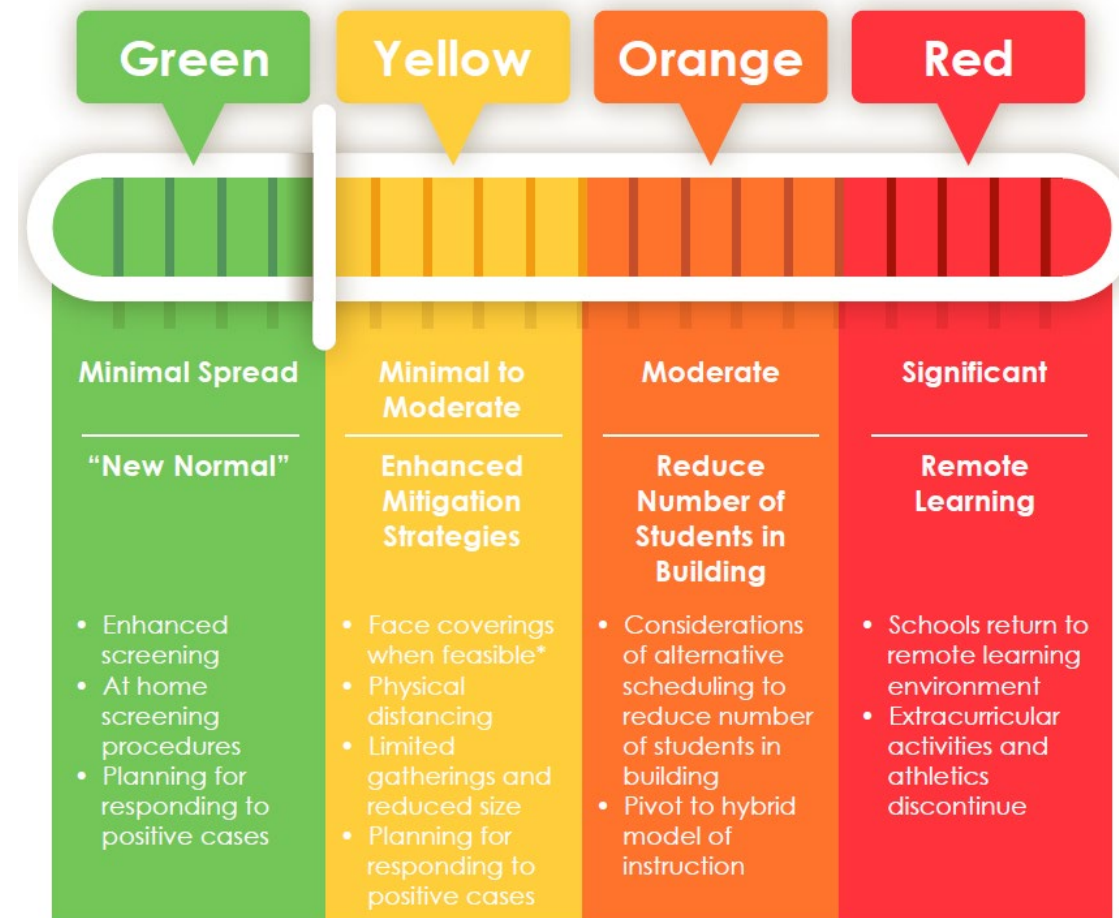
NUTRITION SERVICES Supporting Considerations

PHYSICAL ACTIVITY & ATHLETICS Supporting Considerations



# Leveled Guidance

- Scenario 1: Minimal Community Spread (Green)
- Scenario 2: Minimal to Moderate Community Spread (Yellow/Orange)
- Scenario 3: Significant Community Spread (Red)



# Agenda

---

- ❖ Welcome from the Commissioner
  - ❖ Theme today around Return to School 2020-2021
- ❖ Initial Comments from the Governor
- ❖ Launch Nebraska – Updates
  - ❖ Health Guidance- Lane Carr
- ❖ Comments and Thoughts from the Field
  - ❖ Grand Island Public Schools- Dr. Grover
  - ❖ Nelson Mandela School- Dr. Toohey
  - ❖ ORD Public Schools- Dr. Nebesniak
  - ❖ Riverside Public Schools- Ms. Kaczor
- ❖ ESU Updates
- ❖ NDE Highlights



# Return to School 2020-2021

---

❖ Share essential actions to ensure operations support a safe and organized transition back to classroom instruction.

❖ Joined by:

❖ Dr. Grover- Grand Island Public Schools

❖ Dr. Toohey- Nelson Mandela School

❖ Dr. Nebesniak- ORD Public Schools

❖ Ms. Kaczor-Riverside Public Schools

GIPS

REIMAGINED

# BELIEFS

- **Safety precautions are critical** as we are faced with new realities and circumstances for our district and our community.
- Schools play a major role in the **economic and workforce vitality** of our community.
- Students and staff need **social emotional learning** supports.
- Each student should have access to **high quality instruction** no matter the environment or modality. Systemic supports provide equitable access and mastery of grade-level standards.
- **Parents and adults** are a major lever in student success.

# BELIEFS

- Kids need **positive relationships and connections** with peers and adults to be successful. Staff members need interactions with students and school family.
- Technology offers opportunities for **innovation, flexibility and authentic learning** options. Virtual platforms have proven to be more valuable for some students.
- **Clarity and coherent systems** are critical to achieve our goals.
- We must assess the needs, strengths, skills and talents of our staff to assign them to the **best possible personal and professional placement**.
- Our **GIPS Profile of a Graduate** is our North Star.

# Research and Collaboration

**LAUNCH  
NEBRASKA**

NEBRASKA.GOV

American Academy  
of Pediatrics



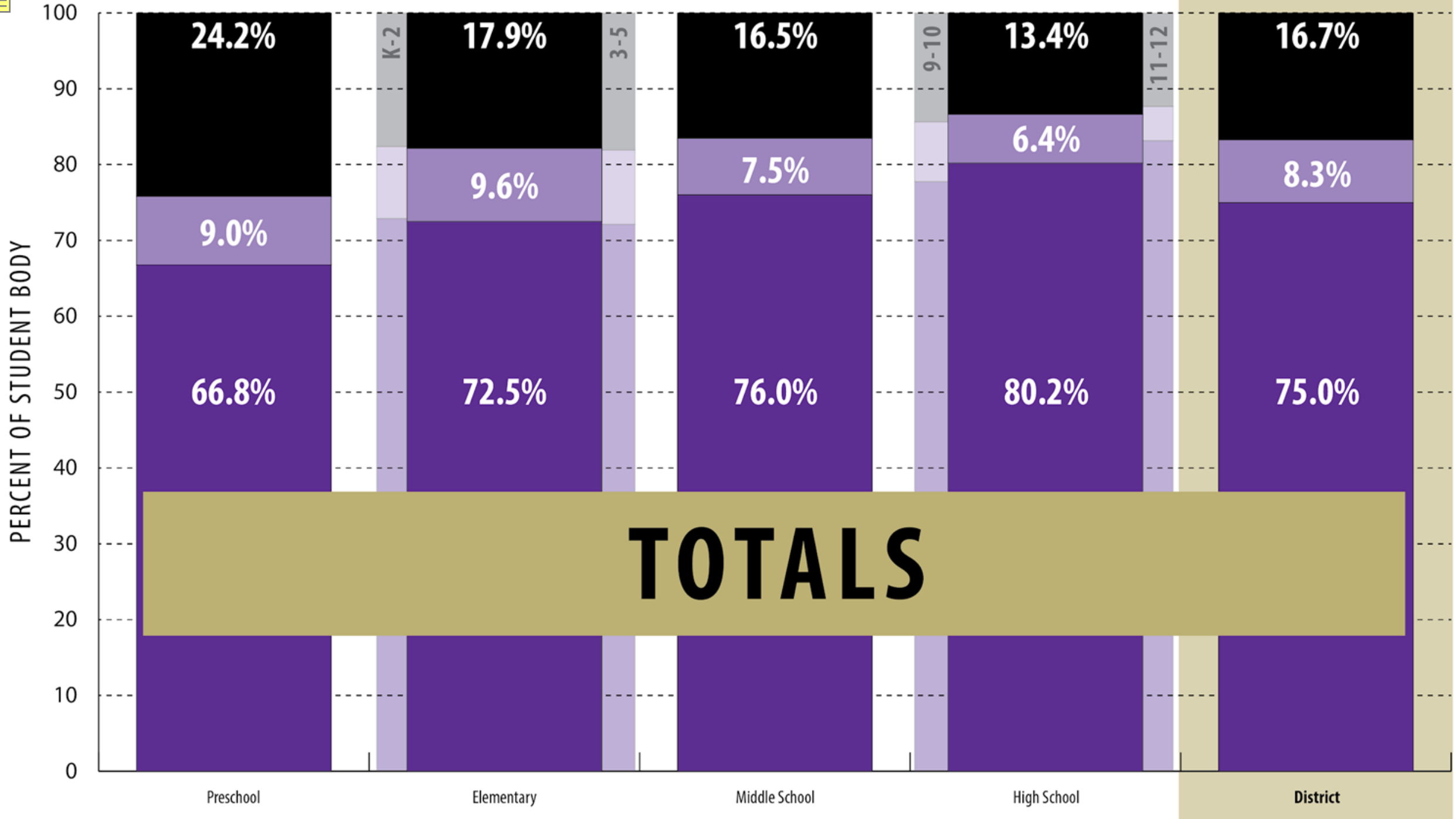
DEDICATED TO THE HEALTH OF ALL CHILDREN®

Central  
District  
Health Department  
HALL • HAMILTON • MERRICK



GRAND ISLAND  
*Better & Stronger*  
**TOGETHER**



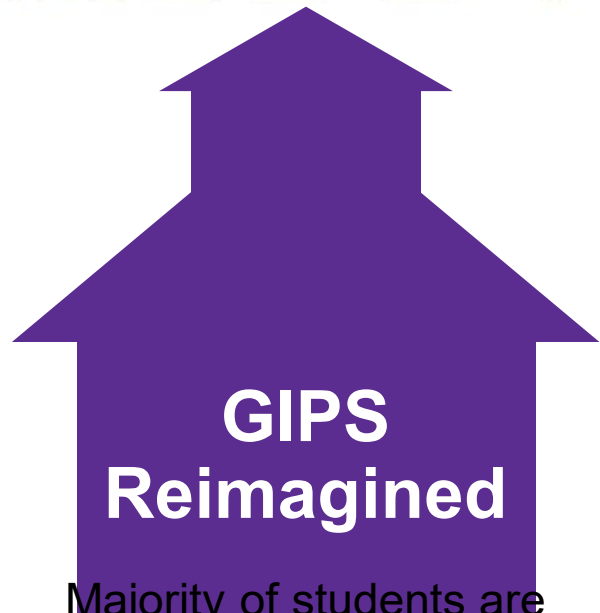




**Opening  
our  
School  
Buildings  
During  
COVID-19**



# MODELS FOR 2020-2021



Majority of students are served onsite with the option of online as determined by district guidelines



Specific predetermined programs and services will be onsite, others will be served remotely via eLearning



Due to restrictions, all students are taught via eLearning

# KEY COMPONENTS

1. Group students to **minimize exposure** and allow for contact tracing.
2. Manage classroom environments to **maximize social distancing**.
3. Require **face coverings** by all.
4. Conduct **daily screenings** and temperature checks.
5. Provide aggressive **hand washing** schedules throughout the school day.
6. **Enhance cleaning protocols** across the buildings and grounds

# TRANSPORTATION

## **Employee Protocol-**

- Each employee will be required to wash hands, take temperature, answer questions regarding health and possible symptoms of Covid-19.
- All Drivers and Para's will be required to wear company provided masks and gloves.
- All buses will have hand sanitizer for drivers, paras and students.

## **Parents and Students- STUDENTS MUST REGISTER FOR TRANSPORTATION**

- Parents will be expected to screen their children before sending to school.
- Students must practice social distancing at the bus top and wear masks.
- Students will have assigned seats.
- GIPS will run double routes in order to increase social distancing.

# TECHNOLOGY

Television White Space (TVWS) - Limitations on equipment and capacity - GONE!

**GIPS Private LTE Network** - Is coming! But, what's a Private LTE Network?

LTE is the latest generation of cellular technology. LTE 4G data cellular the fastest broadband network large area of broadcast coverage averages 2 miles radius w/EBS 7+ miles capable.

End user equipment used is a standard MiFi Device (i.e. WiFi Hotspot)

GIPS outdoor roof mounted antennas = Best Signal Strength

# VIRTUAL SCHOOL

- **School experience requested by parents for students to utilize online even when the district has students on campus.**
- **Virtual School could include students and teachers from across the district.**
- **Calendar and schedule will mirror onsite learning to greatest extent possible.**

# VIRTUAL SCHOOL

One or more of approaches below:

- **Zoom classes** with GIPS Virtual teacher
- **Distance Learning** as part of on-campus live class
- **Edmentum** online classes

Daily expectation of **attendance** and **engagement**.

# GIPS SELECT

- K-12 Newcomers and those in Sheltered Instruction (Limited English Language Proficiency)
- Students who require highly modified experiences as defined in an IEP
- Grade 11-12 high school students in hands-on Pathway classes needed for college/career readiness standards
- Preschool, kindergarten and first grade students
- Other students identified by staff as needed
- Students of essential GIPS staff as needed





# GIPS SELECT DIFFERENCES

- All students coming to campus will go through a screening process every day as they enter their building, including having temperature taken.
- Social distancing measures will be increased.
- Students will be in smaller groups while at school.
- Preschool students will be split into Monday/Wednesday and Tuesday/Thursday groups to keep classroom sizes smaller.
- Calendar change.

**GIPS**

**REMOTE**

# GIPS REMOTE

Based on conditions and restrictions, this model would be in place if no students or too low of a number of programs or services could be provided onsite. All students would receive services remotely via eLearning.

All buildings and grounds will be closed to the public.



# GIPS REIMAGINED

See the entire plan at  
**[www.gips.org/reimagined](http://www.gips.org/reimagined)**

# Return to School 2020-2021

---

❖ Share essential actions to ensure operations support a safe and organized transition back to classroom instruction.

❖ Joined by:

❖ Dr. Grover- Grand Island Public Schools

❖ Dr. Toohey- Nelson Mandela School

❖ Dr. Nebesniak- ORD Public Schools

❖ Ms. Kaczor-Riverside Public Schools

# Agenda

---

- ❖ Welcome from the Commissioner
  - ❖ Theme today around Return to School 2020-2021
- ❖ Initial Comments from the Governor
- ❖ Launch Nebraska – Updates
  - ❖ Health Guidance- Lane Carr
- ❖ Comments and Thoughts from the Field
  - ❖ Grand Island Public Schools- Dr. Grover
  - ❖ Nelson Mandela School- Dr. Toohey
  - ❖ ORD Public Schools- Dr. Nebesniak
  - ❖ Riverside Public Schools- Ms. Kaczor
- ❖ ESU Updates
- ❖ NDE Highlights

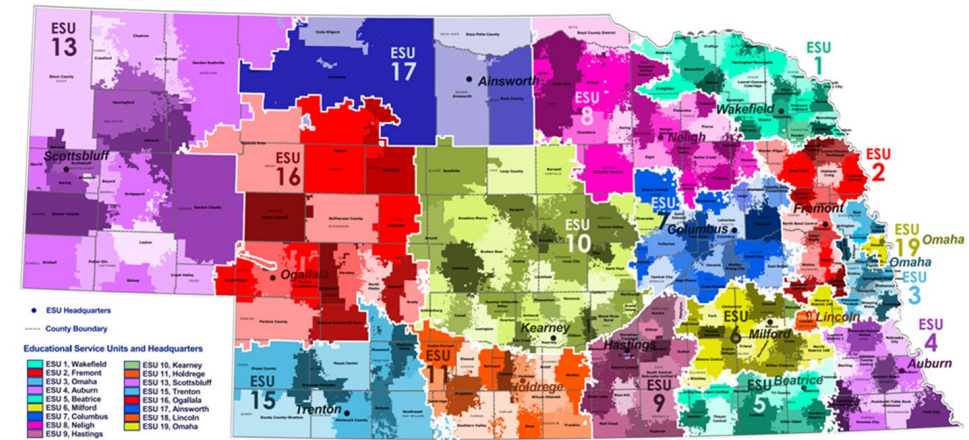


# ESU Update

- Update regarding PPE
- Joined by Dr. Melissa Wheelock



## 2017-18 Nebraska Public School Districts and Nebraska Educational Service Units



# Agenda

---

- ❖ Welcome from the Commissioner
  - ❖ Theme today around Return to School 2020-2021
- ❖ Initial Comments from the Governor
- ❖ Launch Nebraska – Updates
  - ❖ Health Guidance- Lane Carr
- ❖ Comments and Thoughts from the Field
  - ❖ Grand Island Public Schools- Dr. Grover
  - ❖ Nelson Mandela School- Dr. Toohey
  - ❖ ORD Public Schools- Dr. Nebesniak
  - ❖ Riverside Public Schools- Ms. Kaczor
- ❖ ESU Updates
- ❖ NDE Highlights





# NDE Highlights

---

- ❖ School Safety Considerations- Dr. Jolene Palmer
  - ❖ Fire Drill Requirements
  - ❖ Regulations for Hand Sanitizers
  
- ❖ Administrators' Days NDE Day Conference:
  - ❖ Theme: Disruption and Innovation
  - ❖ Wednesday, July 29, 2020 from 8:45 am - 4:00 pm

# Wrap- UP

---

- Each week we will try to address some of the questions that have surfaced through the ESU/regional conversations and other forums.
- As always, visit the [www.education.ne.gov/publichealth](http://www.education.ne.gov/publichealth) page for additional information.
- Staff at the NDE are working to address key FAQs and other topics as we know them.
- Please continue to submit your questions to <https://www.education.ne.gov/publichealth/contact/>



**Thank you!**