



Important Update Regarding COVID-19

Date: June 8, 2020

Time: 4:00 pm CST

Agenda

- ❖ **Welcome from the Commissioner**
- ❖ Initial Comments from the Governor
- ❖ Assessing Risk at a Community/School Level
- ❖ Launch Nebraska - Updates
 - ❖ Leadership and Planning
 - ❖ Conditions for Learning
 - ❖ Continuity of Learning
- ❖ CARES Act Update

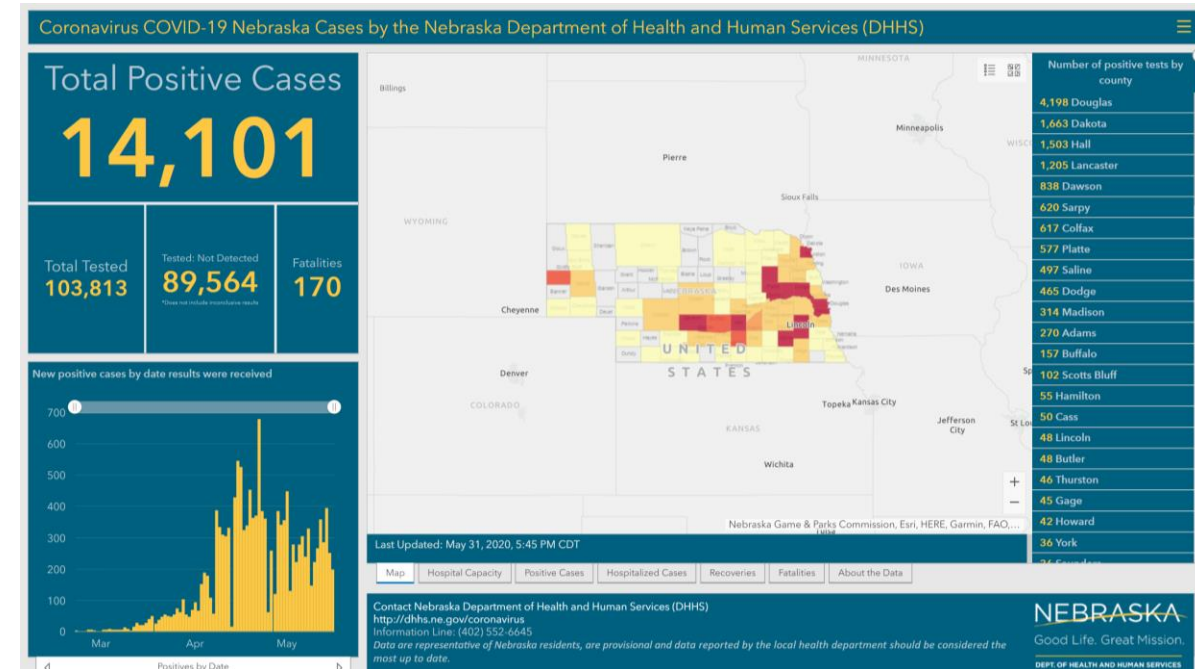
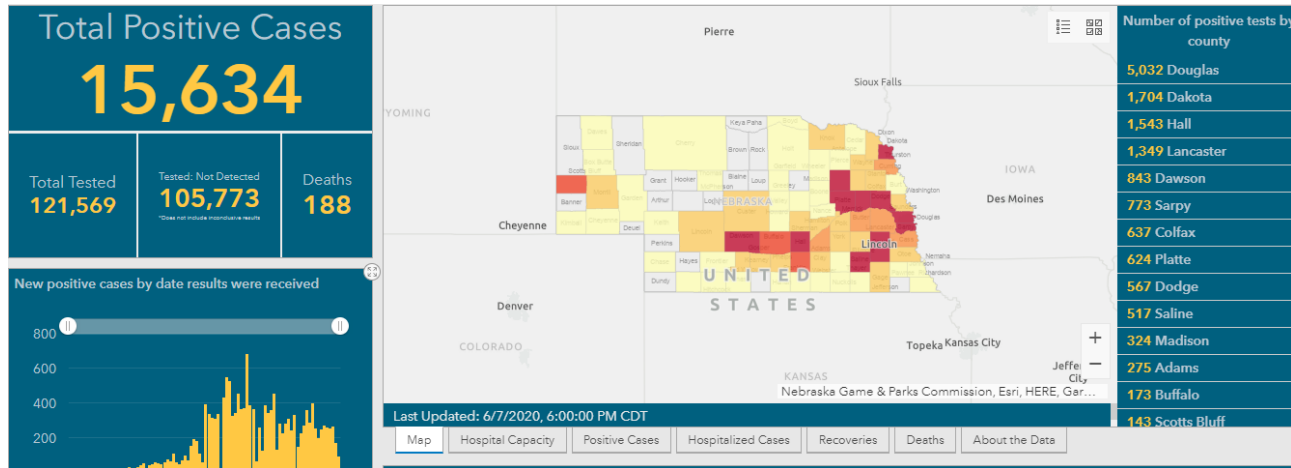
Governor's Comments

❖ Welcome from the Commissioner

❖ Initial Comments from the Governor

Monday, June 1, 2020

Monday, June 8, 2020



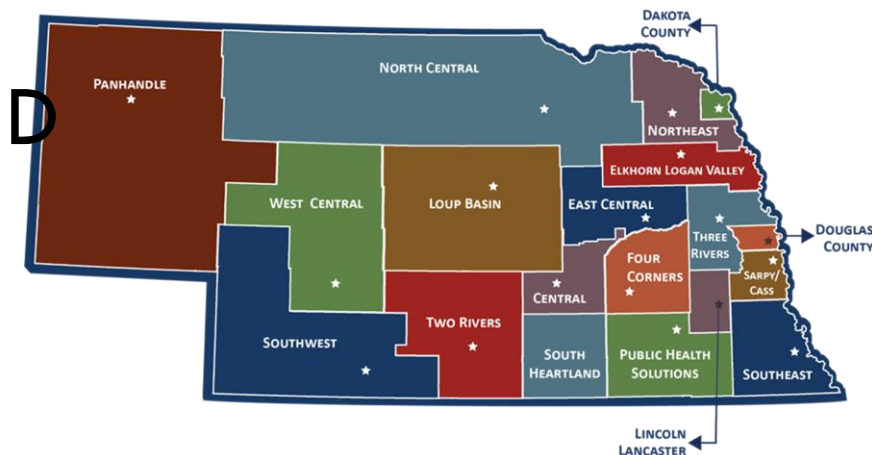
Agenda

- ❖ Welcome from the Commissioner
- ❖ Initial Comments from the Governor
- ❖ **Assessing Risk at a Community/School Level**
- ❖ Launch Nebraska- Updates
 - ❖ Leadership and Planning
 - ❖ Conditions for Learning
 - ❖ Continuity of Learning
- ❖ CARES Act Update

Assessing Risk at a Community School Level

Topics:

- What should schools be considering to organize?
- Face Covering: (type, size, age of students, parents..)
- Considerations for classroom size, school bus, lunchroom, etc.
- Other environmental consideration
- Joined by Jeremy Eschliman, Two Rivers PHD



Agenda

- ❖ Welcome from the Commissioner
- ❖ Initial Comments from the Governor
- ❖ Assessing Risk at a Community/School Level
- ❖ **Launch Nebraska - Updates**
 - ❖ Leadership and Planning
 - ❖ Conditions for Learning
 - ❖ Continuity of Learning
- ❖ CARES Act Update

Agenda

- ❖ Welcome from the Commissioner
- ❖ Initial Comments from the Governor
- ❖ **Launch Nebraska - Planning for summer and fall opening**
 - ❖ Leadership and Planning- Dr. Skretta
 - ❖ Conditions for Learning- Lane Carr
 - ❖ Continuity of Learning- Dean Folkers
- ❖ CARES Act



Launch Nebraska

Leadership and Planning

- ❖ Joint/regional planning efforts
- ❖ Opening Schools
- ❖ School Schedule
- ❖ Parent and community engagement

Joined by Dr. Skretta

- ❖ Rules, regulation, and flexibility
 - ❖ Rule 62 Petition and next steps

LEADERSHIP AND PLANNING



GOVERNANCE

Essential actions that will foster a shared understanding of goals, responsibilities, and accountability.



OPERATIONS

Essential actions to ensure operations support a safe and organized transition back to classroom instruction.



TECHNOLOGY

Essential actions to ensure technology infrastructure, assets, and guidance support an organized transition to classroom instruction.

Launch Nebraska

Conditions for Learning

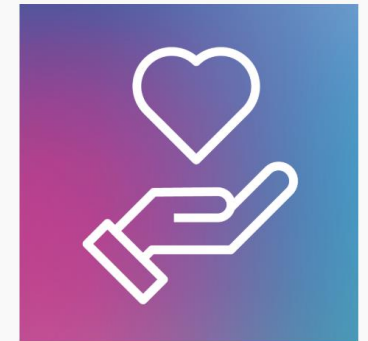
- ❖ Guidance on Summer Learning
- ❖ Importance of local understanding of conditions
- ❖ Elements to be learning & discussing
- ❖ Challenges posed by guidance or other conditions

CONDITIONS FOR LEARNING



FACILITIES

Essential actions necessary to ensure district and school assets are, and remain, safe for students and staff to inhabit.



WELLNESS

Essential actions to keep staff and students safe and healthy.

Digital Learning Hierarchy

An update...

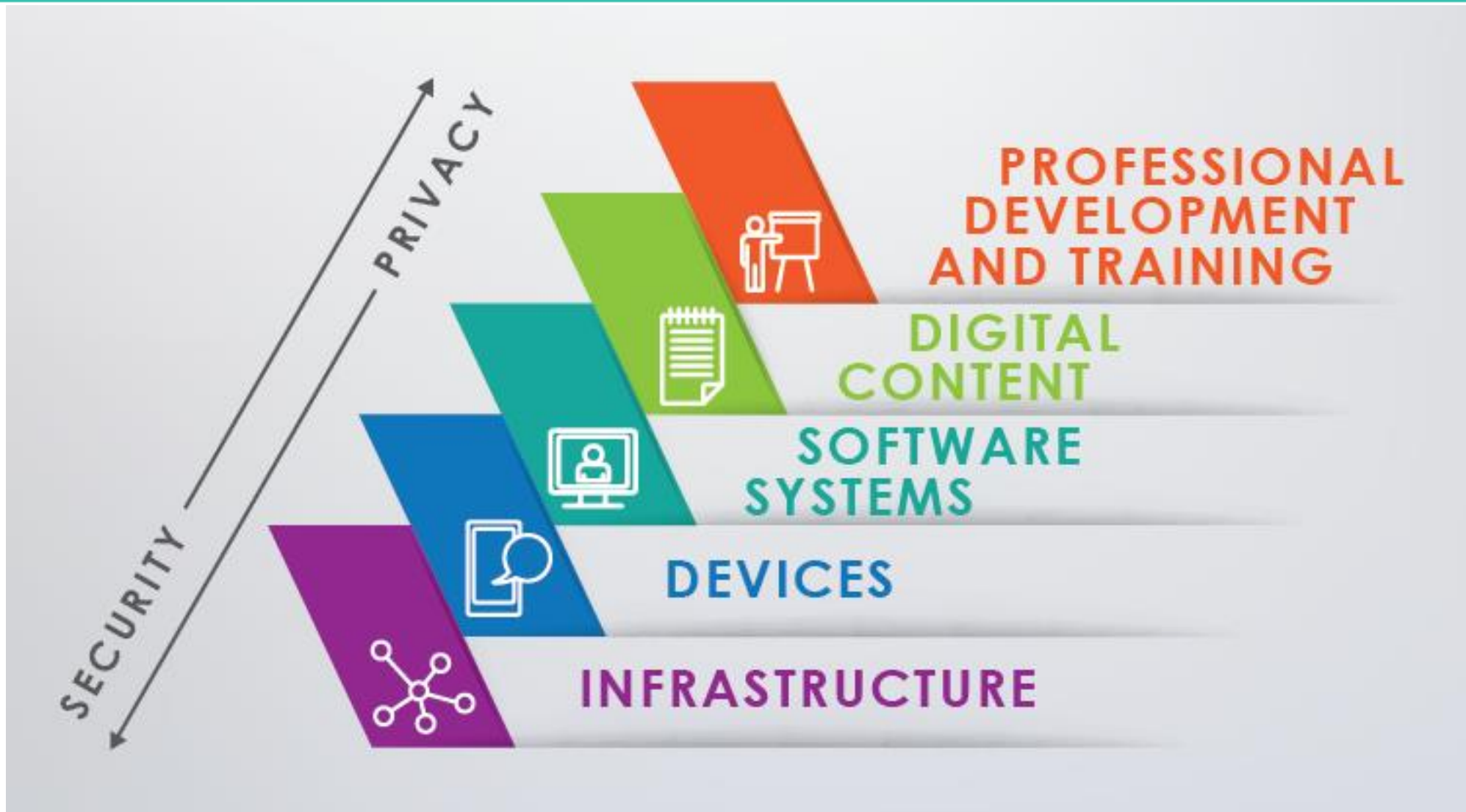
CARES Act (ESSER, GEERS)

- CARES Act
 - Local Education Agency Resources (\$59 million)
 - Statewide (\$6.5 million)
 - GEERS (\$16.4 million)
- Governor's Emergency Education Relief (GEER) Fund
 - Addressing the digital divide and related issues to support remote learning for students in K-12 schools
 - Focus on providing equitable access to technology for all students and improving parity in access to all schools
 - Can include hardware purchases for use of school students and improving access to reliable, high-speed internet for students
 - Some flexibility will be reserved to address additional COVID-19 issues

CARES Act (ESSER, GEERS)

- Survey about priorities
 - **Enhance technology infrastructure (e.g., broadband, devices, platforms, data privacy, etc.) for students and families.**
 - **Build supports for planning for possible interruptions upon returning to school and student and staff reentry.**
 - Ensure student nutritional needs are met.
 - **Provide professional learning to support an inclusive remote learning environment and engagement, along with best practices for different student groups.**
 - Create or expand mental, behavioral, and social emotional supports (**e.g., telehealth**).

Hierarchy of Digital Learning Needs



Core Decision Making Principles

- Equity - Close the Digital Access
- Consider both Public and Non Public School needs
- Highest impact of one time resources
- Consider supports for possible interruptions (immediacy)
- Consider Accessibility and Sustainability
- Ensure Privacy and Security

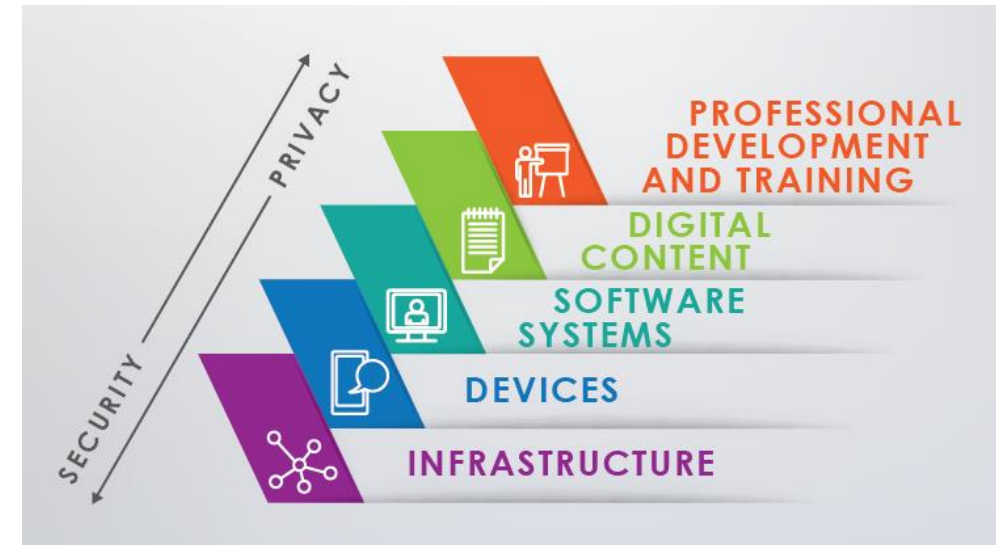
- Critical Engagement of Partners (Vendor/Community), ESUCC and ESU leadership, Districts, etc.

Infrastructure (Broadband, Internet)

- Estimated ~40,000 students without broadband access at home
- **Projects Options:**
 - Mobile Cellular Hotspots
 - Homework Hotspots at Community Institutions
 - Working with Local Internet Providers
 - TV White Space (TVWS) [470-698 MHz]
 - Wireless Education Broadband Services (EBS) [2.5 Ghz]
 - Low Earth Orbiting (LEO) Satellite Service
- Likely a combination of options locally

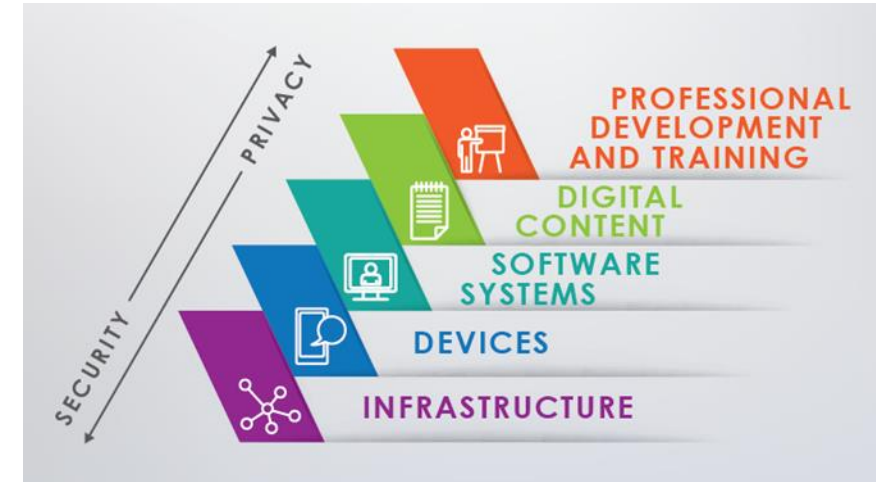
Devices

- Future Ready Profile (143,325 students) without a school issued device (public k-12 data only) November 2019
- @\$300/device ~ \$43 million
- **Project Options:**
 - Leverage ESUCC Marketplace
 - Create Device Standards/Options
 - Establish an order process
 - Engage community partners/philanthropy



Software Systems

- Learning Management System (LMS)
- Assessment Management System
- Collaborative Learning Technologies
 - Zoom, Microsoft Teams, WebEx
- Digital Learning Object Database System
- Identity Management
- **Project Options:**
 - Leverage existing resources for efficient pricing
 - Ensure option for access
 - Coordinate collaborative tools



Software Systems – Learning Management

- 41% of public districts (53% of students) reported none/other to LMS -- Future Ready Profile Data
- Learning Management System can:
 - Support remote learning, but also in person learning / hybrid version
 - Connect systems performance to student information system
 - Create continuity with Parents with districtwide implementation
 - Integrate digital tools and other software resources
- Largest “footprint” in Nebraska was Canvas (31% of districts, also many higher education institutions operate)

Software Systems – Learning Management

- **LMS Option for Nebraska Schools**

- Educational Service Unit 2 Contract
- Provide access to “statewide pricing” @ \$3/student
- Cover one time implementation cost (\$4,500 – 6,000/ district)
- For a Fall implementation and Training (sign up by June 19, 2020)
- More information available on the Launch Nebraska site

Digital Content & Instructional Materials

- Most commonly used instructional materials used in Nebraska were not designed for digital delivery:
 - <https://nematerialsmatter.org/im-map/>
- Identify and utilize high-quality instructional materials that are digital ready.
- **Project Options:**
 - Investigate digital content options/opportunities, specifically for K-6 Math and ELA.
 - Continue expansion of the Nebraska Open Education Resources (OER) Hub and Course Builder Tool.
 - Evaluate existing statewide content and courses, specifically for HS.

Professional Development and Training

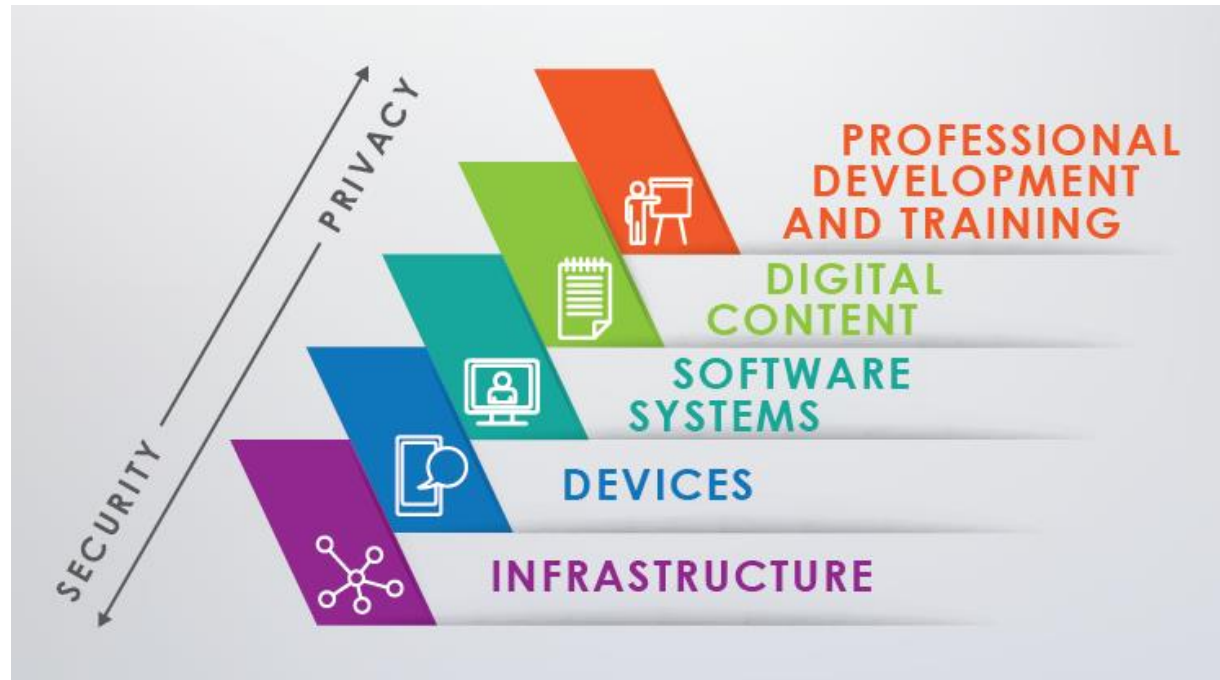
- **High Quality Professional Development**

- About Teaching in Remote Learning/Hybrid environments
- Professional learning to support an inclusive remote learning environment and engagement, along with best practices for different student groups.
- Supports for Unfinished Learning
- Training Supports for parents/guardians

- **Project Options:**

- Leverage District and ESU Professional Learning Options
- Create statewide Online Professional Learning Library

School Digital Learning Profile Plans



- Still need additional information and details
- District and Nonpublic schools submit a Digital Learning Profile and Plan
- July 1, 2020

Action Steps

June 19, 2020

- Sign up for Canvas LMS statewide pricing option, at Launch Nebraska www.launchne.com for fall implementation.

July 1, 2020

- Complete the Digital Learning Profile and Plan

CARES ACT



The CARES Act

The Coronavirus Aid, Relief, and Economic Security (CARES) Act provides specific funding sources for Local Education Agencies to address the impact that COVID-19 has had, and continues to have, on elementary and secondary schools.

[THE CARES ACT WEB PAGE](#)

Wrap-up

- Each week we will try to address some of the questions that have surfaced through the ESU/regional conversations and other forums.
- As always, visit the www.education.ne.gov/publichealth page for additional information.
- Staff at the NDE are working to address key FAQs and other topics as we know them.
- Please continue to submit your questions to <https://www.education.ne.gov/publichealth/contact/>



Thank you!