



Important Update Regarding COVID-19

Date: May 4, 2020

Time: 4:00 pm CST

Agenda

- ❖ **Welcome from the Commissioner**

 - ❖ **Themes today around end of year, summer, & fall planning**

- ❖ Initial Comments from the Governor

- ❖ Public Health Updates

- ❖ Comments and Thoughts from the Field

 - ❖ ESU Regional Conversations

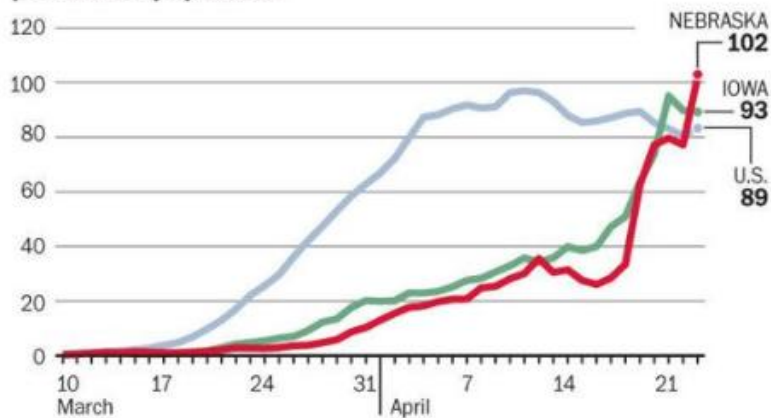
 - ❖ Commissioner Advisory Group

- ❖ NDE Highlights

Agenda

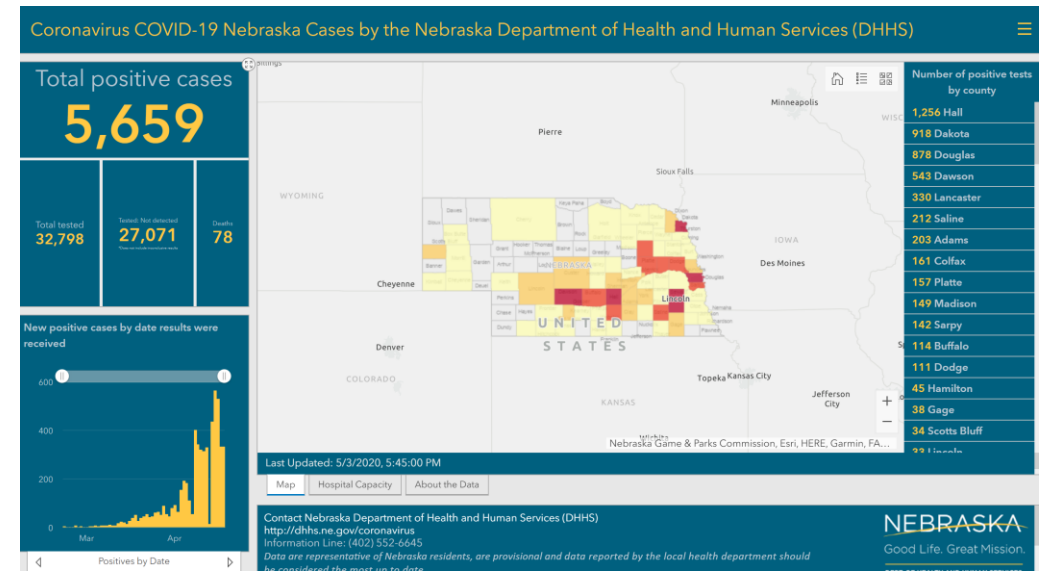
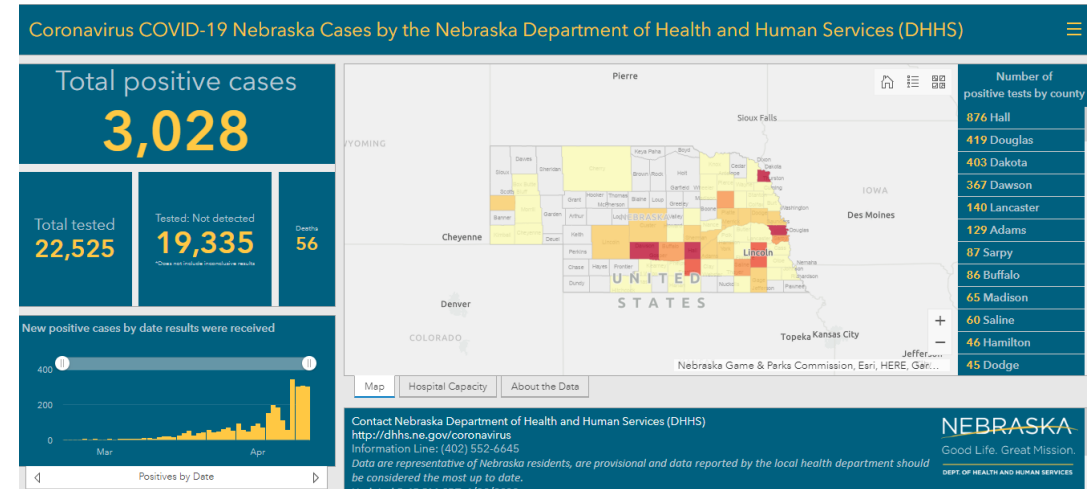
- ❖ Welcome from the Commissioner
- ❖ Initial Comments from the Governor
- ❖ Public Health Updates

Daily new coronavirus cases Through April 23
 While new cases appear to have peaked nationally, in Nebraska and Iowa they have continued to rise sharply.
5-day rolling average of new confirmed cases per million population



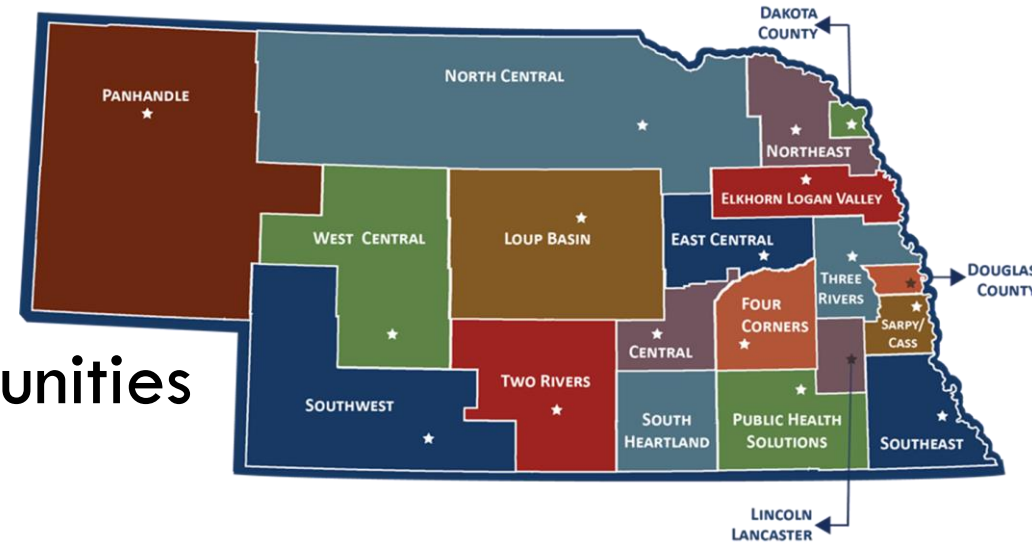
SOURCE: Compiled from Covid Tracking Project data THE WORLD-HERALD

Last Monday



State and Local Public Health Officials

- Directed Health Measures (DHM)
 - Statewide and Local
- Cases and Concerns for Schools and Communities



Joined by the following panelists today:

Gary Anthon, Chief Medical Officer

Adi Pour, Director of Douglas County Health Department

Kim Engel, Director of Panhandle Health Department

Agenda

- ❖ Welcome from the Commissioner
- ❖ Initial Comments from the Governor
- ❖ Public Health Updates
- ❖ **Comments and Thoughts from the Field**
 - ❖ **Commissioner Advisory Group**
 - ❖ **ESU Regional Conversations**
- ❖ NDE Highlights

Commissioner's Advisory Group

Discussion with Superintendent members of the Advisory Group

- Joined by Mark Shepard and Jim Sutfin
- Possible Topics
 - End of the year approaches
 - May 4th Rule 10
 - Summer transitions
 - Fall return to school protocols and planning
 - Please review www.returntoschoolroadmap.org

Using ESU/Regional Conversations to Organize Questions from the Field

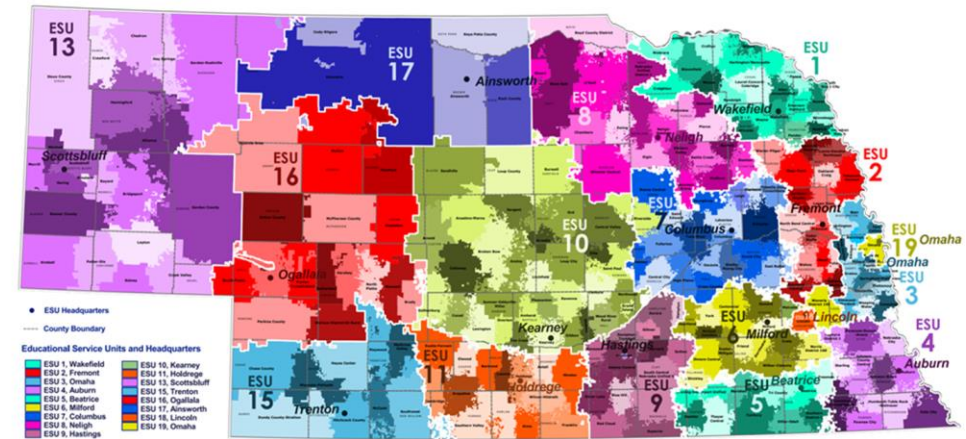
- Discussion with the Commissioner and Educational Service Unit leaders
 - Joined by Larianne Polk and John Skretta

Topics –

- End of the year reporting
- Rule 62 and efforts to provide further guidance on rule/regulation for the future
- Continue to use regional conversations to assist with key topics



2017-18 Nebraska Public School Districts and Nebraska Educational Service Units



NDE Highlights

Launch Nebraska (Cory Epler)

- Leadership and Planning

- Governance**

- Operations**

- Technology**

- Conditions for Learning

- Wellness**

- Facilities**

- Continuity of Learning

- Instruction**

- Transitions**

- Professional Development

NDE Highlights

Digital Learning Efforts (Dean Folkers)

- **Software Systems**
- **Devices**
- **Infrastructure**

NDE Highlights

- Early Childhood Education (Melody Hobson)

Melody.Hobson@Nebraska.gov

- Nutrition Services (Sharon Davis)

- End of School Year
- Summer Transitions
- Fall Planning

Sharon.L.Davis@Nebraska.gov

Wrap- UP

- Each week we will try to address some of the questions that have surfaced through the ESU/regional conversations and other forums.
- As always, visit the www.education.ne.gov/publichealth page for additional information.
- Staff at the NDE are working to address key FAQs and other topics as we know them.
- Please continue to submit your questions to <https://www.education.ne.gov/publichealth/contact/>



Thank you!