



Important Update Regarding COVID-19

Date: May 18, 2020

Time: 4:00 pm CST

Agenda

- ❖ **Welcome from the Commissioner**

- ❖ Initial Comments from the Governor

- ❖ Public Announcements Planned for this week

- ❖ Launch Nebraska- Planning for summer and Fall opening

 - ❖ Leadership & Planning

 - ❖ Conditions for Learning

 - ❖ Continuity of Learning

- ❖ CARES Act

Due to Memorial Day Holiday, COVID-19 Weekly
Update will Not be held next Monday, May 25th,
2020

Agenda

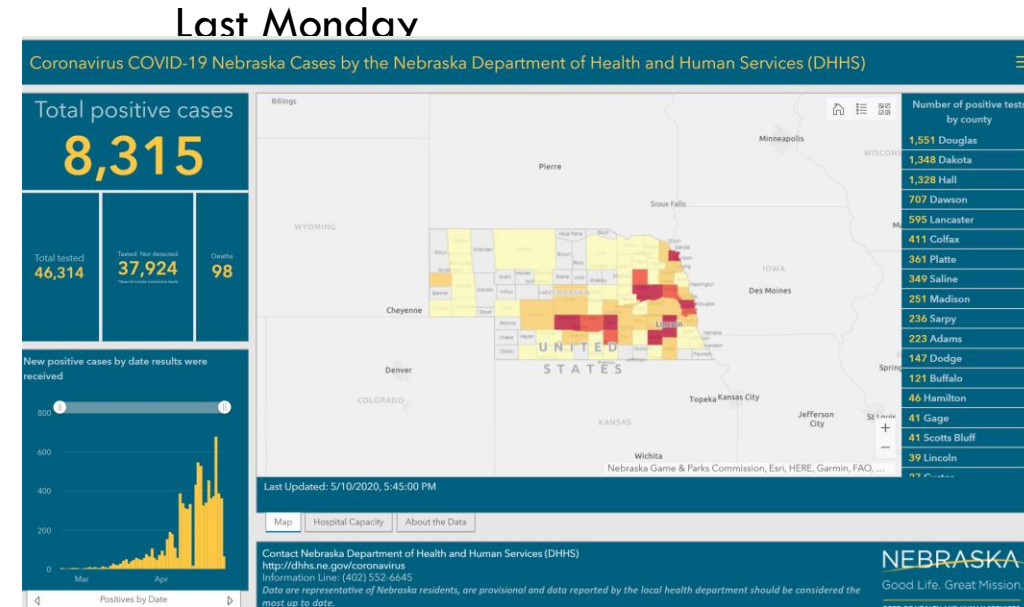
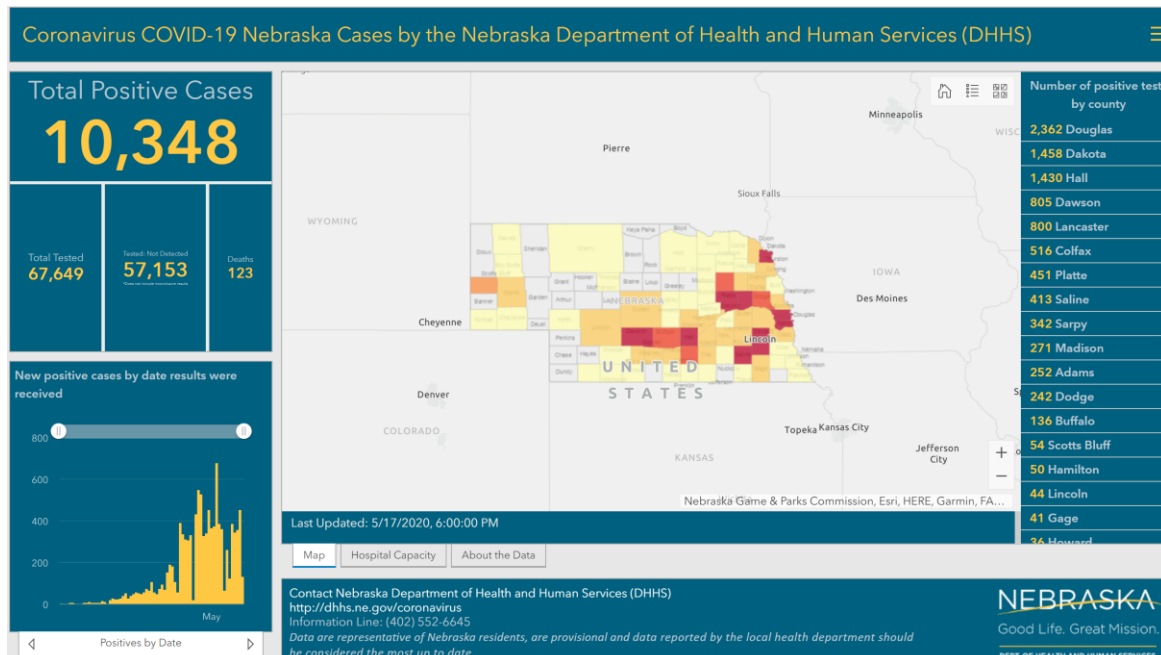
- ❖ Welcome from the Commissioner
- ❖ **Initial Comments from the Governor**
- ❖ Public Announcements Planned for this week
- ❖ Launch Nebraska- Planning for summer and Fall opening
 - ❖ Leadership & Planning
 - ❖ Conditions for Learning
 - ❖ Continuity of Learning
- ❖ CARES Act

Governor's Comments

❖ Welcome from the Commissioner

❖ Initial Comments from the Governor

- Executive Order on public meetings?
- Other plans to extend emergency powers?



Agenda

- ❖ Welcome from the Commissioner
- ❖ Initial Comments from the Governor
- ❖ **Public Announcements Planned for this week**
- ❖ Launch Nebraska- Planning for summer and Fall opening
 - ❖ Leadership & Planning
 - ❖ Conditions for Learning
 - ❖ Continuity of Learning
- ❖ CARES Act

Public Announcements

- a. Summer Learning Conditions
- b. Summer Graduation Conditions
- c. CARES Act application and next steps

Agenda

- ❖ Welcome from the Commissioner
- ❖ Initial Comments from the Governor
- ❖ Public Announcements Planned for this week
- ❖ **Launch Nebraska- Planning for summer and Fall opening**
 - ❖ Leadership & Planning
 - ❖ Conditions for Learning
 - ❖ Continuity of Learning
- ❖ CARES Act

Launch Nebraska

Governance & Planning

- ❖ Joint/regional planning efforts- Joined by Jack Moles (NRCSA)
- ❖ Roles for school leaders (Board, Superintendents, principals, teachers, etc)
- ❖ Rules, regulation, and flexibility- Joined by Kraig Lofquist (ESUCC)

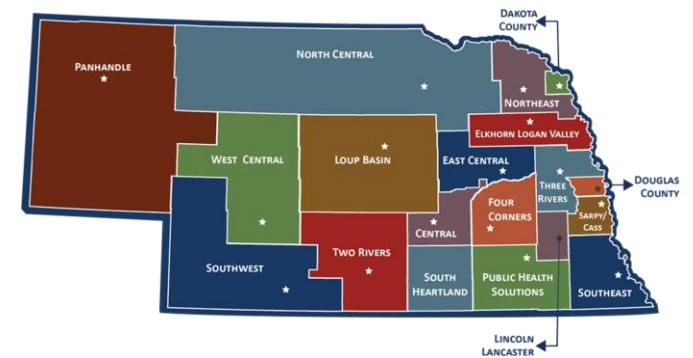
Launch Nebraska

Conditions for Learning (Lane Carr)

Topics:

- What should schools be considering to organize?
- PPE, cleaning supplies, masks, etc?
- Other environmental consideration
- Joined by the following panelists today:

Dr. Adi Pour, Douglas County Health Department



Launch Nebraska

NSAA Update-Requirements for opening weight rooms

- Maintain social distance by being 6 feet apart
- Follow gathering guidelines of groups of 10 or less students
- Groups of 10 or less must be pre-determined
- Once groups determined, students may not switch from one group to another
- Interaction between groups shall be avoided
- Sessions can only include weightlifting, running, and exercises designed to promote physical fitness.
- Sport-specific drills are not permitted, and sport-specific equipment may not be used.
- Implement diligent and effective cleaning and disinfecting of frequently touched objects and surfaces following the [guidance of the CDC](#)

Launch Nebraska

Conditions for Learning (Lane Carr)

Nutrition Services (Kayte Partch)

- Important waivers extended through August 31, 2020 to support meal service while practicing social distancing :
 - a. Meal service times
 - b. Non-congregate service
 - c. Parent pick-up

Launch Nebraska

Continuity of Learning

- ❖ Academic and Professional Development (Cory Epler)
- ❖ School and District Supports (Shirley Vargas)

CONTINUITY OF LEARNING



TRANSITIONS



INSTRUCTION

Agenda

- ❖ Welcome from the Commissioner
- ❖ Initial Comments from the Governor
- ❖ Public Announcements Planned for this week
- ❖ Launch Nebraska- Planning for summer and Fall opening
 - ❖ Leadership & Planning
 - ❖ Conditions for Learning
 - ❖ Continuity of Learning
- ❖ **CARES Act**

NDE Highlights

CARES ACT (Brian Halstead)

❖ Nebraska total - \$65 million

- NDE reserving 10% - \$6.5 million
 - Must be used for emergency needs resulting from COVID-19
- School districts - \$59 million
 - Allocated based on 2019 Title IA formula

❖ Public school districts are required to provide equitable services to nonpublic school students with their allocation of ESSER funds

❖ Commissioner intends to apply for ESSER funds by *May 22, 2020*

NDE Highlights

CARES ACT Survey Summary (Shirley Vargas)

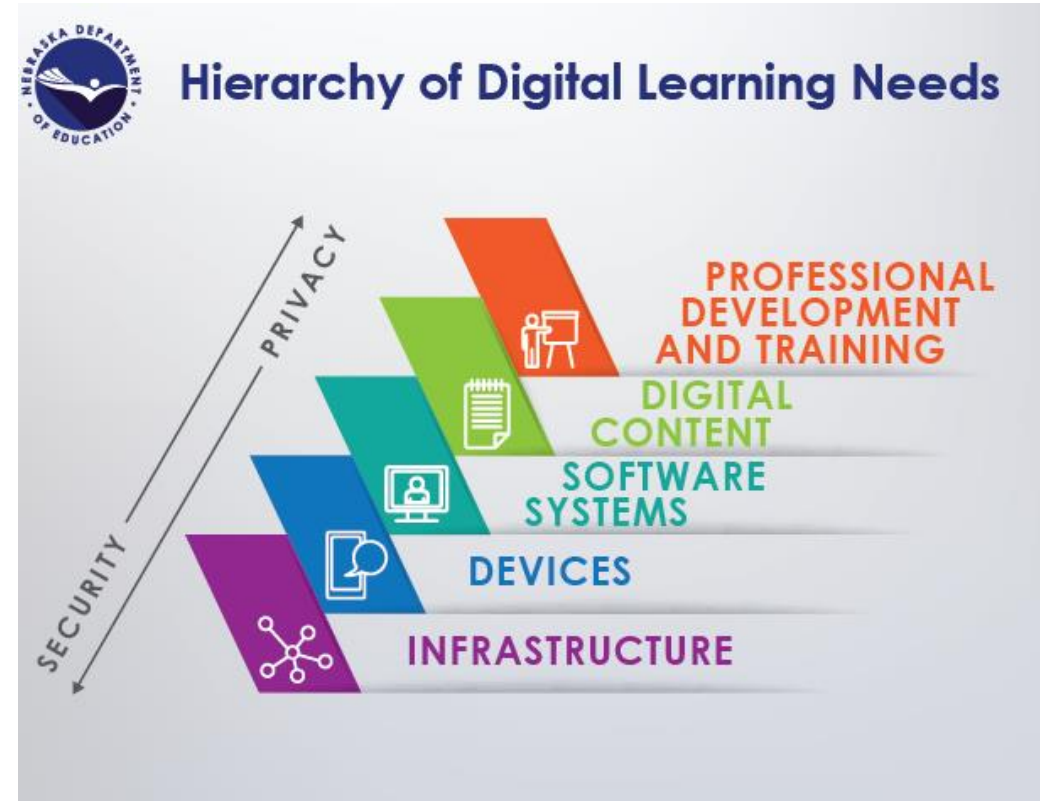
- Enhance technology infrastructure (e.g., broadband, devices, platforms, data privacy, etc.) for students and families.
- Build supports for planning for possible interruptions upon returning to school and student and staff reentry.
- Ensure student nutritional needs are met.
- Provide professional learning to support an inclusive remote learning environment and engagement, along with best practices for different student groups.
- Create or expand mental, behavioral, and social emotional supports (e.g., telehealth).

NDE Highlights

CARES ACT (Dean Folkers)

❖ CARES Act Survey Summary- Top Five

- Technology and Capacity
- NDE is working with several partners to consider key options for schools in Nebraska
- Considerations about the uses of CARES ACT
- More information and details will be coming in the following weeks



Wrap- UP

- Each week we will try to address some of the questions that have surfaced through the ESU/regional conversations and other forums.
- As always, visit the www.education.ne.gov/publichealth page for additional information.
- Staff at the NDE are working to address key FAQs and other topics as we know them.
- Please continue to submit your questions to <https://www.education.ne.gov/publichealth/contact/>



Thank you!