



## **Important Update Regarding COVID-19**

**Date: April 27, 2020**

**Time: 4:00 pm CST**

# Agenda

---

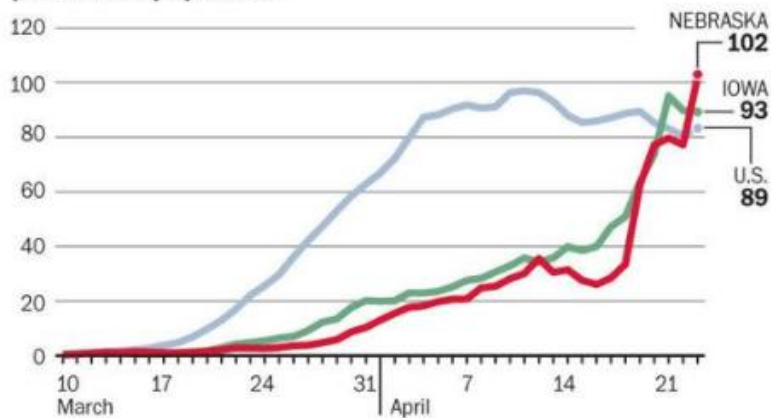
- ❖ **Welcome from the Commissioner**
  - ❖ **Managing new Q&A**
- ❖ Initial Comments from the Governor
- ❖ Public Health Updates
- ❖ Comments and Thoughts from the Field
  - ❖ ESU Regional Conversations
  - ❖ Commissioner Advisory Group
- ❖ NDE Highlights

# Agenda

- ❖ Welcome from the Commissioner
- ❖ Initial Comments from the Governor
- ❖ Public Health Updates

**Daily new coronavirus cases** Through April 23  
While new cases appear to have peaked nationally, in Nebraska and Iowa they have continued to rise sharply.

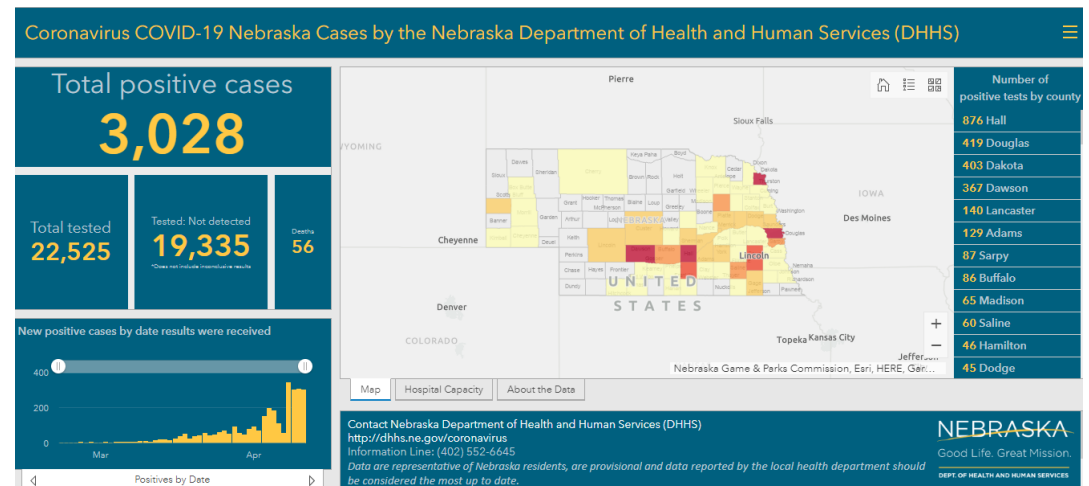
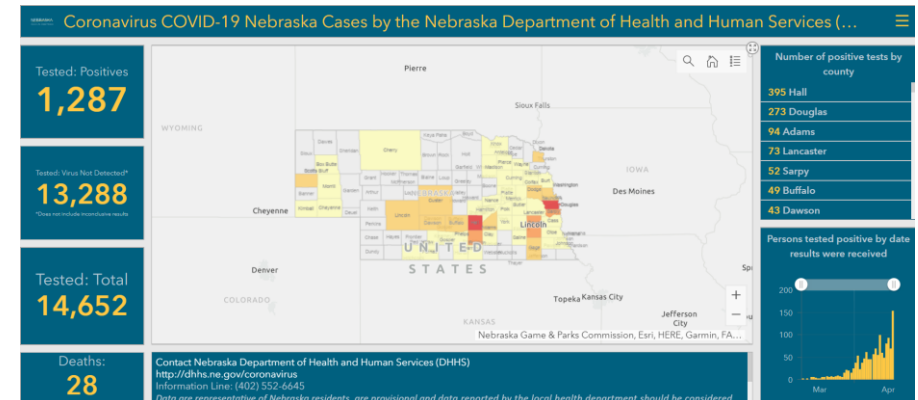
**5-day rolling average of new confirmed cases per million population**



SOURCE: Compiled from Covid Tracking Project data

THE WORLD-HERALD

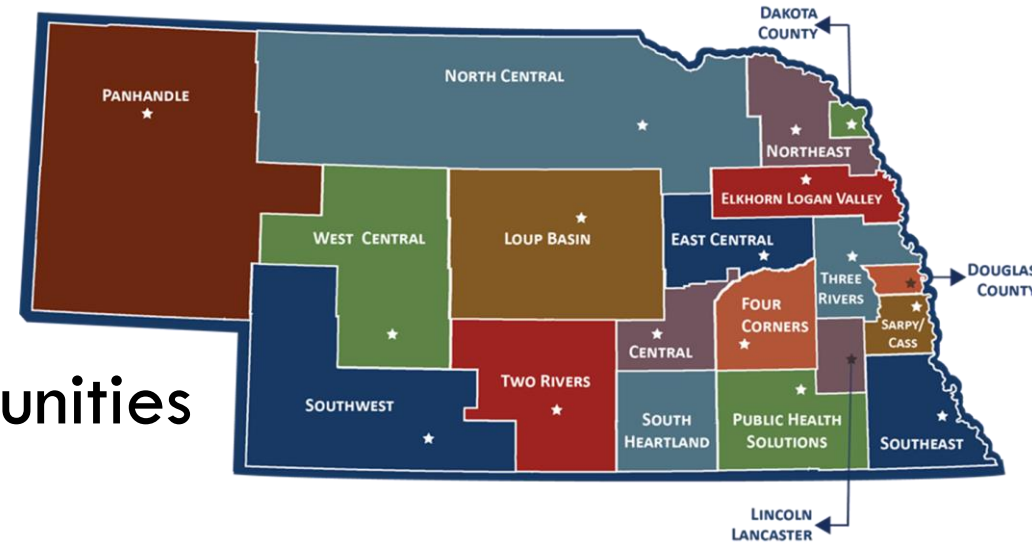
Last Monday



# State and Local Public Health Officials

---

- Directed Health Measures (DHM)
  - Statewide and Local
- Cases and Concerns for Schools and Communities



Joined by the following panelists today:

Gary Anthone, Chief Medical Officer

Jeremy Eschliman, Two Rivers Public Health Department

Michele Bever, South Heartland District Health Department

Teresa Anderson, Central District Health Department

# Agenda

---

- ❖ Welcome from the Commissioner
- ❖ Initial Comments from the Governor
- ❖ Public Health Updates
- ❖ **Comments and Thoughts from the Field**
  - ❖ **Commissioner Advisory Group**
  - ❖ **ESU Regional Conversations**
- ❖ NDE Highlights

# Commissioner's Advisory Group

---

## Discussion with Superintendent members of the Advisory Group

- Caroline Winchester, Chadron Public Schools
- Andy Rikli, Papillion LaVista
- Possible Topics
  - End of the year approaches
  - Summer transitions
  - Most recent DHM and community perspectives
  - Rules/Regs and next steps

# Using ESU/Regional Conversations to Organize Questions from the Field

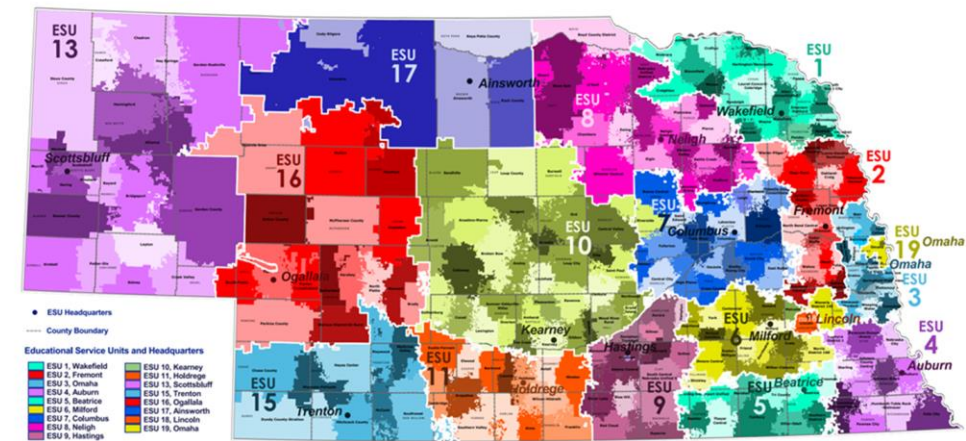
- Discussion with the Commissioner and Educational Service Unit leaders
  - Joined by Kraig Lofquist, ESUCC and Dan Schnoes, ESU 3

## Topics –

- End of the year reporting/guidance on rule/regulation
- Continue to use regional conversations to assist with key topics



## 2017-18 Nebraska Public School Districts and Nebraska Educational Service Units



# NDE Highlights

---

- ESEA Fiscal Waiver (Beth)
- NDE Rule 10 Accreditation (Brad D.)
- Transportation (Bryce)
- E-Learning Days Digital Resources (Dorann)
- Overview CARES Act Next Steps



# Wrap- UP

---

- Each week we will try to address some of the questions that have surfaced through the ESU/regional conversations and other forums.
- As always, visit the [www.education.ne.gov/publichealth](http://www.education.ne.gov/publichealth) page for additional information.
- Staff at the NDE are working to address key FAQs and other topics as we know them.
- Please continue to submit your questions to <https://www.education.ne.gov/publichealth/contact/>



**Thank you!**