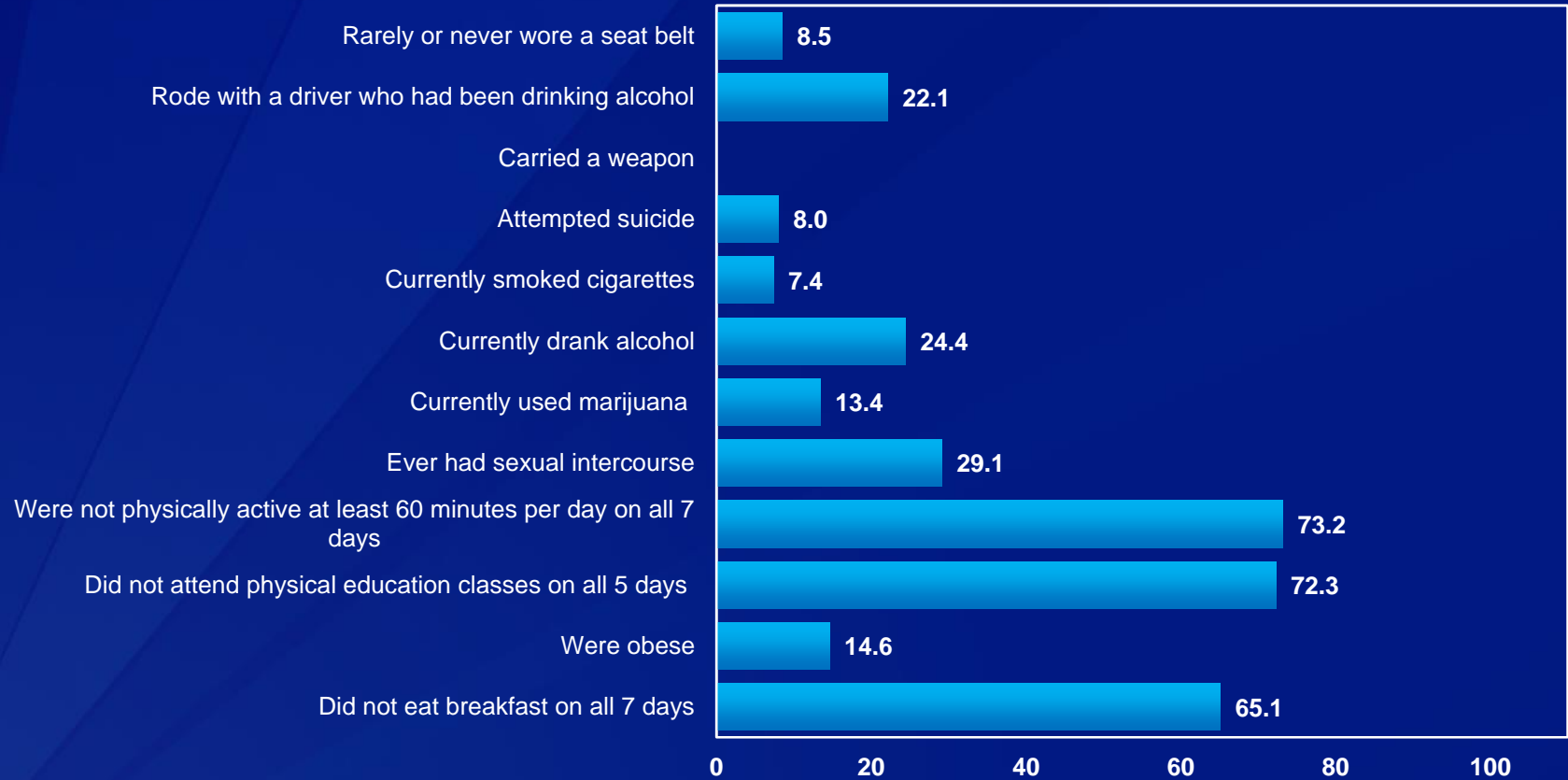


# Nebraska High School Survey

## 2016 Youth Risk Behavior Survey Results

Percentage of students who:



Note: This graph contains weighted results. See the corresponding summary tables for detailed explanation of data.

# Nebraska High School Survey

## 2016 Youth Risk Behavior Survey Results

Percentage of students who:

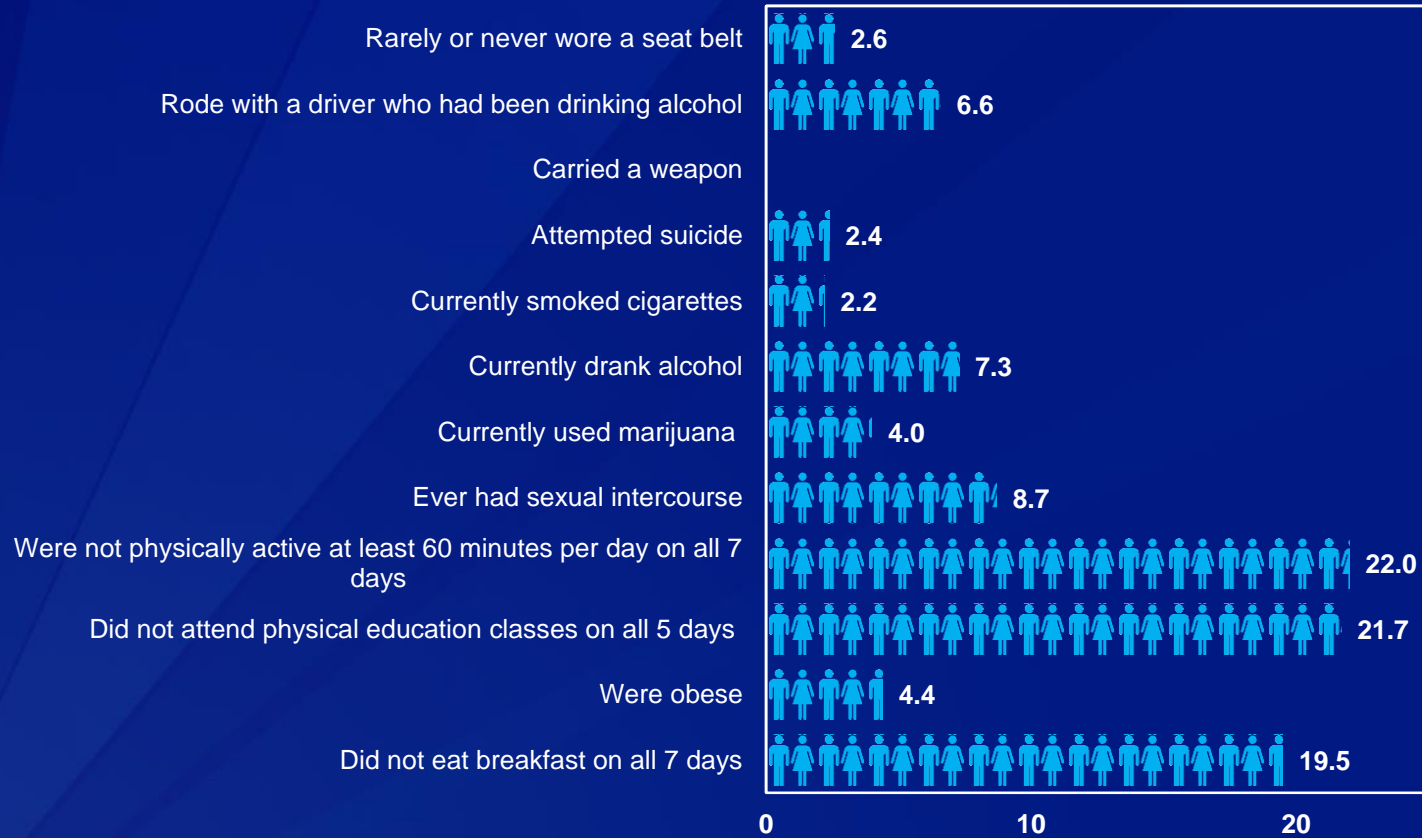


Note: This graph contains weighted results. See the corresponding summary tables for detailed explanation of data.

# Nebraska High School Survey

## 2016 Youth Risk Behavior Survey Results

Number of students in a class of 30 who:

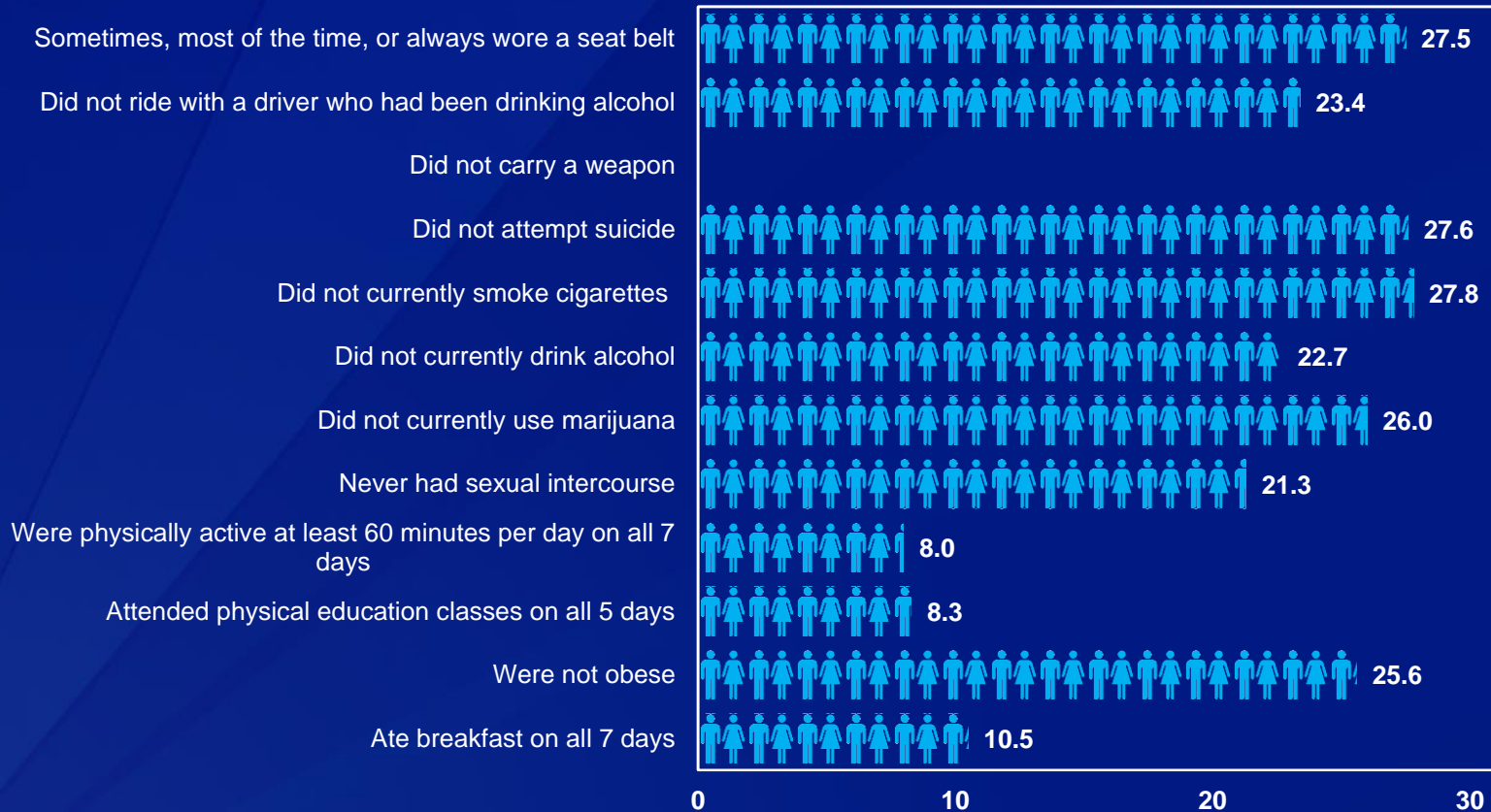


Note: This graph contains weighted results. See the corresponding summary tables for detailed explanation of data.

# Nebraska High School Survey

## 2016 Youth Risk Behavior Survey Results

Number of students in a class of 30 who:



Note: This graph contains weighted results. See the corresponding summary tables for detailed explanation of data.