

reVISION

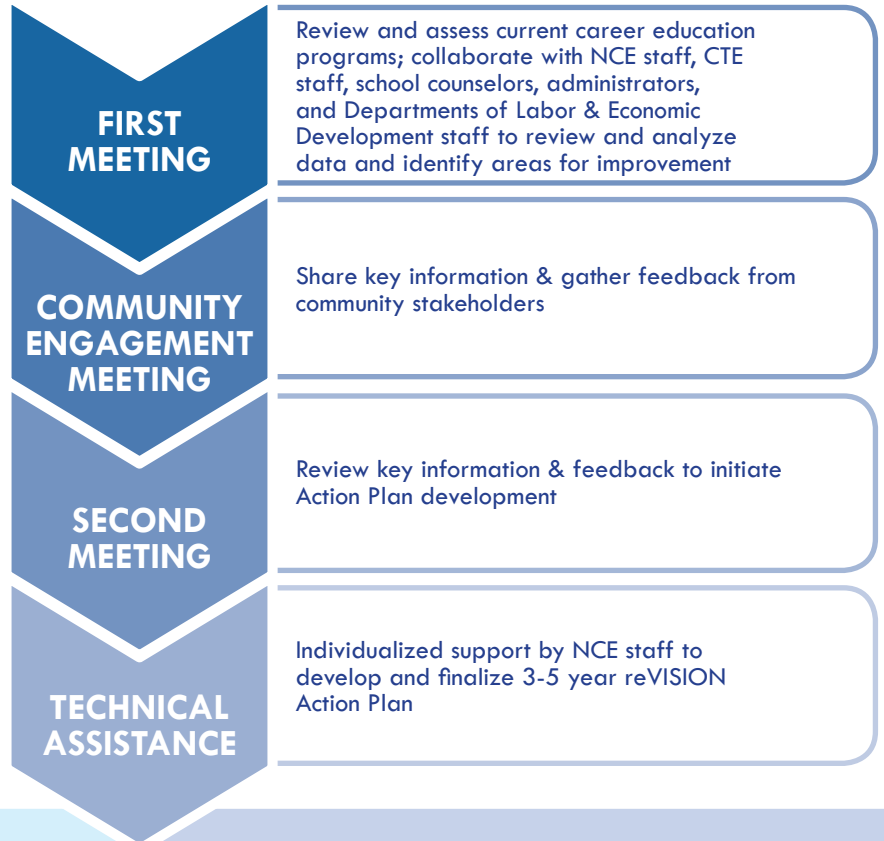
Establishing a clear vision for Nebraska Career Education

What is reVISION?

reVISION is a strategic approach for Nebraska schools to analyze their current Career Education system and make adjustments to more effectively prepare students for college **and** careers.

Why reVISION?

reVISION provides a unique opportunity to bring understanding, new energy, and commitment to Career and Technical Education as a vital education, workforce, and economic development strategy.



PARTICIPANTS

100

Districts
completed

22

Districts
will complete
in 2018-19

AWARDED

over
\$3.5M

in Action Grants
Since first cohort in 2012-2013

For more information,
contact:

Katie Graham
State Director of Career Education
402.471.3104 | katie.graham@nebraska.gov

Therese Marzouk
Career Education Workforce Partnership Specialist
402.471.2494 | therese.marzouk@nebraska.gov

Outcomes of reVISION

OBJECTIVES

reSULTS

Align career education programs with workforce needs and economic development priorities to continue the development of Nebraska's talent pipeline



- Addition of new Programs of Study
- Elimination of outdated programs not aligned to needs
- Revision of current curriculum
- Identification of instructional material/equipment needs
- Collaboration with business/industry

Update current career education Programs of Study and curricular offerings to meet postsecondary education entrance requirements



- Increased rigor and relevance of CTE offerings
- Programs of Study aligned to postsecondary programs
- Expansion of career academy programs
- Expansion of dual-credit offerings

Strengthen career readiness resources and strategies



- Focus on Nebraska's Career Readiness (CR) Standards
- Addition of purposeful instruction on CR standards
- Increased employer engagement
- Implementation of Workplace Experiences

Fortify career guidance initiatives for all students



- Increased engagement with Nebraska Career Connections
- Review of PK-12 career development process
- Implementation of Engage curriculum
- Implementation of Personal Learning Plans/student planning

Engage local/regional businesses in career education programming and creation of a common language between local employers and educators



- Meaningful engagement of business/industry in CTE curricular planning
- Expansion of Workplace Experiences including Work-Based Learning
- Increased student access to local business experts
- Increased relevance of curriculum for students

PARTICIPANTS

Adams Central	Chadron	Hampton	Norfolk	Riverside	Tri County
Allen	Columbus	Hartington	Norris	Santee	Umo N Ho N Nation
Arapahoe	Cozad	Newcastle	North Bend Central	Sargent	Valentine
Arnold	Creighton	Harvard	North Platte	Schuyler	Wahoo
Ashland-Greenwood	Crete	Hastings	Northwest (GI)	Scottsbluff	Wakefield
Auburn	David City	Hershey	Oakland-Craig	Scribner-Snyder	Walthill
Aurora	Deshler	Kearney	Omaha	Silver Lake	Wausa
Bancroft-Rosalie	Doniphan-Trumbull	Kenesaw	O'Neill	South Sioux City	Waverly
Beatrice	East Butler	Laurel-Concord-Coleridge	Ord	South Central	Wayne
Bellevue	Elm Creek	Lexington	Osmond	Unified	Weeping Water
Bennington	Emerson-Hubbard	Lincoln	Palmyra	Springfield	West Boyd
Bloomfield	Fairbury	Logan View	Papillion-LaVista	Platteview	West Point
Boone Central	Freeman	Loup County	Paxton	St Paul	Westside
Brady	Fremont	Lyons-Decatur	Pender	Stanton	Wheeler Central
Bridgeport	Friend	Northeast	Plainview	Stapleton	Winnebago
Broken Bow	Gering	Madison	Plattsmouth	Sumner-Eddyville-Miller	Winside
Burwell	Gibbon	Maxwell	Ponca	Superior	Wisner-Pilger
Cedar Bluffs	Giltner	McPherson County	Ralston	Sutherland	Wood River
Central City	Gothenburg	Millard	Randolph	Sutton	Wynot
Central Valley	Grand Island	Neligh-Oakdale	Ravenna	Tekamah-Herman	
Centura	Greeley-Wolbach	Niobrara	Red Cloud	Thayer Central	



Funds provided from the Carl D. Perkins Career and Technical Education Act of 2006, Reserve Funds, and Statewide Leadership Funds.

It is the policy of the Nebraska Department of Education not to discriminate on the basis of sex, disability, race, color, religion, marital status, age, or national origin in its education programs, admission policies, employment, or other agency programs.