

Kindergarten – I am Nebraska! – Lesson 3

Grade <u>K</u>	<p>Theme: I am Nebraska! Lesson Title: Nebraska Symbols! Literacy Strategies: oral discussions, think-pair-share Early Childhood Literacy Strategies: language modeling, vocabulary development, think aloud, nonlinguistic representations, modeled and shared writing, guided writing, descriptive feedback Suggested lesson length and implementation: 3-5 days in November</p>
Objectives / Learning Targets	<ol style="list-style-type: none"> 1. I can show whether I like honey or not by placing a bee di-cut on a graph. 2. I can show whether I prefer white, chocolate, or strawberry milk by placing a cow di-cut onto a graph. 3. I can show whether I am a Husker football fan or not by placing a football di-cut onto a graph. 4. I can explain my (above choices) to my classmates through illustrations and verbal explanations.
Background Information	Students should know what a symbol is and why they are used.
Materials & Resources	<ul style="list-style-type: none"> • Di-cuts from MTC/production: bee (yellow for decorating purposes), cow (white, brown, pink), football (brown) • Chart or butcher paper for graphs • Nebraska's symbols power point • Downloaded videos from <i>Sharepoint>Elementary Social Studies>Lesson Plans & Resources>Nebraska Sesquicentennial Lessons>KDG.</i>) • Optional: 7 empty gallon milk cartons, 1 ear of corn with husks, or pictures
Content Standards/ Indicators	<p>Social Studies: SS 0.1.2.b Identify patriotic symbols SS 0.4.2.a Identify the contributions of historical people and the impact of symbols</p> <p>Math: MA 4.1 – Display and Analysis – Students will sort, classify, represent, describe and compare sets of objects.</p> <p>ELA: ELA 0.2.1.g With adult guidance, persevere in writing tasks ELA 0.3.1.a Communicate ideas clearly to others within structured classroom activities</p>
Procedures & Routines	(day 1) Anticipatory Set: Teacher will show the "How its Made – Honey" video.
Gradual Release of Instruction Modeled (M) Shared (S)	(day 1) Whole Group: After watching the video, the teacher will remind the students that we are learning a lot about Nebraska this school year because of its 150 th birthday coming up! The teacher will review what a symbol is and explain that students will be learning about a few of Nebraska's state symbols. (M) The teacher should open up the power point or PDF of the 3 Nebraska symbols that will be covered in this lesson.

Kindergarten – I am Nebraska! – Lesson 3

Guided (G)
Independent (I)

(M) "Today's focus will be on the honey bee." Teacher will show the pictures on the slide and describe each picture. (M) The teacher will then read the facts on the honeybee and why it was chosen as a Nebraska symbol. (M)

The teacher will explain to the students that they will be making a whole class chart/graph on whether "I like honey" or "I do not like honey". (S, G) The teacher will pass out a bee di-cut (pre-ordered from MTC/production room) and direct students back to their work areas to write his/her name on their bee, big enough to be seen by the whole class. As time permits, students can also color their honeybee to the individual child's liking (be sure name is still visible). (G, I) Once the students have decorated/colored their bee di-cut, the teacher will ask the students to come back to whole group carpet with their di-cuts to begin creating the class graph. (G) The teacher should create two columns on a sheet of chart paper or butcher paper that read "I like honey." and "I do not like honey." modeling the writing in front of the students. (M) The teacher will begin by placing their honeybee di-cut in the column of their choice. (M) The teacher will have the students come up one at a time, giving each child the choice of where they want to put their honeybee on the chart. (S, G) The teacher should ask each student to read the full sentence out loud while they place their honeybee onto the chart. (G, I) Example: "I like honey" or "I do not like honey."

Once every child has finished placing their honeybee on the chart, discuss the graph with students: *Count each bee in each of the two columns on the graph. Which has more? Which one has less?*

The teacher should display this chart somewhere in the room.

(day 1) **Optional transition:** "Honeybee lifecycle rap" video/song

(day 2) **Engagement Activity:** Watch Nebraska Dairy Farm Tour video

(day 2) **Whole Group:** The teacher should follow the same directions as day 1, moving onto Nebraska's State Beverage – Milk. The teacher will use pre-ordered di-cuts from MTC/production of white, brown, and pink cows. © On this day, the teacher will create a chart that represents the students' favorite milk flavor: White, Chocolate, or Strawberry. When the students come up to put their cow on the graph, they will give a complete sentence of: "I like white milk, I like chocolate milk, or I like strawberry milk." Optional: Have 7 empty gallon milk jugs (or pictures) to show the amount.

(day 3) **Engagement Activity:** Watch "There is No Place like Nebraska" video

(day 3) **Whole Group:** The teacher should follow the same directions as day 1, moving onto Nebraska's Nickname – The Cornhusker State. The teacher will create a chart that states, "I am a Husker football fan!" "I am a fan of a different football team." Optional: Have an ear of corn and husk it to show students.

Kindergarten – I am Nebraska! – Lesson 3

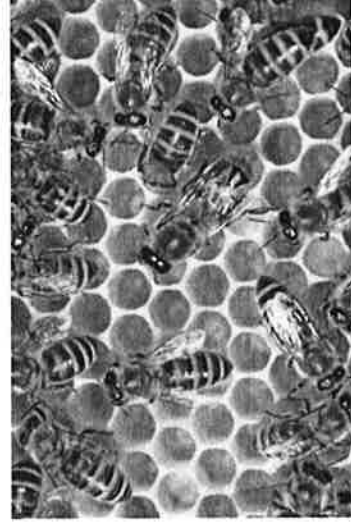
Summary	Have students share their answers with friends and direct students to pick one Nebraska symbol and write about it in their journals or another writing device.
Extension Activities and Resources	<p>Learning center ideas: if you have a discovery table, you may put bees or insects in whatever material you have in your table (sand, bird seed, shredded paper, water beads, etc). You could read the book, <u>It Looked Like Spilt Milk</u> by Charles Shaw as a read aloud and set up an art area with white paint for students to create their own "milk" design. You could use corn on the cob in the art center to make creative designs on paper. (roll the corn, stamp with the corn cut in half, etc)</p> <p>During your math block, you could use small football or bee shaped erasers as counters for a ten frame. The ideas are endless! Make connections wherever possible.</p> <p><u>http://www.survivalbased.com/survival-blog/6746/honey-prices-soar-as-colony-collapse-disorder-worsens-and-the-bee-population-declines/</u></p> <p><u>http://www.utahcountybeekeepers.org/fun_facts.html</u></p> <p><u>http://www.statesymbolsusa.org/symbol-official-item/nebraska/state-insect/honeybee</u></p> <p><u>http://www.ereferencedesk.com/resources/state-symbols/nebraska/beverage.html</u></p> <p><u>http://www.agweb.com/article/nebraska-works-to-recruit-dairy-farmers-from-other-states--naa-associated-press/</u></p> <p><u>http://www.statesymbolsusa.org/symbol-official-item/nebraska/state-nickname/cornhusker-state</u></p> <p><u>http://netnebraska.org/article/news/942627/harvest-corn-huskers-still-pick-hand</u></p> <p><u>http://www.huskers.com/ViewArticle.dbml?ATCLID=734</u></p> <p><u>http://bleacherreport.com/articles/2482760-nebraska-football-five-toughest-ops-huskers-will-face-in-2015</u></p> <p><u>https://www.youtube.com/watch?v=iT6lQx26eHk</u></p>

Nebraska's State Insect:



Honeybee

- The honeybee was chosen as Nebraska's state insect because of its important role in agriculture.
- Honeybees never sleep!
- There are 3 types of honeybees: Queen, Worker and Drone.
- Honeybees are the only insect that produce food for humans – honey!
- To make one pound of honey, the bees in the colony must visit 2 million flowers, fly over 55,000 miles, and will be the lifetime work of 768 bees.

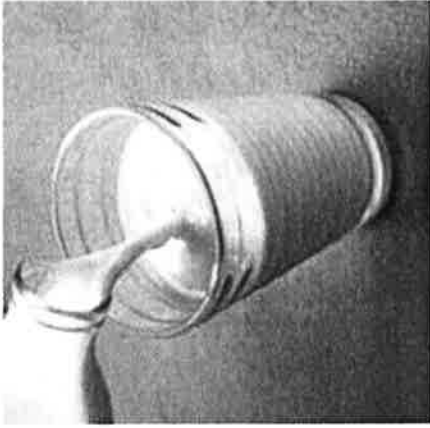


<http://www.survivalbased.com/survival-blog/5746/honey-prices-soar-as-colony-collapse-disorder-worsens-and-the-bee-population-declines/>

http://www.utahcountvbeekeepers.org/fun_facts.html

<http://www.statesymbolsusa.org/symbol-official-item/nebraska/state-insect/honeybee>

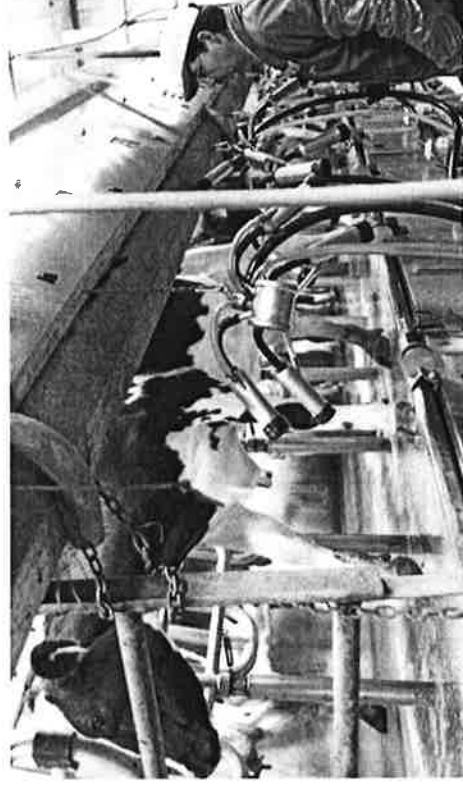
Nebraska's State Beverage:



Milk

- Milk was chosen as Nebraska's state beverage because the dairy industry is an important part of our agricultural economy.
- More than **97 million gallons** of milk is produced **each month** in Nebraska.
- Nebraska farms generate more than **\$232 million** in milk sales annually.

- In Nebraska, the average dairy cow produces **7 gallons** of milk **each day**.
- It takes about **48 hours** for the milk to travel from the farm to the dairy case.



Nebraska's Nickname:

The “Cornhusker State”

- Nebraska was nicknamed the Cornhusker state because husking corn was done by hand by early settlers before husking machines were invented.
- The term “cornhusker” comes from the method of harvesting or “husking” corn by hand, which was common in Nebraska before the invention of husking machinery.



- It was only fitting that after 1900, Nebraska's football team would change its name to the Cornhuskers.

<http://www.statesymbolsusa.org/symbol/official-item/nebraska/4states-nickname/cornhuskerstate>

<http://netnebraska.org/article/news/6947677/harvest-corn-huskers-still-sick-hand>

<http://www.huskers.com/ViewArticle.aspx?id=734>

<http://bleacherreport.com/articles/2482760-nebraska-football-five-toughest-obs-cornhuskers-will-face-in-2015>

