
**NEBRASKA SPECIAL EDUCATION
ADVISORY COUNCIL**

SEAC

Annual Report

2014-15



Nebraska Department of Education
301 Centennial Mall South
Lincoln, NE 68509-4987



Nebraska Department of Education

Matthew Blomstedt, PhD
Commissioner of Education

Gary M. Sherman
Special Education Administrator

Ann C. Bird
SEAC Facilitator

Karen Hoffman
SEAC Recorder

Reflections from the Chair



The Nebraska Special Education Advisory Council brings together a group of individuals who, collectively, work to ensure that children with disabilities in Nebraska receive the high quality education and related services that they are promised. Parents, teachers, school administrators, higher education professionals and representatives of several state agencies come together four times each year to listen, discuss, advise and recommend policy and practice affecting children throughout our state.

The growth in leadership of Council members was apparent throughout the year. The learning curve is steep, with a sometimes staggering volume of material to consume and discuss. Council members take their responsibility seriously and came prepared and ready to work to accomplish the workscope of each agenda. With the guidance and direction of the staff from the Nebraska Department of Education Special Education Office, information was presented in a concise yet comprehensive fashion that allows the Council to work through complex material during the course of each full-day meeting.

We accomplished much this year, and I expect SEAC will see more critical issues come before them during the next year. I have great confidence that Nebraska's children with disabilities will continue to have quality educational services made available to them regardless of where they live in our state. The members of the Special Education Advisory Council will guarantee that.

Sincerely yours,
Cindy Ellis
Dr. Cindy Ellis
SEAC Chair 2015

What Is SEAC?

Special Education Advisory Council (SEAC)

The Special Education Advisory Council (SEAC) is an advisory panel established to provide policy guidance with respect to special education and related services for children with disabilities. The responsibilities of SEAC include becoming knowledgeable about research-based educational practices and reviewing Nebraska Department of Education, Office of Special Education activities designed to improve outcomes for children with disabilities.

Members are selected for a term of four years, and seek information from the perspectives of their constituency groups. Members represent parents and a broad array of professional expertise. SEAC serves in an advisory capacity to the NDE Office of Special Education, the Commissioner of Education, and to the Nebraska State Board of Education.

The responsibility of each Council member is to advise, (i.e. inform, counsel, recommend, suggest or guide) the Department of Education, not to advocate for individual issues. Recommendations are made by SEAC for the consideration and possible action by the NDE Office of Special Education and the State Board.



Retiring SEAC members Ryan O'Grady, JoAnne Roberts, and Brenda McNiff, with Gary Sherman, NDE Special Education Office Administrator

Regulatory Authority

By the authority of the Individuals with Disabilities Education Act of 2004, each state is required to have a state advisory panel that provides policy guidance in the area of serving children with disabilities. The IDEA regulations specify the duties and make-up of each state advisory panel. In Nebraska, this panel is called the Nebraska Special Education Council.

Excerpts from the Federal Individuals with Disabilities Education Act of 2004 IDEA

I. Regulatory Authority for Committee

Sec. 1412(21)(A) State Advisory Panel

- a. The State has established and maintains an advisory panel for the purpose of providing policy guidance with respect to special education and related services for children with disabilities in the State.

II. Committee

Sec. 1412(21)(D)

(D) The state advisory panel shall –

- (i) Advise the state education agency of unmet needs within the state in the education of children with disabilities;
- (ii) comment publicly on the state plan and rules or regulations proposed for issuance by the state regarding the education of children with disabilities;
- (iii) advise the State educational agency in developing evaluations and reporting on data to the Secretary under section 618;
- (iv) advise the State educational agency in developing corrective action plans to address findings identified in Federal monitoring reports under this part; and
- (v) advise the State educational agency in developing and implementing policies relating to the coordination of services for children with disabilities.

2014-15 SEAC MEMBERSHIP

Frank Adams fradams1@wsc.edu	Wayne, NE	(iii)	2017	3
John Bright john.bright@ops.org	Omaha, NE	(iv)	2016	4
Diane Bruha diane@creteschools.org	Crete, NE	(v)	2017	5
Millie Demuth millie@nsecu.org	Lincoln, NE	(i)	2014	1
▣Cindy Ellis cellis@unmc.edu	Omaha, NE	(i), (iii), (vi)	2016	4
Barb Gentrup Barb.gentrup@gibbonpublic.org	Ravenna, NE	(i), (ii)	2018	6
Queen Greene qgreene@cox.net	Omaha, NE	(i)	2016	4
Judy Hall jhall@hastings.edu	Hastings, NE	(iii)	2016	5
Debbie Healey d7healey@cox.net	LaVista, NE	(i)	2016	2
Jody Hitesman jhitesman@esu9.org	Juniata, NE	(viii)	2017	6
Terry Houlton thoulton@mpsomaha.org	Omaha, NE	(v)	2018	2
Kami Jessop Jessop.kami@westside66.net	Omaha, NE	(v)	2015	1
◆Cate Jones-Hazledine drcate@westernnebraskabehavioralhealth.com	Rushville, NE	(i), (iv)	2018	7
Mary Jorgensen maryjorgensen@fnni.com	Omaha, NE	(i)	2014	2
Renee Kiernan Rkiernan123@gmail.com	Papillion, NE	(i)	2018	2
Emily Kluver emily.kluver@nebraska.gov	Lincoln, NE	(ix)	2017	1
Kristen Larsen kristen.larsen@nebraska.gov	Lincoln, NE	(vi)	2015	1
Steve Larsen slarsen@scottsbuffcounty.org	Mitchell, NE	(x)	2016	7
Brenda McNiff bmcnifficent@yahoo.com	Beatrice, NE	(i) (v)	2015	5
Ryan O'Grady rogrady@gips.org	Grand Island, NE	(v)	2015	6
Kasey Pestel kapest01@wsc.edu	Wisner, NE	(i)	2014	3
Graciela Sharif gsharif@pti-nebraska.org	Omaha, NE	(i), (vi)	2017	8
Fr. Lawrence Stoley fr.lawrence-stoley@cdolinc.net	Seward, NE	(vii)	2016	5
◆Carey Winkler cwinkler@les.com	Lincoln, NE	(i)	2017	1
Marie Wohlers mmwohlers@gmail.com	Crawford, NE	(i)	2015	7
Brian Wojcik wojickbw@unk.org	Kearney, NE	(iii)	2015	6

▣SEAC Chair ◆SEAC Executive Committee (See Membership requirements (categories) on next page)

SEAC Membership Requirements

Categories of Required Representation

**(Excerpts from the federal Individuals with Disabilities Education Act – IDEA)
Sec. 1412(21)(B)**

(B) Membership – Such advisory panel shall consist of members appointed by the Governor, or any other official authorized under State law to make such appointments, be representative of the State population, and be composed of individuals involved in, or concerned with, the education of children with disabilities, including—

- (i) parents of children with disabilities (ages birth through 26); or Individuals with disabilities;
- (ii) teachers;
- (iii) representatives of institutions of higher education that prepare special education and related services personnel;
- (iv) State and local educational officials who carry out activities under Homeless Assistance Act;
- (v) administrators of programs for children with disabilities;
- (vi) representatives of other State agencies involved in the financing or delivery of related services to children with disabilities;
- (vii) representatives of private schools and public charter schools;
- (viii) not less than one representative of a vocational, community, or business organization concerned with the provision of transition services to children with disabilities; and
- (ix) a representative from the State child welfare agency responsible for foster care; and
- (x) representatives from the State juvenile and adult corrections agencies. Special Rule – a majority of the members of the panel shall be individuals with disabilities or parents of children with disabilities.

Special Rules – a majority of the members of the panel shall be individuals with disabilities or parents of children with disabilities (ages birth through 26).

Excerpt from Nebraska Special Education Advisory Council Operating Procedures
Article II, Sec. B

The members shall be selected so as to represent all eight of the State Board of Education election districts. The Council voting membership shall not be fewer than 15 members.

SEAC PRIORITIES 2012-15

For the purpose of providing policy guidance to the Nebraska Department of Education with respect to special education and related services for children with disabilities, the following priorities were established for 2012-13 through 2014-15:

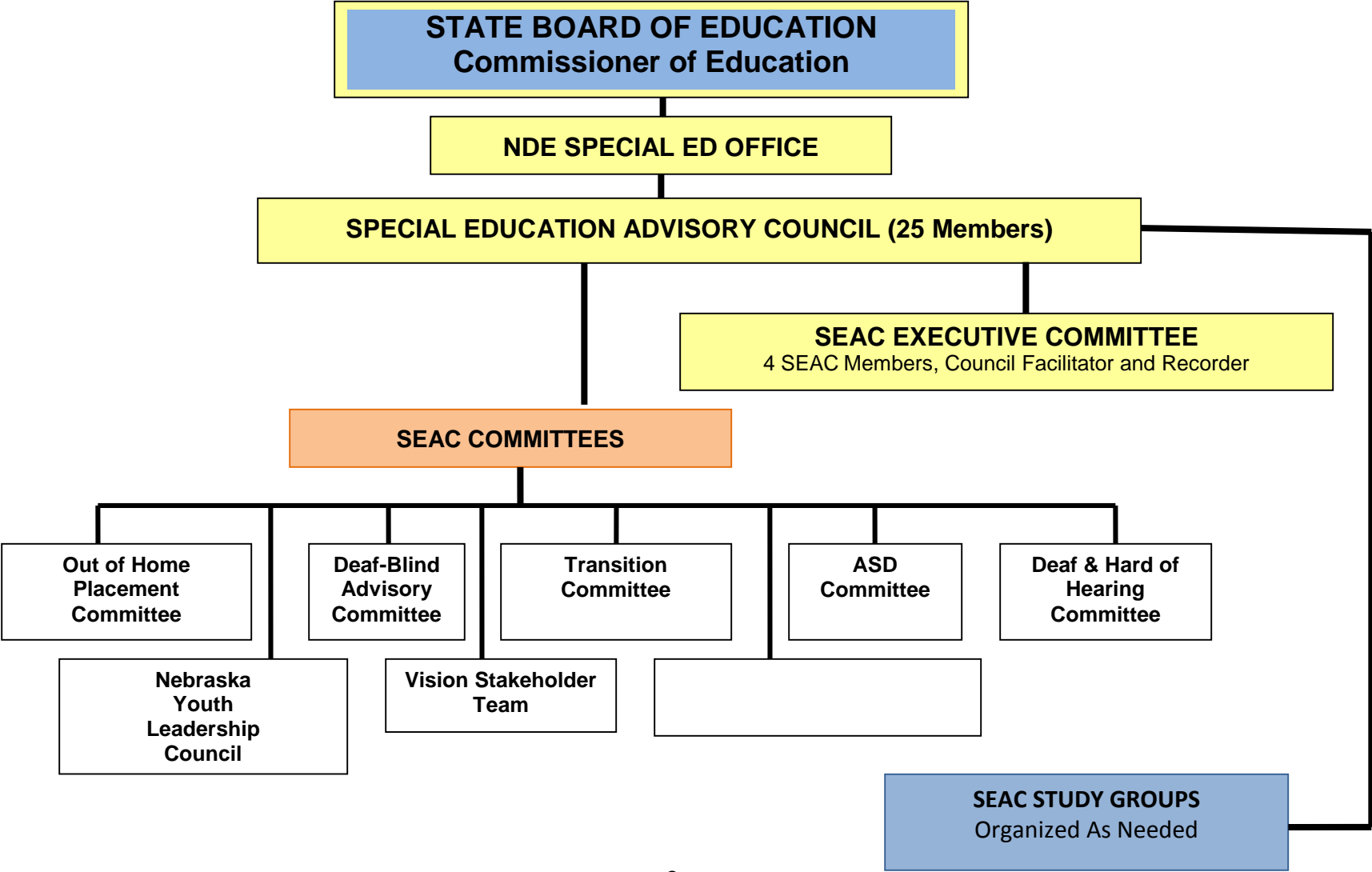
- ❖ To participate in the development, review and revision of the State Performance Plan (SPP) 2011-17 including:
 - **Impact Area 1:** Improving Academic Achievement, Functional Outcomes and Child Outcomes in Natural and Inclusive Environments
 - **Impact Area 2:** Improving Communication and Relationships Among Families, Schools, Communities and Agencies
 - **Impact Area 3:** Improving Transitions from the Early Development Network to Preschool and School to Adult Living
 - **Impact Area 4:** Improving Accountability and General Supervision

- ❖ To review the effectiveness of the current State Performance Plan (SPP) through the analysis of data in the Annual Performance Report (SPR) to determine that Nebraska is demonstrating continuous improvement in the compliance and results indicators, in response to OSEP's change in emphasis from compliance to results

- ❖ To monitor state and federal legislation, including the Reauthorization of the Elementary and Secondary Education Act (ESEA) and the Individuals with Disabilities Education Act (IDEA) to assure:
 - Linkage between ESEA and IDEA (including but not limited to: Response to Intervention, ChildFind, Assessment and Progress Monitoring)
 - Individual rights of students with disabilities

- ❖ To support the initiatives established during the 2012 OSEP Validation visit:
 - Re-entry Initiative: Engaging Out of School Youth
 - Increase of the MDT Rates for Infants and Toddlers

SPECIAL EDUCATION ADVISORY COUNCIL STRUCTURE



Reviewing the Work of SEAC 2014-15

The Special Education Advisory Council met for four regularly scheduled meetings throughout the year, with a new member orientation meeting conducted prior to the first meeting of the year. The Council met on: September 17, 2014, November 20, 2014, January 15, 2015 and April 16, 2015.

The 2013-14 SEAC year began on September 16th, with an Orientation training session for the new members joining the Council. The SEAC Orientation Manual and the SEAC Primer were used as instructional tools to acquaint new members with the mission of SEAC and the procedures followed during each meeting. A glossary of important terms was reviewed to give new members an opportunity to familiarize themselves with the typical vocabulary used during SEAC meetings and activities. New Council members reviewed the SEAC Priorities for 2012-15 and received an overview of Nebraska's State Performance Plan and the Annual Performance Report.

Throughout the year, SEAC reviewed prior to, or at each meeting, the progress of the following SEAC Committees and their initiatives and activities:

- Deaf/Blind Committee
- Autism Spectrum Disorders Committee
- Out of Home Placement Committee
- Regional Programs for Children Who Are Deaf or Hard of Hearing
- Nebraska Youth Leadership Council
- Transition Advisory Committee
- Vision Stakeholder Team

As part of the materials and agenda for all SEAC meetings, information was provided regarding the following:

- Due process case reports and Nebraska legislation
- Annual Performance Report updates
- State Performance Plan updates
- School district determinations and public reporting status
- ILCD (Monitoring) Procedures

The SEAC Priorities for 2012-2015 below, shaped the foundation for the construction of each SEAC Meeting Agenda:

For the purpose of providing policy guidance to the Nebraska Department of Education with respect to special education and related services for children with disabilities, the following priorities are established for 2012-13 through 2014-15:

- ❖ To participate in the development, review and revision of the State Performance Plan (SPP) 2011-17 including:
 - **Impact Area 1:** Improving Academic Achievement, Functional Outcomes and Child Outcomes in Natural and Inclusive Environments
 - **Impact Area 2:** Improving Communication and Relationships Among Families, Schools, Communities and Agencies
 - **Impact Area 3:** Improving Transitions from the Early Development Network to Preschool and School to Adult Living
 - **Impact Area 4:** Improving Accountability and General Supervision
- ❖ To review the effectiveness of the current State Performance Plan (SPP) through the analysis of data in the Annual Performance Report (APR) to determine that Nebraska is demonstrating continuous improvement in the compliance and results indicators, in response to OSEP's change in emphasis from compliance to results
- ❖ To monitor state and federal legislation, including the Reauthorization of the Elementary and Secondary Education Act (ESEA) and the Individuals with Disabilities Education Act (IDEA) to assure:
 - Linkage between ESEA and IDEA (including but not limited to: Response to Intervention, ChildFind, Assessment and Progress Monitoring)
 - Individual rights of students with disabilities
- ❖ To support the initiatives established during the 2012 OSEP Validation visit:
 - Re-entry Initiative: Engaging Out of School Youth
 - Increase of the MDT Rates for Infants and Toddlers

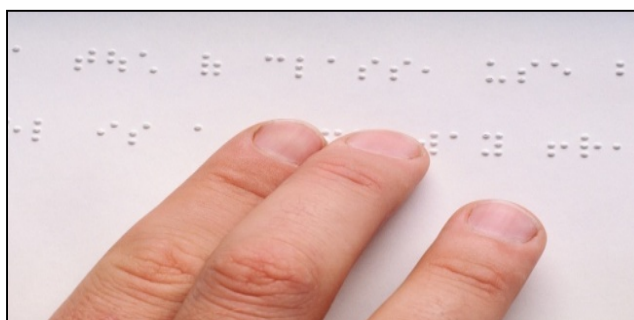
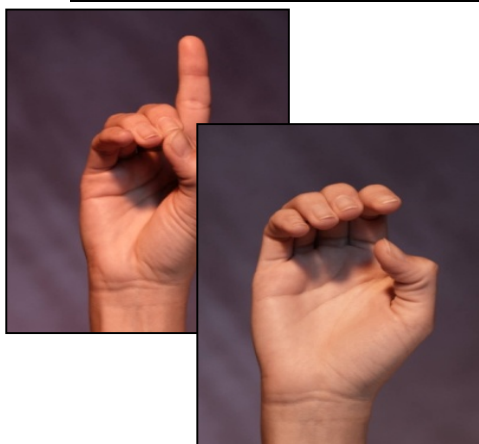
All SEAC business related to one or more of the above priorities, with regular input from the four Special Education Office Leadership Teams. SEAC revised and approved new priorities for the years 2015-2018.

SEAC Committees 2014-2015

ADVISORY COMMITTEE FOR DEAF-BLINDNESS

The Advisory Committee for Deaf-Blindness was originally established as a requirement of the Office of Special Education Programs (OSEP) federal grant. The purpose of this committee is to provide input and guidance on grant activities and evaluation. The Advisory Committee for Deaf-Blindness, as well as the Technical Assistance Team, meets a minimum of two times per year and offers input and support to all grant activities

Name	Representation	City
Donna Aksamit	Evaluator/Consultant	Lincoln
Marge Beatty	Administrator, ESU#16	Ogallala
David Conway	Assoc. Dean, College of Education, UNO	Omaha
Kimberly Davis	NE Commission for D/HH	Lincoln
Julie Delkamiller	UNO SpEd and Communication Disorders	Omaha
Nancy Flearl	Supervisor, NE Comm.Blind/VI	Omaha
Penny Gildea	Parent, Building Bright Futures	Omaha
Sally Giittinger	Administrator, NCECBVI	Nebraska City
Tanya Hilligoss	Supervisor, Lincoln Public Schools	Lincoln
Tessa McCarthy	UNL VI Program	Lincoln
Julie McGuire	DB Parent Leadership Team	Omaha
Diane Meyer	Coordinator, Metro Regional Programs Deaf/HH	Omaha
Norma Mercer	Parent, NE Sp. Ed. Advisory Council (SEAC)	Beatrice
Sharon Orduna	Nebraska PTI	Omaha
Ellin Siegel	Associate Professor, UNL	Lincoln
Jennifer Stuhmer	Parent, DB Parent Leadership Team	Lincoln
Teresa Coonts	NDE Project Director	Omaha
Barbara Remmen	TA Consultant	Omaha



DEAF AND HARD OF HEARING COMMITTEE

The Deaf and Hard of Hearing Committee is composed of stakeholders representing D/HH Regional Programs, parents, LEA administrators, Nebraska School for the Deaf alumni, higher education, and agencies providing services to children who are deaf and hard of hearing. Committee members present information about the activities of their organizations. The Committee meets two times each year. The purpose is to coordinate and prevent redundancy of services and activities, as well as to gather input regarding services for and activities of youth with hearing impairments.

Name	Representation	City
Laura Barrett	Central Western Nebraska Partnership	Scottsbluff
Frances Beurivage	Boys Town National Research Hospital	Omaha
Jill Bird	Southeast NE Regional Program	Lincoln
Pat Bracken	Voc Rehab	Lincoln
Jorja Brazda Witters	Omaha Public Schools	Omaha
Mike Brummer	Metro Regional Program	Omaha
Teresa Coonts	NDE Low Incidence Team Leader	Omaha
Sue Czaplewski	Central Western Nebraska Partnership	Hastings
Lindsay Darnall, Jr.	NeAD	Polk
Julie Delkamiller	UNO	Omaha
Millie Demuth	SEAC Representative	Lincoln
Malinda Eccarius	UNL	Lincoln
Sheri Harrington	NeRID	Lincoln
Frank Hebenstreit	Norfolk Public Schools	Norfolk
Wendy Herrold	Southeast NE Regional Program	Lincoln
Jill Hoffart	Northeast Regional Program	Norfolk
Paula Hopkins	Omaha Public Schools	Omaha
Stacy Luther	Nebraska Hands and Voices	Omaha
Diane Meyer	Metro Regional Program	Omaha
Donna Moss	Hastings Public Schools	Hastings
Kathy Northrop	NE-EHDI	Lincoln
Sara Peterson	ESU #13	Scottsbluff
Colleen Richart	GBYS	
Peter Seiler	NE Commission for the Deaf or Hard of Hearing	Lincoln
Mike Steinwart	SEAC Representative	Cozad
Deb Vapenik	ESU #16	North Platte
Rosie Westerhold	SNRP	Lincoln
Alison Winkler	Westside Community Schools	Omaha
Rhonda Fleischer	Facilitator, Nebr. Dept. of Education,	Hastings

TRANSITION ADVISORY COMMITTEE

The Transition Advisory Committee meets three times a year to discuss statewide topics related to the transition of students from high school to adult living. Recommendations are collected from this committee specific to state planning for trainings, technical assistance resources, and state procedures for collecting and analyzing specific transition data.

Name	Representation	City
Kristi Arlt	Transition Specialist ESU #2	Fremont
Jan Barber	ESU #13	Scottsbluff
Kristi Berst	NE Youth Leadership Council Facilitator	Omaha
Anne Marie Boose	Transition Supervisor OPS	Omaha
Veva Cheney	University of Nebraska-Lincoln	Lincoln
Lou Cox-Fornander	Transition Specialist ESU #16	Ogallala
Sharon Dalrymple	Families Inspiring Families	Lincoln
Barb Fischer	Educational Service Unit #9 Grant Coordinator	Hastings
Janice Flegle	UNMC-Munroe Meyer Institute OT	Omaha
Lloya Fritz	Consultant	Lincoln
Patty Galbraith	Consultant	Grand Island
Cindy Hahn	Disability Services Counselor – Central Comm. College	Hastings
Rita Hammitt	NDE - Committee Chair	LaVista
Jody Hitesman	Educational Service Unit #9	Hastings
Linda Jespersen	Parent	Alliance
Becky Koenig	Millard Public Schools	Omaha
Mark Mason	Voc Rehab (Committee Co-Chair)	Lincoln
Kris McMullen	Community Based Instruction, GI Public Schools	Grand Island
Maggie Mintken	CNSSP, SEAC Representative	Grand Island
Dr. Teri Ourada	Lincoln Public Schools	Lincoln
Daria Pierorazio	Program Supervisor, CNSSP	Grand Island
Victoria Rasmussen	Director, Client Assistance Program	Lincoln
Sue VanHousen	ESU #7	Columbus
Dr. Pearl VanZandt	NCBVI	Lincoln





NEBRASKA YOUTH LEADERSHIP COUNCIL (NYLC)

The Nebraska Youth Leadership Council (NYLC) has been in place as a SEAC Committee since 2008. The NYLC is comprised of students ages 15-21 years with various disabilities who live across Nebraska. The NYLC provides input from the student perspective regarding school services and employment, including academic, social, and transition activities.

Name	City
Jessica Barrett	Morrill
Andre Braun	Morrill
Abbey Buettgenbach	Pierce
Forrest Burroughs	Lincoln
Nicole Daake	Elwood
Justyn Free	Lincoln
Addy Geier-Hunter	Omaha
Gina Geiger	York
Brice Hilfiker	David City
Megan Hoelt	David City
Brionna Hoos	Grand Island
Kenneth Hoselton	Grand Island
Cory Hutchinson	Bridgeport
Samantha Jacobsen	Bellwood
Melissa Kepler	Oshkosh
Ryan Kile	Lawrence
Jamie Krien	Waverly
Travis O'Connell	Hastings
Bruce Peoples, II	Papillion
Kasey Pestel	Wisner
Kaylee Pierce	David City
Adam Scott	Gering
Christina Stolp	Omaha
Julia Sullivan	Aurora
Nicole Sullivan	Pierce
Justin Valentine	Bellevue
Haley Waggoner	Lincoln
Cassidy Wall	Ashland
Maggie Wolfe	York
Tanner Wolfe	York
Clarissah Woten	Omaha
Denise Bengston, Co-Facilitator	Grand Island
Kristi Berst, Facilitator	Nebraska Department of Education

COMMITTEE ON THE EDUCATION OF STUDENTS IN OUT OF HOME PLACEMENTS

Name	Representation	City
Brad Alexander	Douglas Co. Youth Center	Omaha
David Baisinger	Nebraska Youth Academy	Hastings
Carolyn Brown	Envisions of Norfolk	Norfolk
Dave Erb	Northeast Nebraska Juvenile Services, Inc.	Madison
Randy Farmer	Pathfinder Education Program YSC	Lincoln
Vicki Fehringer	Waverly Public Schools	Waverly
DeDe Frisch	South Sioux City Community Schools	So. Sioux City
Patrick Garcia	Epworth Village	York
Scott Gregory	Youth Treatment and Rehab Center	Geneva
Lori Griggs	State Juvenile Probation District #20	Lincoln
Susan Harder	NE Correctional Youth Facility	Omaha
Kim Hawekotte, Chair	NE Foster Care Review Office	Lincoln
Donna Hoffman	School Counselors, NDE	Lincoln
Amy Klein	Journeys Alternatives Academy	Omaha
Emily Kluver	NE Department of Health & Human Svcs.	Lincoln
Steve Larsen	Scotts Bluff Juv. Detention Center	Mitchell
James Larson	Papillion-LaVista Public Schools	Papillion
Dave Marsh	Lincoln Public Schools	Lincoln
Tanya Martin	Boys Town	Omaha
Mark Mason	Vocational Rehabilitation, NDE	Lincoln
Ryan O'Grady	Grand Island Public Schools	Grand Island
Kristi O'Meara	Lexington Public Schools	Lexington
Judge Linda Porter	Separate Juv. Court of Lancaster County	Lincoln
Dawn Rockey	CASA of Lancaster County	Lincoln
Cassy Rockwell	Project Everlast- NE Children & Fam. Fdn.	Lincoln
Steve Snodgrass	Ralston Public Schools	Ralston
Michele Borg	Committee Facilitator	Douglas
Pat Frost	NDE Title I Office	Lincoln

VISION STAKEHOLDER TEAM

Members of the Vision Stakeholder Team represent individuals, agencies and groups interested in the provision of educational and mobility services to students with visual impairments. Annually, the members review activities conducted by the Nebraska Center for the Education of Children Who Are Blind and Visually Impaired, including residential, education and outreach services across Nebraska.

Name	Representation	City
Jim Adams	NCECBVI*	Nebraska City
Cindy Barr-McNair	Millard Public Schools	Omaha
Jill Beckenhauer	NEAT Center	Cozad
Jorja Brazda-Witters	Omaha Public Schools	Omaha
Marg Dredla	Educational Service Unit #13	Scottsbluff
Karen Duffy	NCECBVI*	Nebraska City
Jon Fisher	Educational Service Unit #4	Auburn
Sherri Frisbie	Omaha Public Schools	Omaha
Audrey Graves	NCECBVI*	Nebraska Cit
Shelly Gray	Consumer	Omaha
Elissa Heibel	ESU #7	Albion
Tanya Hilligoss	Lincoln Public Schools	Lincoln
Jason Hippen	Nebraska City Public Schools	Nebraska City
Wendy Kemling	Scottsbluff Public Schools	Scottsbluff
Constance (Coni) Kersch	Educational Service Unit #8	O'Neill
Jean Loberg	Parent	Wayne
Barb Loos	Consumer	Lincoln
Tessa McCarthy	UNL	Lincoln
Jill McCaslin-Timmons	Lincoln Public Schools	Lincoln
Norma Mercer	Parent	Beatrice
Jane Moody	Educational Service Unit #11	Holdrege
Patti Neill	ATP	Cozad
Mary Robinson	Fremont Public Schools	Fremont
Leon Schiermeyer,	Region V	Nebraska City
Troy and Nancy Solsaa	Parents	Waverly
Pearl Van Zandt	NE Comm.-Blind and Visually Impaired	Lincoln
Cheryl Wichman	Parent	Nebraska City
Sharon Wordekemper	McCook Public Schools	McCook
Teresa Coonts	Facilitator, NDE Special Education Office	Omaha
Sally Giittinger	Facilitator, NCECBVI*	Nebraska City

**Nebraska Center for the Education of Children Who Are Blind and Visually Impaired*

AUTISM SPECTRUM DISORDERS (ASD) COMMITTEE



The ASD Committee provides advice to NDE, the Special Education Advisory Council (SEAC), and the University of Nebraska (UNL) concerning the following:

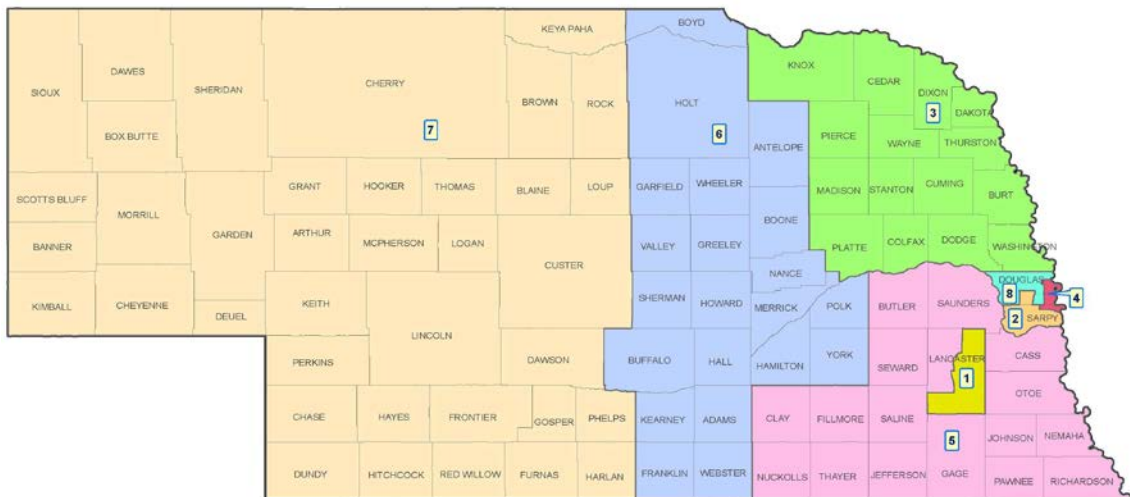
- The ASD Network’s role in teaching the delivery of appropriate services for children with autism spectrum disorders (ASD);
- The review of current pertinent research and information regarding methodologies and delivery systems for ASD;
- The review of all due process trends associated with children with ASD;
- Recommendations for ASD training of educators, parents and community; and
- Recommendations for ASD teaching competencies/standards.

Name	Representation	City
Keri Bennett	Vocational Rehabilitation	Kearney
Bethany Brunsmann	Lincoln Public Schools	Lincoln
Rebecca Eckhardt	So. Sioux City Public Schools	So. Sioux City
Dr. Cindy Ellis	UNMC-MMI	Omaha
Rene Ferdinand	Autism Center of Nebraska	Omaha
Nancy Meyer	ESU 6 Special Services	Milford
Brittney Phillips	Parent/HHS Family Services Specialist	Sidney
Larriane Polk	Special Education Director ESU #7	Columbus
Cara Small	ESU 6 Early Childhood Specialist	Milford
Lenette Sprunk	ESUs 5, 6 and 7 Assistive Tech Specialist	Columbus
Torri Tejral	Autism Leadership Academy Coordinator	Omaha
Tammy Voisin	Papillion-LaVista Public Schools	Papillion
Staff	Agency	City
Teresa Coonts	Facilitator, NDE Special Education Office	Omaha
Sonja Chatfield-Peetz	ASD Northeast Region Coordinator	Columbus
Kelly Anne Ergle	ASD Western Region Coordinator	Scottsbluff
Terri McGill	ASD Metro Region Coordinator	Omaha
Megan Misegadis	ASD Network Assistant/Parent	Lincoln
Dawna Sigurdson	ASD Central Region Coordinator	Kearney
Melissa Trautman	ASD Southeast Region Coordinator	Milford
Annette Wragge	Facilitator, ASD Network Coordinator	Lincoln

NEBRASKA STATE BOARD OF EDUCATION

District	State Board Member
1	Lillie Larsen, Vice President
2	Glen Flint
3	Rachel Wise, President
4	John Witzel
5	Patricia Timm
6	Maureen Nickels
7	Molly O'Holleran
8	Patrick McPherson
	Matthew Blomstedt, Ph.D Commissioner of Education

Nebraska State Board of Education District Map



Funded By
Nebraska Department of Education Part B Funds
Grant H027A140079

Copies of this report and additional information regarding the
Special Education Advisory Council and the
Nebraska Department of Education's Special Education Office can be obtained at:
<http://www.education.ne.gov/SPED/sped.html>