

---

---

# **NEBRASKA SPECIAL EDUCATION ADVISORY COUNCIL**

## **SEAC Annual Report 2012-13**



Nebraska Department of Education  
301 Centennial Mall South  
Lincoln, NE 68509-4987

---

---



# Nebraska Department of Education

**Roger Breed, Ed.D.**  
*Commissioner of Education*

**Gary M. Sherman**  
*Special Education Administrator*

**Ann C. Bird**  
*SEAC Facilitator*

**Pam Kasl**  
*SEAC Recorder*

---

---

## Reflections from the Chair



The past four years have provided a wonderful experience for me to work with the members of the Nebraska Special Education Advisory Council, as well as staff from the Nebraska Department of Education. I feel like I have learned more than I have contributed during my tenure on SEAC; I complete my term, able to walk away with a broader knowledge of the numerous elements that ensure Nebraska's children with disabilities receive a quality education. Thank you to the many talented and dedicated parents and professionals who have served with me, and to those who will continue to advise and support NDE. I am confident that the Council will continue their work, assuring that children with disabilities receive appropriate services, in alignment with the State Performance Plan, as measured by the Annual Performance Report.

The collaboration between the Special Education Advisory Council and the NDE Special Education Office is effective in providing the necessary information and contributing the essential feedback regarding current issues and trends. This partnership has proven to yield a positive outcome for children throughout the state. The expertise of the NDE staff, as well as the members of the Council, has made this a beneficial learning experience.

I appreciate the opportunity to serve on the SEAC Executive Committee, and to serve as the Council Chair for 2012-13. Thank you to the Council members, and I wish future Councils the same success we have enjoyed for the past four years.

Respectfully submitted,

*Mike Steinwart*

SEAC Chair 2012-2013

# What Is SEAC?

## Special Education Advisory Council (SEAC)

The Special Education Advisory Council (SEAC) is an advisory panel established to provide policy guidance with respect to special education and related services for children with disabilities. The responsibilities of SEAC include becoming knowledgeable about research-based educational practices and reviewing Nebraska Department of Education, Office of Special Education activities designed to improve outcomes for children with disabilities.

Members are selected for a term of four years, and seek information from the perspectives of their constituency groups. Members represent parents and a broad array of professional expertise. SEAC serves in an advisory capacity to the NDE Office of Special Education, the Commissioner of Education, and to the Nebraska State Board of Education.

The responsibility of each Council member is to advise, (i.e. inform, counsel, recommend, suggest or guide) the Department of Education, not to advocate for individual issues. Recommendations are made by SEAC for the consideration and possible action by the NDE Office of Special Education and the State Board.



Retiring SEAC members Maggie Mintken, Mike Steinwart,  
Bethany Brunsman and Priscilla Beckmann

# Regulatory Authority

## **Excerpts from the Federal Individuals with Disabilities Education Act of 2004 IDEA**

### **I. Regulatory Authority for Committee**

*Sec. 1412(21)(A) State Advisory Panel*

- a. The State has established and maintains an advisory panel for the purpose of providing policy guidance with respect to special education and related services for children with disabilities in the State.

### **II. Committee**

*Sec. 1412(21)(D)*

(D) The state advisory panel shall –

- (i) Advise the state education agency of unmet needs within the state in the education of children with disabilities;
- (ii) comment publicly on the state plan and rules or regulations proposed for issuance by the state regarding the education of children with disabilities;
- (iii) advise the State educational agency in developing evaluations and reporting on data to the Secretary under section 618;
- (iv) advise the State educational agency in developing corrective action plans to address findings identified in Federal monitoring reports under this part; and
- (v) advise the State educational agency in developing and implementing policies relating to the coordination of services for children with disabilities.

## 2012-13 SEAC MEMBERSHIP

Name	City	Category	Term Expires	State Board Dist.
Priscilla Beckmann	Fremont, NE	(ii)	2013	3
John Bright	Omaha, NE	(iv)	2012	4
Diane Bruha	Crete, NE	(v)	2013	5
Bethany Brunsman	Lincoln, NE	(i) (ii)	2013	1
Janet Busse	St. Paul, NE	(i)	2012	6
Jane Byers	Waterloo, NE	(iv), (v)	2014	2
Bridget Cannon-Hale	Omaha, NE	(i) (vi)	2013	8
◆ Kelly Coleman	Omaha, NE	(i) (ii)	2014	8
Millie Demuth	Lincoln, NE	(i)	2014	1
◆ Dr. Cindy Ellis	Omaha, NE	(i) (iii) (vi)	2012	4
◆ Mary Gordon	Lincoln, NE	(vi)	2014	1
Judy Hall	Hastings, NE	(iii)	2012	5
Chris Hanus	Lincoln, NE	(ix)	2013	1
Debbie Healey	LaVista, NE	(i)	2016	2
Mary Jorgensen	Omaha, NE	(i)	2014	2
Sue Kemp	Lincoln, NE	(i) (iii)	2014	1
Jamie Krien	Waverly, NE	(i)	2012	1
Steve Larsen	Mitchell, NE	(x)	2012	7
Kris McMullen	Grand Island, NE	(ii)	2014	6
Brenda McNiff	Beatrice, NE	(i) (v)	2015	5
Norma Mercer	Beatrice, NE	(i)	2014	5
Maggie Mintken	Grand Island, NE	(viii)	2013	6
Ryan O'Grady	Grand Island,	v)	2015	6
Denise Powell	Lincoln, NE	(i)	2015	1
JoAnne Roberts	Norfolk, NE	(i) (v)	2015	3
■ Mike Steinwart	Cozad, NE	(i)	2013	7
Fr. Lawrence Stoley	Lincoln, NE	(vii)	2016	1

◆ SEAC Executive Committee

■ SEAC Chair

(See Membership requirements (categories) on next page)

# SEAC Membership Requirements

## Categories of Required Representation

### **(Excerpts from the federal Individuals with Disabilities Education Act – IDEA) Sec. 1412(21)(B)**

*(B) Membership – Such advisory panel shall consist of members appointed by the Governor, or any other official authorized under State law to make such appointments, be representative of the State population, and be composed of individuals involved in, or concerned with, the education of children with disabilities, including—*

- (i) parents of children with disabilities (ages birth through 26); or Individuals with disabilities;
- (ii) teachers;
- (iii) representatives of institutions of higher education that prepare special education and related services personnel;
- (iv) State and local educational officials who carry out activities under Homeless Assistance Act;
- (v) administrators of programs for children with disabilities;
- (vi) representatives of other State agencies involved in the financing or delivery of related services to children with disabilities;
- (vii) representatives of private schools and public charter schools;
- (viii) not less than one representative of a vocational, community, or business organization concerned with the provision of transition services to children with disabilities; and
- (ix) a representative from the State child welfare agency responsible for foster care; and
- (x) representatives from the State juvenile and adult corrections agencies. Special Rule – a majority of the members of the panel shall be individuals with disabilities or parents of children with disabilities.

*Special Rules – a majority of the members of the panel shall be individuals with disabilities or parents of children with disabilities (ages birth through 26).*

Excerpt from Nebraska Special Education Advisory Council Operating Procedures Article II, Sec. B

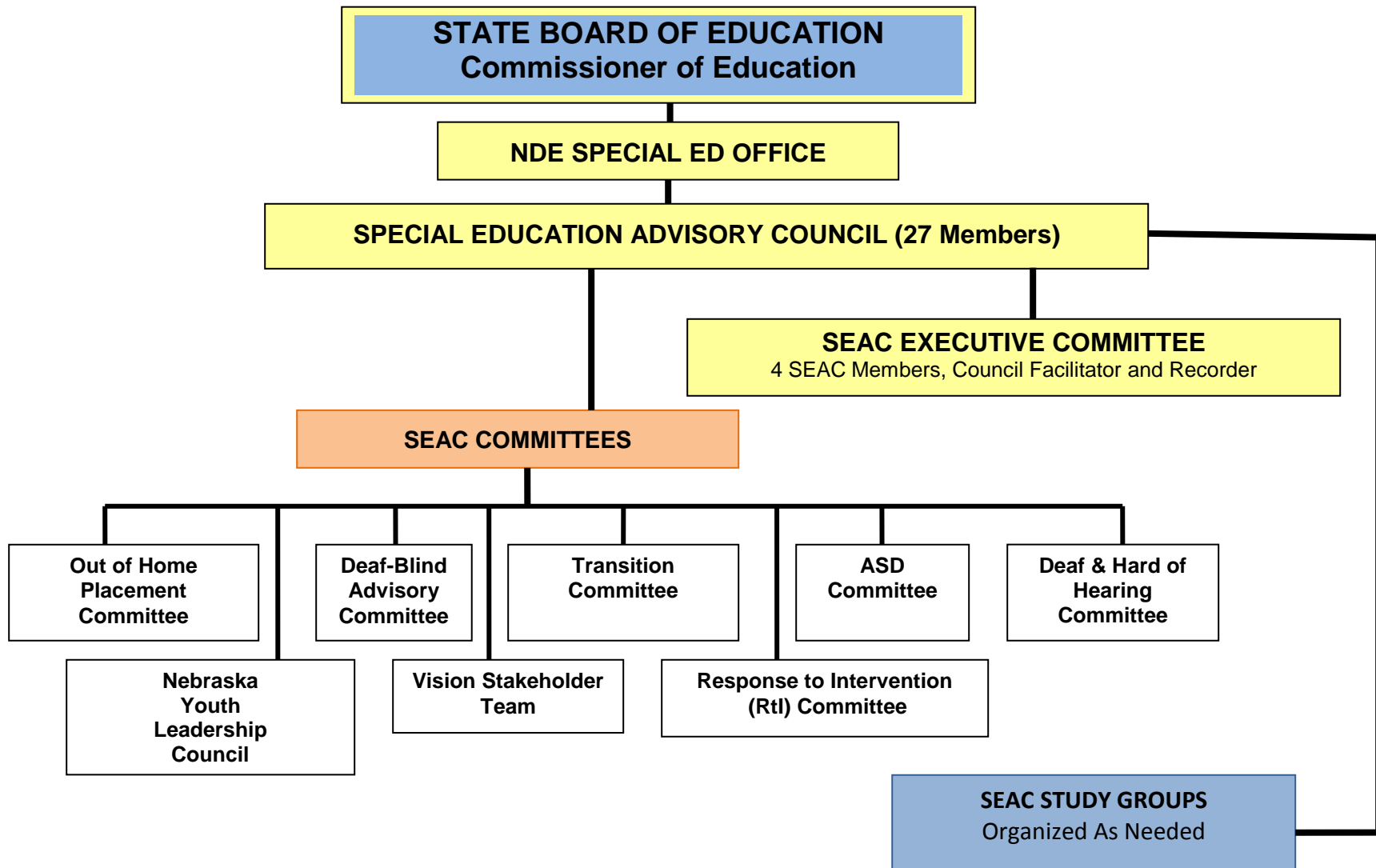
*The members shall be selected so as to represent all eight of the State Board of Education election districts. The Council voting membership shall not be fewer than 15 members.*

## SEAC PRIORITIES 2012-15

*For the purpose of providing policy guidance to the Nebraska Department of Education with respect to special education and related services for children with disabilities, the following priorities are established for 2012-13 through 2014-15:*

- ❖ To participate in the development, review and revision of the State Performance Plan (SPP) 2011-17 including:
  - **Impact Area 1:** Improving Academic Achievement, Functional Outcomes and Child Outcomes in Natural and Inclusive Environments
  - **Impact Area 2:** Improving Communication and Relationships Among Families, Schools, Communities and Agencies
  - **Impact Area 3:** Improving Transitions from the Early Development Network to Preschool and School to Adult Living
  - **Impact Area 4:** Improving Accountability and General Supervision
- ❖ To review the effectiveness of the current State Performance Plan (SPP) through the analysis of data in the Annual Performance Report (SPR) to determine that Nebraska is demonstrating continuous improvement in the compliance and results indicators, in response to OSEP's change in emphasis from compliance to results
- ❖ To monitor state and federal legislation, including the Reauthorization of the Elementary and Secondary Education Act (ESEA) and the Individuals with Disabilities Education Act (IDEA) to assure:
  - Linkage between ESEA and IDEA (including but not limited to: Response to Intervention, ChildFind, Assessment and Progress Monitoring)
  - Individual rights of students with disabilities
- ❖ To support the initiatives established during the 2012 OSEP Validation visit:
  - Re-entry Initiative: Engaging Out of School Youth
  - Increase of the MDT Rates for Infants and Toddlers

# **SPECIAL EDUCATION ADVISORY COUNCIL STRUCTURE**



## **Summary of Council Activities 2012-13**

The Special Education Advisory Council met for four regularly scheduled meetings throughout the year, with a new member orientation meeting conducted prior to the first meeting of the year. The Council met on:

September 13, 2012  
November 15, 2012  
January 17, 2013 and  
April 18, 2013.

The 2012-13 SEAC year began on September 12<sup>th</sup>, with an Orientation dinner and training session for the new members joining the Council. The SEAC Orientation Manual and the SEAC Primer were used as instructional tools to acquaint new members with the mission of SEAC and the procedures followed during each meeting. A glossary of important terms was reviewed to give new members an opportunity to familiarize themselves with the typical vocabulary used during SEAC meetings and activities. New Council members reviewed the SEAC Priorities for 2012-15 and received an overview of Nebraska's State Performance Plan and the Annual Performance Report.

Throughout the year, SEAC reviewed prior to, or at each meeting, the progress of the following SEAC Committees and their initiatives and activities:

- Deaf/Blind Committee
- Autism Spectrum Disorders Committee
- Out of Home Placement Committee
- Regional Programs for Children Who Are Deaf or Hard of Hearing
- Response to Intervention Committee
- Nebraska Youth Leadership Council
- Transition Advisory Committee
- Vision Stakeholders Committee

As part of the materials and agenda for all SEAC meeting, information was provided regarding the following:

- Due process case reports and Nebraska legislation
- Annual Performance Report updates
- State Performance Plan updates
- School district determinations and public reporting status
- ILCD (Monitoring) Procedures

A SEAC subcommittee drafted revised SEAC Priorities for 2012-2015, which were reviewed, revised and approved by the full Council at the first meeting. Below are the 2012-15 priorities:

*For the purpose of providing policy guidance to the Nebraska Department of Education with respect to special education and related services for children with disabilities, the following priorities are established for 2012-13 through 2014-15:*

- ❖ To participate in the development, review and revision of the State Performance Plan (SPP) 2011-17 including:
  - **Impact Area 1:** Improving Academic Achievement, Functional Outcomes and Child Outcomes in Natural and Inclusive Environments
  - **Impact Area 2:** Improving Communication and Relationships Among Families, Schools, Communities and Agencies
  - **Impact Area 3:** Improving Transitions from the Early Development Network to Preschool and School to Adult Living
  - **Impact Area 4:** Improving Accountability and General Supervision
- ❖ To review the effectiveness of the current State Performance Plan (SPP) through the analysis of data in the Annual Performance Report (APR) to determine that Nebraska is demonstrating continuous improvement in the compliance and results indicators, in response to OSEP's change in emphasis from compliance to results
- ❖ To monitor state and federal legislation, including the Reauthorization of the Elementary and Secondary Education Act (ESEA) and the Individuals with Disabilities Education Act (IDEA) to assure:
  - Linkage between ESEA and IDEA (including but not limited to: Response to Intervention, ChildFind, Assessment and Progress Monitoring)
  - Individual rights of students with disabilities
- ❖ To support the initiatives established during the 2012 OSEP Validation visit:
  - Re-entry Initiative: Engaging Out of School Youth
  - Increase of the MDT Rates for Infants and Toddlers

Specific highlights of each SEAC meeting include the following:

### **SEPTEMBER 13, 2012**

- 92 NAC 51 (Rule 51) is currently under revision, and the elements of that revision were shared with the Council; a new rule, 92 NAC 52 (Rule 52) is being drafted for children birth to age three. The Council will be regularly informed of the progress of these two rules and will, upon completion, be asked to comment before the State Board of Education.

- Sally Giittinger, Administrator of the Nebraska Center for the Education of Children Who Are Blind or Visually Impaired (NCECBVI), provided an overview of the programs and services offered to school districts and families, as well as the work of the SEAC Committee for Blind and Visually Impaired.
- Rita Hammitt provided information to the Council regarding changes in the procedures for psychological evaluation of young adults with disabilities.
- The criteria for credentialing special education teachers is currently under review. Carol McClain presented information regarding the process for revising this criteria and the procedures followed by the Nebraska Council on Teacher Education (NCTE). SEAC will be presented with information as these changes proceed.
- Information was announced regarding all upcoming workshops and conferences that would be beneficial for SEAC members to attend, including the Tri-State Law Conference in November. SEAC members are encouraged to attend conferences that will help them to more effectively fulfill their responsibilities on the Council; NDE will support these activities by paying registration fees.

#### **NOVEMBER 15, 2012**

- Dr. Reece Peterson, UNL Professor of Special Education, and chair of the NCTE Ad Hoc Committee for the Review of Special Education Teacher Criteria, reviewed the special education endorsement criteria that will be presented to the Nebraska Council on Teacher Education.
- Special education trend data spanning the past ten years including both state and national statistics was presented by Sara Sinani, NDE. The information provided a clear picture for SEAC members of the scope of special education services in Nebraska, and how those numbers compare to the national data.
- A profile of the special education complaint findings from 2010-2012 was presented by Lindy Foley, NDE. By comparison to national data, NDE receives a small number of special education complaints.
- An update was provided by Beth Wierda and Carol McClain regarding the status of the revisions to Rule 51 and the development of Rule 52. Hearing drafts for both rules are not ready at this time for public comment.
- Annette Wragge, State Coordinator for Autism Spectrum Disorders, presented a report to SEAC on the recent activities of the SEAC ASD Committee. She also provided a review of the draft revised ASD State Plan, and asked SEAC members to review the draft in greater depth and provide written comments. A SEAC subcommittee was established to conduct this review and submit written comments prior to SEAC's vote on the State Plan.

- Criteria for School District Determinations was presented by Jeanne Heaston, NDE, and the Council was directed to the Nebraska State of the Schools Report, published each June, for more information on the status of determinations.
- Gary Sherman, Administrator of the NDE Special Education Office, presented information to the Council on funding and current special education financial information. He described the anticipated impact of the pending “fiscal cliff”, detailing which programs in Nebraska were most vulnerable.

### **JANUARY 17, 2013**

- Dr. Roger Breed, NDE Commissioner of Education, presented information to SEAC regarding the education of all Nebraska students. He described his vision of the relationship between general and special education, and his hopes for special education over the next year.
- A Nebraska middle school student who has lived with a significant, lifelong health impairment, gave a moving presentation describing how special education services had impacted her life during extended periods in the hospital. She described how her teachers, fellow students and their families supported her during her hospital stays and transitions back to school.
- *Re-engaging Out of School Youth with Disabilities*, the IDEA Part B Results topic, was presented and reviewed by Lindy Foley. She informed the Council that a competitive grant application was available to all districts wishing to implement a project in this area.
- Gary Sherman presented a finance report detailing how Nebraska uses the Part B State Set-Aside Funds. He also explained the anticipated impact of the federal sequestration. SEAC voted to support the use of the discretionary funds for the purposes identified.
- Directors of the Parents Encouraging Parents Conference presented an overview of the 2012-13 conference agenda, and discussed the impact of this conference for parents of children with disabilities. Several members of SEAC have participated in the PEP Conference, and enthusiastically supported and endorsed the conference.
- Mary Gordon, chair of the SEAC Legislation Sub-Committee, reviewed two proposed bills before the Nebraska Unicameral.
- A report of the SEAC Committee for Deaf and Hard of Hearing was presented by Rhonda Fleischer. She described the Deaf and Hard of Hearing Regional Network, explaining that consultative services are provided to school districts within the Regional Network, as well as numerous social and networking opportunities for students who are deaf or hard of hearing.

- SEAC member Sue Kemp provided information to the Council regarding the Mentoring/Induction Program at UNL, aimed at increasing teacher success.
- Carol McClain and Jan Thelen, NDE, shared the latest work on the proposed certification/endorsement recommendations that were being presented to the Nebraska Council on Teacher Education (NCTE).
- Sara Sinani reported on the progress and slippage experienced over the past year described in the Annual Performance Report indicators.
- Parts B and C federal applications were being posted for public review prior to submission to the federal Office of Special Education Programs (OSEP). SEAC was encouraged to review and support the federal applications.
- SEAC voted to support the revised Autism Spectrum Disorders State Plan with the recommendations of the SEAC sub-committee.

#### **APRIL 18, 2013**

- Dr. Reece Peterson, UNL professor, presented the *Student Engagement Project*, which focuses on re-engaging students with disabilities who have dropped out or been suspended from school.
- A telephone interview process was used to collect data relevant to the Post-School Outcomes project. Lindy Foley presented the data to SEAC.
- Rita Hammitt, NDE, presented information to SEAC regarding the activities of the SEAC Transition Committee.
- Carol McClain shared the latest work on the proposed certification/endorsement recommendations that were being presented to the Nebraska Council on Teacher Education (NCTE). It is anticipated that the final recommendations will come before the full NCTE within the next several months.
- Tanya Ihlo, UNL, and Jeremy Christiansen, Fairbury Public Schools, presented information to SEAC regarding the efforts throughout the state regarding Response to Intervention (RtI). Tanya is part of the UNL team that provides training and support to districts who are starting an RtI program. Jeremy has been implementing the program in Fairbury over the past three years. The RtI initiatives are overseen by the SEAC Response to Intervention Committee.
- A presentation was made by SEAC members Dr. Cindy Ellis and Bridget Cannon-Hale regarding the Nebraska Act Early Autism Team. The goals of the Team were discussed, and differentiations were clarified between The Act Early Autism Team and the ASD Network.
- Carol McClain announced that the Uninterrupted Scholars Act was passed to support the Fostering Connections Act. It allows sharing of information between agencies that work with foster children so that their education programs can move forward without interruption if a child moves from one placement to another.

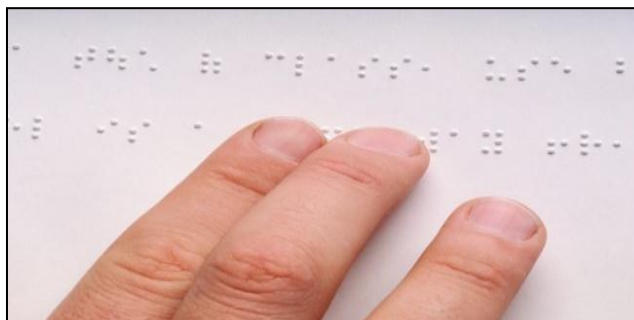
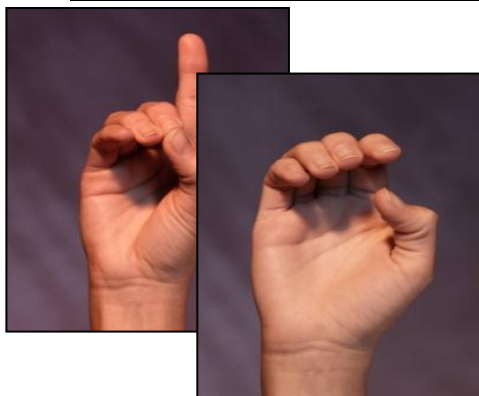
- Gary Sherman provided an update on the impact of sequestration on specific special education programs and services. Nebraska will most definitely feel the effects of sequestration as many programs will see a reduction in funding.
- Annie Bird, SEAC Facilitator and Gary Sherman recognized retiring SEAC members who had completed their terms of membership on SEAC. Mike Steinwart, SEAC Chair, Bethany Brunsman, Maggie Mintken and Perk Beckmann have completed their terms; they were thanked for their exceptional service on the Council.

## SEAC Committees 2012-2013

### ADVISORY COMMITTEE FOR DEAF-BLINDNESS

The Advisory Committee for Deaf-Blindness was originally established as a requirement of the Office of Special Education Programs (OSEP) federal grant. The purpose of this committee is to provide input and guidance on grant activities and evaluation. The Advisory Committee for Deaf-Blindness, as well as the Technical Assistance Team, meets a minimum of two times per year and offers input and support to all grant activities. The Advisory Committee for Deaf-Blindness was written into the federal grant proposal and was approved for the 5 year grant period of 2008-2013.

Name	Representation	City
Donna Aksamit	Evaluator/Consultant	Lincoln
Marge Beatty	Administrator, ESU#16	Ogallala
David Conway	Assoc. Dean, College of Education, UNO	Omaha
Kimberly Davis	NE Commission for D/HH	Lincoln
Julie Delkamiller	UNO SpEd and Communication Disorders	Omaha
Nancy Flearl	Supervisor, NE Comm.Blind/VI	Omaha
Penny Gildea	Parent, Building Bright Futures	Omaha
Sally Giittinger	Administrator, NCECBVI	Nebraska City
Tanya Hilligoss	Supervisor, Lincoln Public Schools	Lincoln
Tessa McCarthy	UNL VI Program	Lincoln
Julie McGuire	DB Parent Leadership Team	Omaha
Diane Meyer	Coordinator, Metro Regional Programs Deaf/HH	Omaha
Norma Mercer	Parent, NE Sp. Ed. Advisory Council (SEAC)	Beatrice
Sharon Orduna	Nebraska PTI	Omaha
Ellin Siegel	Associate Professor, UNL	Lincoln
Jennifer Stuhmer	Parent, DB Parent Leadership Team	Lincoln
<b>Teresa Coonts</b>	<b>NDE Project Director</b>	<b>Omaha</b>
Barbara Remmen	TA Consultant	Omaha



## DEAF AND HARD OF HEARING COMMITTEE

The Deaf and Hard of Hearing Committee is composed of stakeholders representing D/HH Regional Programs, parents, LEA administrators, Nebraska School for the Deaf alumni, higher education, and agencies providing services to children who are deaf and hard of hearing. Committee members present information about the activities of their organizations. The Committee meets two times each year. The purpose is to coordinate and prevent redundancy of services and activities, as well as to gather input.

Name	Representation	City
Laura Barrett	Central Western Nebraska Partnership	Scottsbluff
Frances Beaurivage	Boys Town National Research Hospital	Omaha
Jill Bird	Southeast NE Regional Program	Lincoln
Pat Bracken	Voc Rehab	Lincoln
Jorja Brazda Witters	Omaha Public Schools	Omaha
Mike Brummer	Metro Regional Program	Omaha
Teresa Coonts	NDE Low Incidence Team Leader	Omaha
Sue Czaplewski	Central Western Nebraska Partnership	Hastings
Lindsay Darnall, Jr.	NeAD	Polk
Julie Delkamiller	UNO	Omaha
Millie Demuth	SEAC Representative	Lincoln
Malinda Eccarius	UNL	Lincoln
Sheri Harrington	NeRID	Lincoln
Frank Hebenstreit	Norfolk Public Schools	Norfolk
Wendy Herrold	Southeast NE Regional Program	Lincoln
Jill Hoffart	Northeast Regional Program	Norfolk
Paula Hopkins	Omaha Public Schools	Omaha
Stacy Luther	Nebraska Hands and Voices	Omaha
Diane Meyer	Metro Regional Program	Omaha
Donna Moss	Hastings Public Schools	Hastings
Kathy Northrop	NE-EHDI	Lincoln
Sara Peterson	ESU #13	Scottsbluff
Colleen Richart	GBYS	
Peter Seiler	NE Commission for the Deaf or Hard of Hearing	Lincoln
Mike Steinwart	SEAC Representative	Cozad
Deb Vapenik	ESU #16	North Platte
Rosie Westerhold	SNRP	Lincoln
Alison Winkler	Westside Community Schools	Omaha
<b>Rhonda Fleischer</b>	<b>Facilitator, Nebr. Dept. of Education,</b>	<b>Hastings</b>

## TRANSITION ADVISORY COMMITTEE

The Transition Advisory Committee meets three times a year to discuss statewide topics related to the transition of students from high school to adult living. Recommendations are collected from this committee specific to state planning for trainings, technical assistance resources, and state procedures for collecting and analyzing specific transition data.

Name	Representation	City
Kristi Arlt	Transition Specialist ESU #2	Fremont
Jan Barber	ESU #13	Scottsbluff
Kristi Berst	NE Youth Leadership Council Facilitator	Omaha
Anne Marie Boose	Transition Supervisor OPS	Omaha
Veva Cheney	University of Nebraska-Lincoln	Lincoln
Lou Cox-Fornander	Transition Specialist ESU #16	Ogallala
Sharon Dalrymple	Families Inspiring Families	Lincoln
Barb Fischer	Educational Service Unit #9 Grant Coordinator	Hastings
Janice Flegle	UNMC-Munroe Meyer Institute OT	Omaha
Lloya Fritz	Consultant	Lincoln
Patty Galbraith	Consultant	Grand Island
Cindy Hahn	Disability Services Counselor – Central Comm. College	Hastings
<b>Rita Hammitt</b>	<b>NDE - Committee Chair</b>	<b>LaVista</b>
Jody Hitesman	Educational Service Unit #9	Hastings
Linda Jespersen	Parent	Alliance
Becky Koenig	Millard Public Schools	Omaha
Mark Mason	Voc Rehab (Committee Co-Chair)	Lincoln
Kris McMullen	Community Based Instruction, GI Public Schools	Grand Island
Maggie Mintken	CNSSP, SEAC Representative	Grand Island
Dr. Teri Ourada	Lincoln Public Schools	Lincoln
Daria Pierorazio	Program Supervisor, CNSSP	Grand Island
Victoria Rasmussen	Director, Client Assistance Program	Lincoln
Sue VanHousen	ESU #7	Columbus
Dr. Pearl VanZandt	NCBVI	Lincoln
<b>Lindy Foley</b>	<b>Facilitator, Nebr. Dept. of Education, Sp. Education</b>	<b>Lincoln</b>





## NEBRASKA YOUTH LEADERSHIP COUNCIL (NYLC)

The Nebraska Youth Leadership Council (NYLC) has been in place as a SEAC Committee since 2008. The NYLC is comprised of students ages 15-21 years with various disabilities who live across Nebraska. The YLC provides input from the student perspective regarding school services and employment, including academic, social, and transition activities.

Name	City
Denise Bengston, VR	Grand Island
Jessica Barrett	Morrill
Nicole Bechtel	Winslow
Natayah Bland	Papillion
Mikayla Brauer	North Platte
Abbey Buettgenback	Pierce
Forrest Burroughs	Lincoln
Nicole Daake	Elwood
Joe English	Kennard
Samantha Dye	Morrill
Justyn Free	Lincoln
Addy Geier-Hunter	Omaha
Gina Geiger	York
Brice Hilfiker	David City
Megan Hoelt	David City
Brionna Hoos	Grand Island
Kenneth Hoselton	Grand Island
Cory Hutchinson	Bridgeport
Steffie Ingram	Lincoln
Samantha Jacobsen	Bellwood
Melissa Kepler	Oshkosh
Jamie Krien	Waverly
Samantha Lemke	Lawrence
Emily Osborn	David City
Bruce Peoples, II	Papillion
Kasey Pestel	Wisner
Gina Poncelet	Gering
Christina Stolp	Omaha
Julia Sullivan	Aurora
Nicole Sullivan	Pierce
Justin Valentine	Bellevue
Haley Waggoner	Lincoln
Sharon Ward	Omaha
Maggie Wolfe	York
Tanner Wolfe	York
Clarissah Woten	Omaha
<b>Kristi Berst, Facilitator</b>	<b>Nebraska Department of Education</b>

## COMMITTEE ON THE EDUCATION OF STUDENTS IN OUT OF HOME PLACEMENTS

Name	Representation	City
Brad Alexander	Douglas Co. Youth Center	Omaha
David Baisinger	Nebraska Youth Academy	Hastings
Carolyn Brown	Envisions of Norfolk	Norfolk
Dave Erb	Northeast Nebraska Juvenile Services, Inc.	Madison
Randy Farmer	Pathfinder Education Program YSC	Lincoln
Vicki Fehringer	Waverly Public Schools	Waverly
DeDe Frisch	South Sioux City Community Schools	So. Sioux City
Patrick Garcia	Epworth Village	York
Scott Gregory	Youth Treatment and Rehab Center	Geneva
Lori Griggs	State Juvenile Probation District #20	Lincoln
Susan Harder	NE Correctional Youth Facility	Omaha
<b>Kim Hawekotte, Chair</b>	NE Foster Care Review Office	Lincoln
Rosey Higgs	NE Children & Families Foundation	Omaha
Donna Hoffman	School Counselors, NDE	Lincoln
Sherri Kelley	PTI-Nebraska	Omaha
Amy Klein	Journeys Alternatives Academy	Omaha
Emily Kluver	NE Department of Health & Human Svcs	Lincoln
Steve Larsen	ScottsBluff Co. Juvenile Detention Center	Mitchell
James Larson	Papillion-LaVista Public Schools	Papillion
Dave Marsh	Lincoln Public Schools	Lincoln
Tanya Martin	Boys Town	Omaha
Mark Mason	Vocational Rehabilitation, NDE	Lincoln
Ryan O'Grady	Grand Island Public Schools	Grand Island
Kristi O'Meara	Lexington Public Schools	Lexington
Judge Linda Porter	Separate Juv. Court of Lancaster County	Lincoln
Dawn Rockey	CASA of Lancaster County	Lincoln
Steve Snodgrass	Ralston Public Schools	Ralston
<b>Michele Borg</b>	<b>Committee Facilitator</b>	<b>Douglas</b>
Pat Frost	NDE Title I Office	Lincoln

## RESPONSE TO INTERVENTION (RtI) COMMITTEE

Response to Intervention is a system of service delivery designed to provide effective instruction for all students using a comprehensive and preventive problem solving approach. It employs a tiered method of instructional delivery, in which the core curriculum addresses and meets the needs of most students (Tier 1). Additional instruction is provided for those needing supplementary support (Tier 2), and intensive and individualized services are provided for the students who continue to demonstrate more intensive needs (Tier 3). At its foundation, RtI includes measuring the performance of all students, and basing educational decisions regarding curriculum, instruction, and intervention intensity on student response to instruction. The Nebraska Department of Education and the University of Nebraska, working collaboratively, have established the RtI Consortium. The role of the RtI Consortium is to provide professional development and technical assistance to Nebraska schools in implementing Response to Intervention with fidelity. The RtI Consortium works with Nebraska school districts and educational service units in this endeavor.

<b>Name</b>	<b>Representation</b>	<b>City</b>
Julie Blazer	Hastings Public Schools	Hastings
Jane Byers	Papillion-LaVista Public Schools	Papillion
Lynne Elwood	Nebraska State Education Assoc.	Omaha
Cathy Fiala	ESU #8	Neligh
Kristi Gibbs	Ralston Public Schools	Ralston
Mary Kay Haun	Gering Public	Gering
Angie Luebbe	Columbus Public Schools	Columbus
Kyle McGowan	Crete Public Schools	Crete
Denise O'Brien	ESU #10	Kearney
Ellen Stokebrand	ESU #4	Auburn
Andrea Boden	RtI Consortium Proj. Mgr.	Lincoln
Lynette Block	RtI Consortium Proj. Mgr.	Lincoln
Todd Glover	UNL Asst. Professor	Lincoln
Tanya Ihlo	RtI Consortium Proj. Mgr.	Lincoln
Loretta Tabor	RtI Consortium Proj. Mgr.	Lincoln

<b>NDE Staff</b>	<b>Office</b>
<b>Rose Dymacek, Facilitator</b>	<b>Special Education</b>
Mary Duffy	High Ability Learners
Don Loseke	School Improvement
Katie Steenblock	Title I
Melody Hobson	Early Childhood
Mary Ann Losh	Staff Development
Tricia Parker	Reading/Writing-Curriculum
Beth Wierda	Special Education

## VISION STAKEHOLDER TEAM

Members of the Vision Stakeholder Team represent individuals, agencies and groups interested in the provision of educational and mobility services to students with visual impairments. Annually, the members review activities conducted by the Nebraska Center for the Education of Children Who Are Blind and Visually Impaired, including residential, education and outreach services across Nebraska.

Name	Representation	City
Jim Adams	NCECBVI*	Nebraska City
Cindy Barr-McNair	Millard Public Schools	Omaha
Jill Beckenhauer	NEAT Center	Cozad
Jorja Brazda-Witters	Omaha Public Schools	Omaha
Marg Dredla	Educational Service Unit #13	Scottsbluff
Karen Duffy	NCECBVI*	Nebraska City
Jon Fisher	Educational Service Unit #4	Auburn
Sherri Frisbie	Omaha Public Schools	Omaha
Audrey Graves	NCECBVI*	Nebraska Cit
Shelly Gray	Consumer	Omaha
Elissa Heibel	ESU #7	Albion
Tanya Hilligoss	Lincoln Public Schools	Lincoln
Jason Hippen	Nebraska City Public Schools	Nebraska City
Wendy Kemling	Scottsbluff Public Schools	Scottsbluff
Constance (Coni) Kersch	Educational Service Unit #8	O'Neill
Jean Loberg	Parent	Wayne
Barb Loos	Consumer	Lincoln
Tessa McCarthy	UNL	Lincoln
Jill McCaslin-Timmons	Lincoln Public Schools	Lincoln
<b>Norma Mercer</b>	<b>SEAC Representative</b>	<b>Beatrice</b>
Jane Moody	Educational Service Unit #11	Holdrege
Patti Neill	ATP	Cozad
Mary Robinson	Fremont Public Schools	Fremont
Leon Schiermeyer,	Region V	Nebraska City
Troy and Nancy Solsaa	Parents	Waverly
Pearl Van Zandt	NE Comm.-Blind and Visually Impaired	Lincoln
Cheryl Wichman	Parent	Nebraska City
Sharon Wordekemper	McCook Public Schools	McCook
<b>Teresa Coonts</b>	<b>Facilitator, NDE Special Education Office</b>	<b>Omaha</b>
<b>Sally Giittinger</b>	<b>Facilitator, NCECBVI*</b>	<b>Nebraska City</b>

\*Nebraska Center for the Education of Children Who Are Blind and Visually Impaired



## AUTISM SPECTRUM DISORDERS (ASD) COMMITTEE

The ASD Committee provides advice to NDE, the Special Education Advisory Council (SEAC), and the University of Nebraska (UNL) concerning the following:

- The ASD Network's role in teaching the delivery of appropriate services for children with autism spectrum disorders (ASD);
- The review of current pertinent research and information regarding methodologies and delivery systems for ASD;
- The review of all due process trends associated with children with ASD;
- Recommendations for ASD training of educators, parents and community; and
- Recommendations for ASD teaching competencies/standards.

Name	Representation	City
Keri Bennett	Vocational Rehabilitation	Kearney
Bethany Brunzman	Lincoln Public Schools	Lincoln
Rebecca Eckhardt	So. Sioux City Public Schools	So. Sioux City
Dr. Cindy Ellis	UNMC-MMI	Omaha
Rene Ferdinand	Autism Center of Nebraska	Omaha
Laura Maddox	Lincoln Public Schools Early Childhood	Lincoln
Nancy Meyer	ESU 6 Special Services	Milford
Brittney Phillips	Parent/HHS Family Services Specialist	Sidney
Larriane Polk	Special Education Director ESU #7	Columbus
Cara Small	ESU 6 Early Childhood Specialist	Milford
Lenette Sprunk	ESUs 5, 6 and 7 Assistive Tech Specialist	Columbus
Torri Tejral	Autism Leadership Academy Coordinator	Omaha
Tammy Voisin	Papillion-LaVista Public Schools	Papillion
Staff	Agency	City
<b>Teresa Coonts</b>	<b>Facilitator, NDE Special Education Office</b>	<b>Omaha</b>
Sonja Chatfield-Peetz	ASD Northeast Region Coordinator	Columbus
Kelly Anne Ergle	ASD Western Region Coordinator	Scottsbluff
Terri McGill	ASD Metro Region Coordinator	Omaha
Megan Misegadis	ASD Network Assistant/Parent	Lincoln
Dawna Sigurdson	ASD Central Region Coordinator	Kearney
Melissa Trautman	ASD Southeast Region Coordinator	Milford
<b>Annette Wragge</b>	<b>Facilitator, ASD Network Coordinator</b>	<b>Lincoln</b>

---

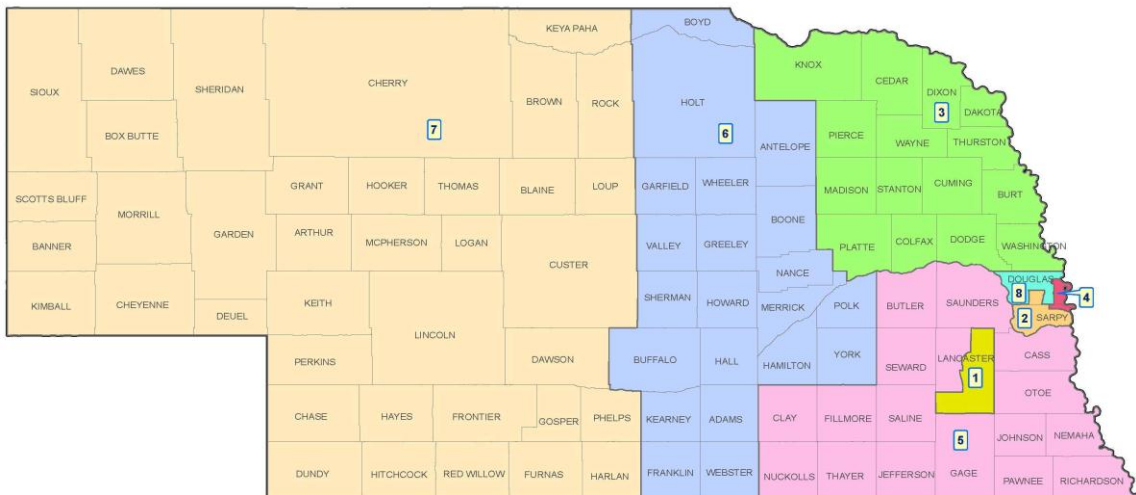


---

## NEBRASKA STATE BOARD OF EDUCATION

District	State Board Member
1	Lillie Larsen
2	Mark Quandahl, Vice President
3	Rachel Wise
4	Rebecca Valdez
5	Patricia Timm, President
6	Lynn Cronk
7	Molly O'Holleran
8	John Sieler
	Dr. Roger Breed, Commissioner of Education

### Nebraska State Board District Map



Funded By  
Nebraska Department of Education Part B Funds  
Grant H027A120079

Copies of this report and additional information regarding the  
Nebraska Department of Education's Special Education Office can be obtained at:  
<http://www.education.ne.gov/SPED/sped.html>

---



---